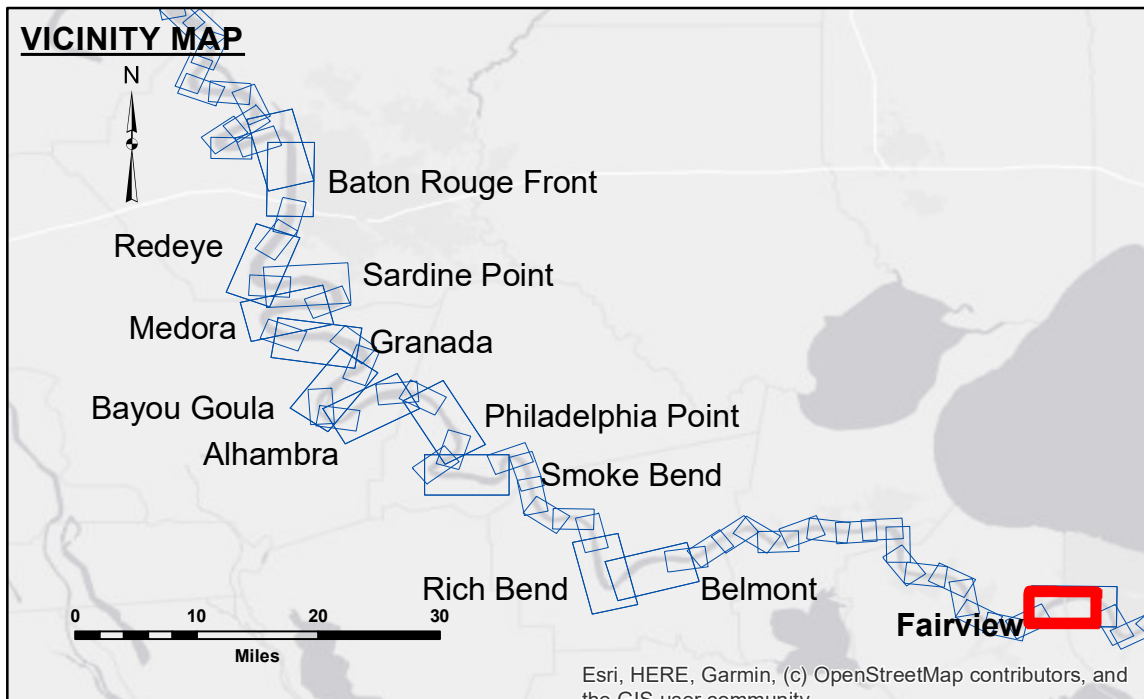


DISCLAIMER
 The information depicted on this map represents the results of a survey conducted by the U.S. Army Corps of Engineers. The user is responsible for the accuracy, completeness, and reliability of the data for their intended purpose. The user is not to be held liable for any damages or losses resulting from the use of this information. The U.S. Army Corps of Engineers does not warrant the accuracy or reliability of the information for any purpose other than that for which it was prepared. The user is advised to verify the information for their specific needs. The U.S. Army Corps of Engineers is not responsible for changes in the hydrographical conditions when developed after the date of the survey. The user is advised to consult the latest edition of the Hydrographic Survey Manual for more information. The U.S. Army Corps of Engineers is not responsible for the accuracy of the information for any purpose other than that for which it was prepared. The user is advised to verify the information for their specific needs. The U.S. Army Corps of Engineers is not responsible for changes in the hydrographical conditions when developed after the date of the survey. The user is advised to consult the latest edition of the Hydrographic Survey Manual for more information.

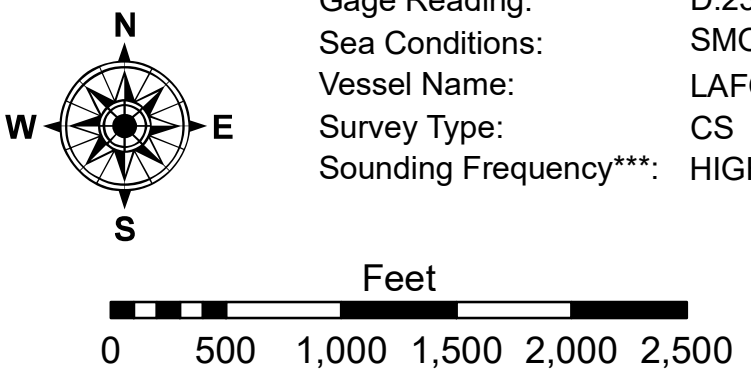
U.S. ARMY CORPS OF ENGINEERS NEW ORLEANS DISTRICT		
Submitted:	Surveyed By: D/S/S/PS	Plotted By: AO
Recommended:	Chief, Survey Section	Checked By: AC
Approved:	Chief, Waterways Maintenance Section	

**MISSISSIPPI RIVER - B. R. TO GULF
 FAIRVIEW CROSSING
 MD_48_FRV_20190806_CS
 06 August 2019**



LEGEND		Borrow Area		Depth Contours	
--- Federal Navigation Channel	○ Cable Area	□ Borrow Area	■ 0' and above	■ 0' to -5'	■ -5' to -10'
— Federal Navigation Center Line	□ Placement Area	● Shoalest Sounding**	■ -10' to -20'	■ -10' to -20'	■ -20' to -30'
— As-built Pipeline/Cable	□ Anchorage Area	★ Beacon, General	■ -20' to -30'	■ -20' to -30'	■ -30' to -35'
..... Unconfirmed Pipeline/Cable	⊗ Obstruction Point	◆ Red Navigation Buoy	■ -30' to -35'	■ -30' to -35'	■ -35' to -40'
— Project Depth Contour	⚓ Wrecks-Submerged	◆ Green Navigation Buoy	■ -35' to -40'	■ -35' to -40'	■ -40' to 45'
			■ -40' to 45'	■ -40' to 45'	■ -45' and below

NOTES:
 Horizontal Coordinate System:
 North American Datum of 1983 (NAD83), projected to the State Plane Coordinate System (SPCS), Louisiana South Zone. Distance units in U.S. Survey Feet.
 Vertical Datum:
 Soundings are shown in feet and indicate depths below Low Water Reference Plane 2007 (NAVD).
 Distances on the Mississippi River, above and below Head of Passes are shown at 1 mile intervals.
 The location of navigation aids are based on and provided by the U.S. Coast Guard and USACE crew.
 2015 Aerial Photography data source: NAIP, USDA-FSA-APFO Aerial Photography Field Office.
 Reference is N.O.A. Navigation Chart No. 11370.
 ** Shoalest Sounding per Quarter per Reach.
 *** High frequency (200 kHz) survey data represents the first signal return at a sounding location and will include suspended solids, known as "fluff", if present. Low frequency (20 kHz) survey data normally penetrates through this "fluff" layer to depict elevations of consolidated bottom material. Low frequency accuracies may vary depending on channel conditions and fathometer settings.



**Sheet Reference Number
 48 of 97**

Revision Number:
 4-10-2019/012