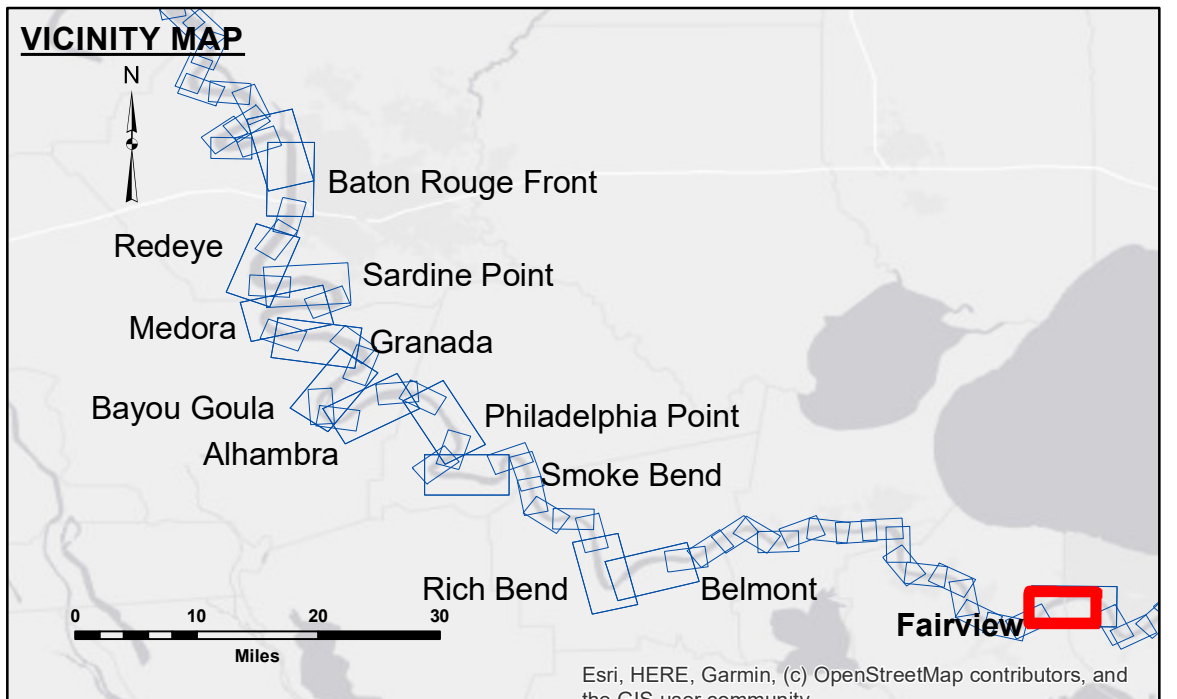


DISCLAIMER
 The information depicted on this map represents the results of a survey conducted by the U.S. Army Corps of Engineers. The user is responsible for the accuracy, completeness, and reliability of the data for their intended purpose. The user is not to be held liable for any damages or losses resulting from the use of this information. The U.S. Army Corps of Engineers does not warrant the accuracy or reliability of the data for any purpose other than that for which it was collected. The user is advised to verify the data for their intended purpose. The information depicted on this map represents the results of a survey conducted by the U.S. Army Corps of Engineers. The user is responsible for the accuracy, completeness, and reliability of the data for their intended purpose. The user is not to be held liable for any damages or losses resulting from the use of this information. The U.S. Army Corps of Engineers does not warrant the accuracy or reliability of the data for any purpose other than that for which it was collected. The user is advised to verify the data for their intended purpose.

U.S. ARMY CORPS OF ENGINEERS NEW ORLEANS DISTRICT		
Submitted:	Surveyed By: RYLAND/SOUKI	Plotted By: BD
Recommended:	Chief, Survey Section	Checked By: AC
Approved:	Chief, Waterways Maintenance Section	

**MISSISSIPPI RIVER - B. R. TO GULF
 FAIRVIEW CROSSING
 MD_48_FRV_20190822_CS
 22 August 2019**



LEGEND		Borrow Area		Sounding	
--- Federal Navigation Channel	○ Cable Area	□ Borrow Area	■ 0' and above	■ 0' to -5'	■ -5' to -10'
— Federal Navigation Center Line	□ Placement Area	● Shoalest Sounding**	■ -10' to -20'	■ -20' to -30'	■ -30' to -35'
— As-built Pipeline/Cable	□ Anchorage Area	★ Beacon, General	■ -35' to -40'	■ -40' to -45'	■ -45' and below
..... Unconfirmed Pipeline/Cable	⊗ Obstruction Point	◆ Red Navigation Buoy			
— Project Depth Contour	⚓ Wrecks-Submerged	◆ Green Navigation Buoy			

NOTES:
 Horizontal Coordinate System:
 North American Datum of 1983 (NAD83), projected to the State Plane Coordinate System (SPCS), Louisiana South Zone. Distance units in U.S. Survey Feet.
 Vertical Datum:
 Soundings are shown in feet and indicate depths below Low Water Reference Plane 2007 (NAVD).
 Distances on the Mississippi River, above and below Head of Passes are shown at 1 mile intervals.
 The location of navigation aids are based on and provided by the U.S. Coast Guard and USACE crew.
 2015 Aerial Photography data source: NAIP, USDA-FSA-APFO Aerial Photography Field Office.
 Reference is N.O.A. Navigation Chart No. 11370.
 ** Shoalest Sounding per Quarter per Reach.
 *** High frequency (200 kHz) survey data represents the first signal return at a sounding location and will include suspended solids, known as "fluff", if present. Low frequency (20 kHz) survey data normally penetrates through this "fluff" layer to depict elevations of consolidated bottom material. Low frequency accuracies may vary depending on channel conditions and fathometer settings.

LWRP: 0.7
 Gage Reading: R:8.6 NO:6.0 USED:6.90 NAVD
 Sea Conditions: CALM
 Vessel Name: OB-189
 Survey Type: CONDITION
 Sounding Frequency***: HIGH

0 500 1,000 1,500 2,000 2,500 Feet

**Sheet Reference Number
 48 of 97**

Revision Number:
 4-10-2019/012