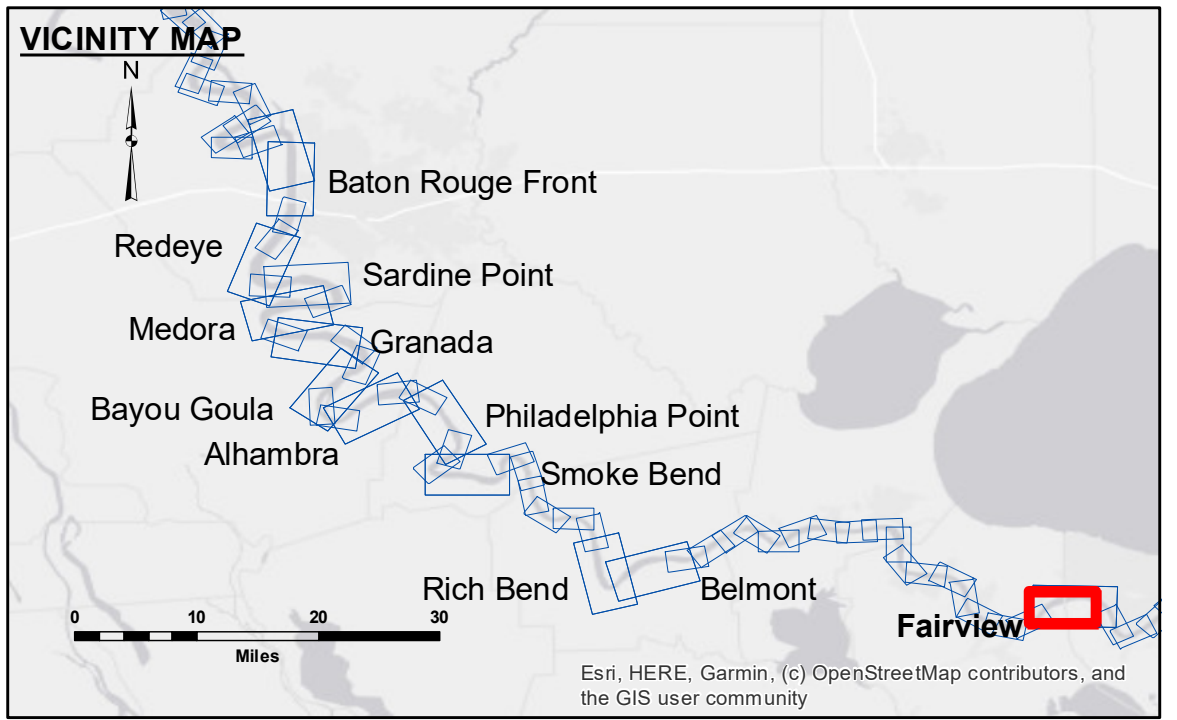


DISCLAIMER
 The United States Government furnishes these data and the recipient accepts and uses them with the express understanding that the Government makes no warranty, either expressed or implied, concerning the accuracy, completeness, reliability, usability or suitability for any particular purpose of the data. The user is responsible for the results of the application of the data for other than its intended purpose. The information depicted on this map represents the results of a survey conducted on the date of the survey and is not intended to represent the general condition existing at that time. The information depicted on this map represents the results of a survey conducted on the date of the survey and is not intended to represent the general condition existing at that time. The information depicted on this map represents the results of a survey conducted on the date of the survey and is not intended to represent the general condition existing at that time.

U.S. ARMY CORPS OF ENGINEERS NEW ORLEANS DISTRICT		
Submitted:	Surveyed By: SPDS	Plotted By: BD
Recommended: Chief Survey Section	Checked By: AC	Approved: Chief Waterways Maintenance Section

**MISSISSIPPI RIVER - B.R. TO GULF
 FAIRVIEW CROSSING
 MD_48_FRV_20191024_CS
 24 October 2019**

**Sheet
 Reference
 Number
 48 of 97**



LEGEND	
--- Federal Navigation Channel	● Cable Area
— Federal Navigation Center Line	■ Placement Area
— As-built Pipeline/Cable	□ Anchorage Area
..... Unconfirmed Pipeline/Cable	⊗ Obstruction Point
— Project Depth Contour	★ Wrecks-Submerged
□ Borrow Area	★ Beacon, General
● Shoalest Sounding**	◆ Red Navigation Buoy
◆ Green Navigation Buoy	

0' and above	0.7
0' to -5'	D:12.6 NO:6.5 USED:7.6 NAVD
-5' to -10'	CHOPPY
-10' to -20'	OB-189
-20' to -30'	CONDITION
-30' to -35'	
-35' to -40'	
-40' to -45'	
-45' and below	

NOTES:
 Horizontal Coordinate System:
 North American Datum of 1983 (NAD83), projected to the State Plane
 Coordinate System (SPCS), Louisiana South Zone. Distance units in U.S. Survey Feet.
 Vertical Datum:
 Soundings are shown in feet and indicate depths below Low Water Reference Plane 2007 (NAVD).
 Distances on the Mississippi River, above and below Head of Passes are shown
 at 1 mile intervals.
 The location of navigation aids are base on and provided by the U.S. Coast Guard and USACE crew.
 2015 Aerial Photography data source: NAIP, USDA-FSA-APFO Aerial Photography Field Office.
 Reference is N.O.A. Navigation Chart No. 11370.
 ** Shoalest Sounding per Quarter per Reach.
 *** High frequency (200 kHz) survey data represents the first signal return at a sounding
 location and will include suspended solids, known as "fluff", if present. Low frequency (20 kHz)
 survey data normally penetrates through this "fluff" layer to depict elevations of consolidated bottom
 material. Low frequency accuracies may vary depending on channel conditions and fathometer
 settings.

