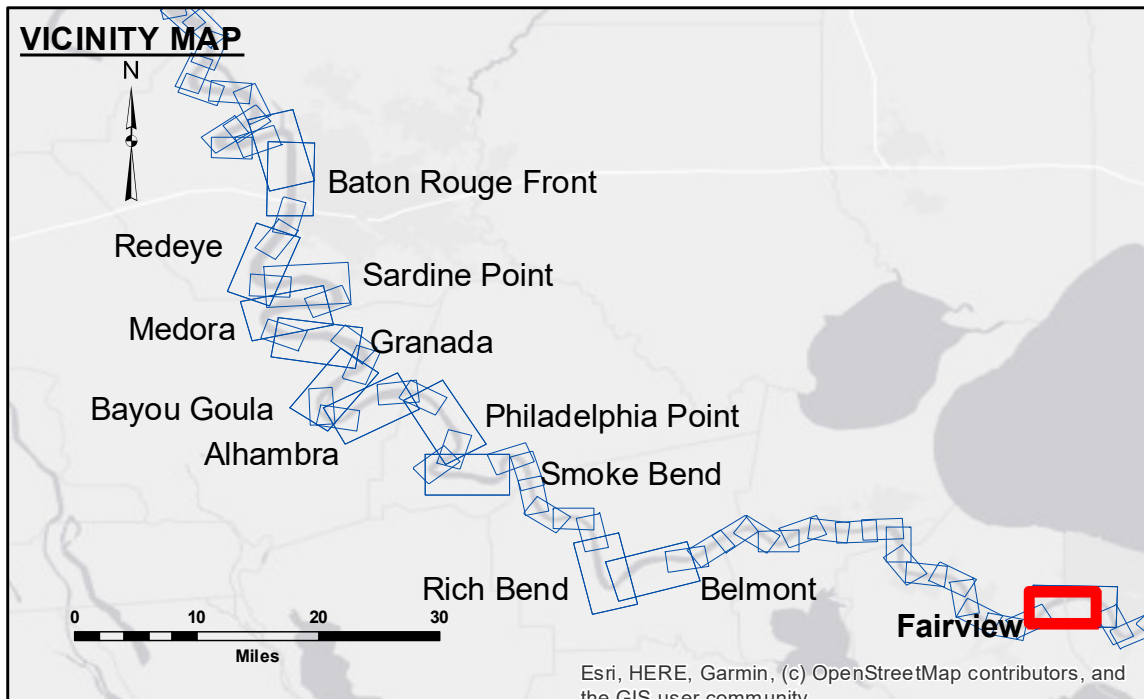


DISCLAIMER
 The United States Government furnishes these data and the recipient accepts and uses them with the express understanding that the Government makes no warranty, either expressed or implied, concerning the accuracy, completeness, reliability, usability or suitability for any particular purpose of the information. The recipient shall be responsible for the results of any use of the information. The recipient shall not be held liable for any damage or injury resulting from the use of the information. The recipient shall not be held liable for any damage or injury resulting from the use of the information. The recipient shall not be held liable for any damage or injury resulting from the use of the information.

U.S. ARMY CORPS OF ENGINEERS NEW ORLEANS DISTRICT		
Submitted:	Surveyed By: SP-JH	Plotted By: BD
Recommended: Chief Survey Section	Checked By: AC	Approved: Chief Waterways Maintenance Section

**MISSISSIPPI RIVER - B.R. TO GULF
 FAIRVIEW CROSSING
 MD_48_FRV_20200109_CS
 09 January 2020**

**Sheet
 Reference
 Number
 48 of 97**



LEGEND		SOUNDING DEPTHS	
--- Federal Navigation Channel	○ Cable Area	Green	0' and above
— Federal Navigation Center Line	□ Placement Area	Yellow	0' to -5'
— As-built Pipeline/Cable	□ Anchorage Area	Orange	-5' to -10'
..... Unconfirmed Pipeline/Cable	⊗ Obstruction Point	Light Blue	-10' to -20'
— Project Depth Contour	★ Beacon, General	Blue	-20' to -30'
	◆ Red Navigation Buoy	Dark Blue	-30' to -35'
	◆ Green Navigation Buoy	Pink	-35' to -40'
	◆ Wrecks-Submerged	White	-40' to 45'
			-45' and below

NOTES:
 Horizontal Coordinate System:
 North American Datum of 1983 (NAD83), projected to the State Plane
 Coordinate System (SPCS), Louisiana South Zone. Distance units in U.S. Survey Feet.
 Vertical Datum:
 Soundings are shown in feet and indicate depths below Low Water Reference Plane 2007 (NAVD).
 Distances on the Mississippi River, above and below Head of Passes are shown
 at 1 mile intervals.
 The location of navigation aids are base on and provided by the U.S. Coast Guard and USACE crew.
 2015 Aerial Photography data source: NAIP, USDA-FSA-APFO Aerial Photography Field Office.
 Reference is N.O.A. Navigation Chart No. 11370.
 ** Shoalest Sounding per Quarter per Reach.
 *** High frequency (200 kHz) survey data represents the first signal return at a sounding
 location and will include suspended solids, known as "fluff", if present. Low frequency (20 kHz)
 survey data normally penetrates through this "fluff" layer to depict elevations of consolidated bottom
 material. Low frequency accuracies may vary depending on channel conditions and fathometer
 settings.

