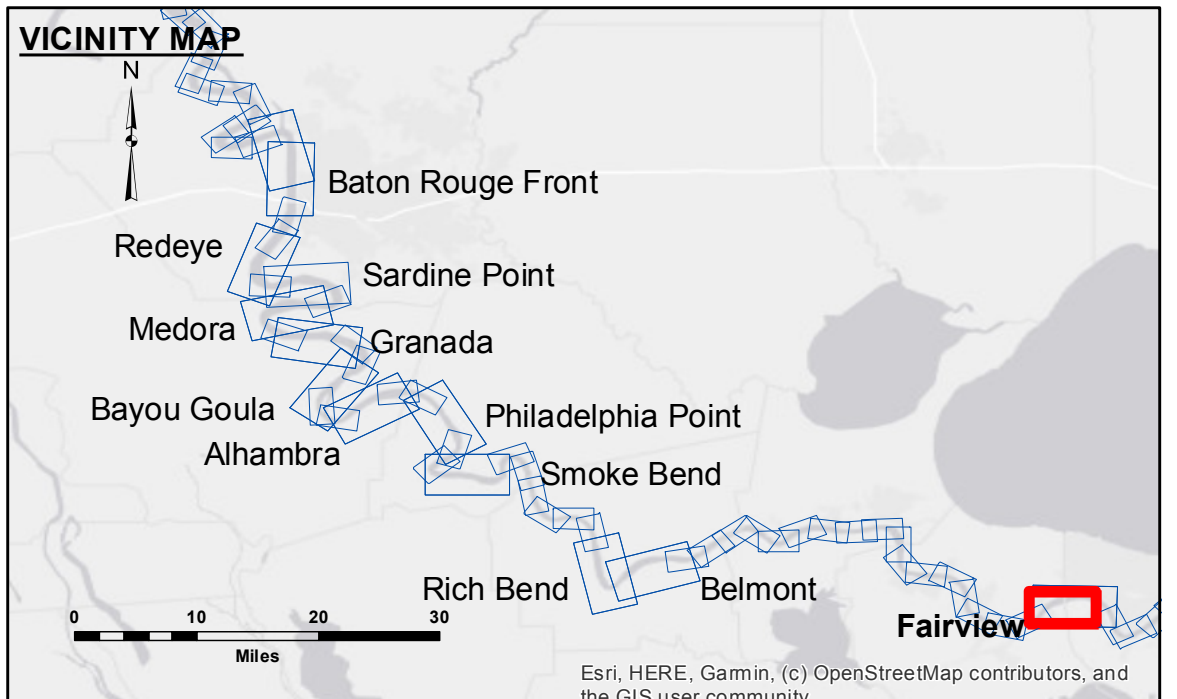


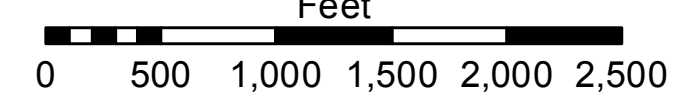
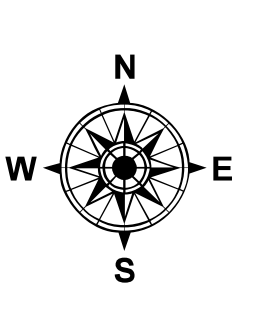
Accession: The United States Government furnishes these data and the recipient accepts and uses them with the express understanding that they are not to be used for any purpose other than that for which they were prepared. The user is responsible for the results of their use. The application of the data for other than its intended purpose is at the user's risk. The user is responsible for the results of their use. The application of the data for other than its intended purpose is at the user's risk. The user is responsible for the results of their use. The application of the data for other than its intended purpose is at the user's risk. The user is responsible for the results of their use.

U.S. ARMY CORPS OF ENGINEERS NEW ORLEANS DISTRICT		
Submitted:	Surveyed By: SPPM	Plotted By: BD
Recommended:	Checked By: AC	Checked By: AC
Approved:	Other Waterways Maintenance Section	

**MISSISSIPPI RIVER - B. R. TO GULF
FAIRVIEW CROSSING
MD_48_FRV_20200520_CS
20 May 2020**



LEGEND			
	Federal Navigation Channel		0' and above
	Federal Navigation Center Line		0' to -5'
	As-built Pipeline/Cable		-5' to -10'
	Unconfirmed Pipeline/Cable		-10' to -20'
	Project Depth Contour		-20' to -30'
	Cable Area		-30' to -35'
	Placement Area		-35' to -40'
	Anchorage Area		-40' to 45'
	Obstruction Point		-45' and below
	Wrecks-Submerged		Borrow Area
			Shoalest Sounding**
			Beacon, General
			Red Navigation Buoy
			Green Navigation Buoy



LWRP: 0.7
 Gage Reading: R: 19.2 NO: 13.4 USED: 15.5 NAVD
 Sea Conditions: CALM
 Vessel Name: OB-167
 Survey Type: CONDITION
 Sounding Frequency***: HIGH

NOTES:
 Horizontal Coordinate System:
 North American Datum of 1983 (NAD83), projected to the State Plane Coordinate System (SPCS), Louisiana South Zone. Distance units in U.S. Survey Feet.
 Vertical Datum:
 Soundings are shown in feet and indicate depths below Low Water Reference Plane 2007 (NAVD).
 Distances on the Mississippi River, above and below Head of Passes are shown at 1 mile intervals.
 The location of navigation aids are based on and provided by the U.S. Coast Guard and USACE crew.
 2015 Aerial Photography data source: NAIP, USDA-FSA-APFO Aerial Photography Field Office.
 Reference is N.O.A.A. Navigation Chart No. 11370.
 ** Shoalest Sounding per Quarter per Reach.
 *** High frequency (200 kHz) survey data represents the first signal return at a sounding location and will include suspended solids, known as "fluff", if present. Low frequency (20 kHz) survey data normally penetrates through this "fluff" layer to depict elevations of consolidated bottom material. Low frequency accuracies may vary depending on channel conditions and bathymeter settings.

**Sheet
Reference
Number
48 of 97**