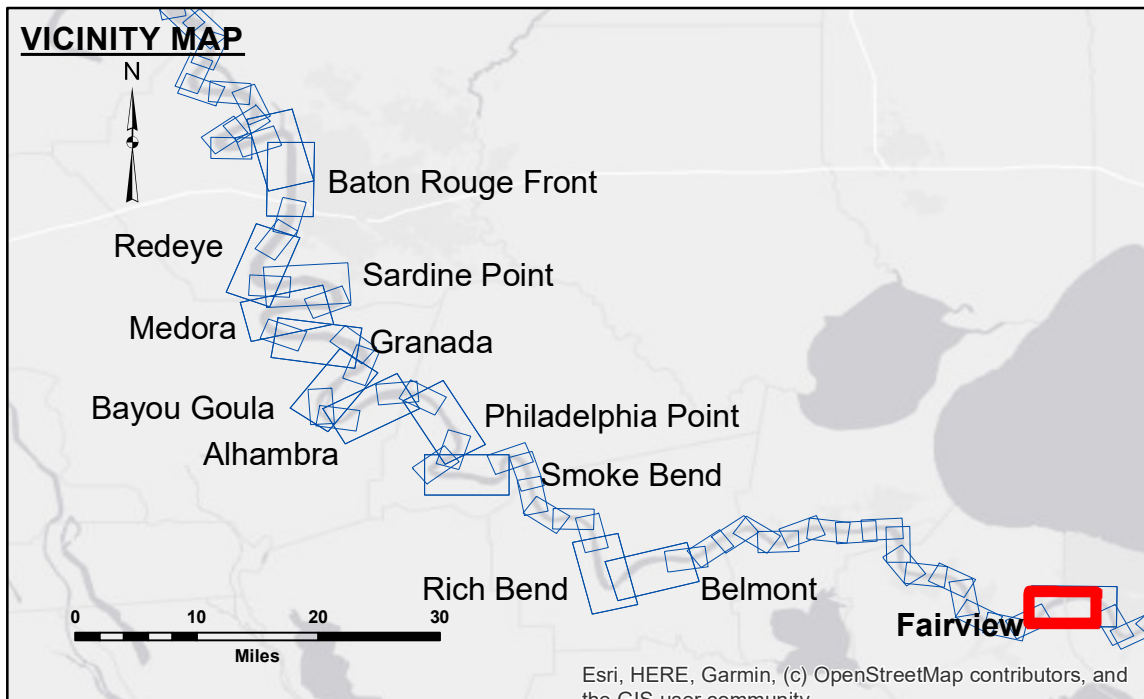


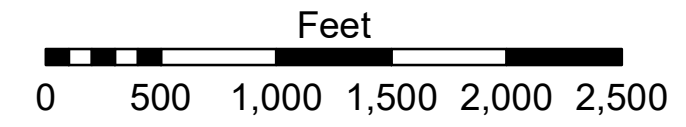
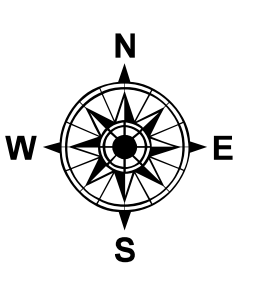
DISCLAIMER
 The information depicted on this map represents the results of a survey conducted by the U.S. Army Corps of Engineers. It is not intended to be used for any purpose other than that for which it was prepared. The user is responsible for the accuracy, completeness, and reliability of the information for any particular purpose of the user. The U.S. Army Corps of Engineers does not warrant, represent, or guarantee the accuracy, completeness, or reliability of the information for any purpose other than that for which it was prepared. The user is responsible for the accuracy, completeness, and reliability of the information for any particular purpose of the user. The U.S. Army Corps of Engineers does not warrant, represent, or guarantee the accuracy, completeness, or reliability of the information for any purpose other than that for which it was prepared. The user is responsible for the accuracy, completeness, and reliability of the information for any particular purpose of the user.

U.S. ARMY CORPS OF ENGINEERS NEW ORLEANS DISTRICT		
Submitted:	Surveyed By: RYLAND/HOSHMAN	Plotted By: AO
Recommended:	Chief, Survey Section	Checked By: AC
Approved:	Chief, Waterways Maintenance Section	

**MISSISSIPPI RIVER - B. R. TO GULF
 FAIRVIEW CROSSING
 MD_48_FRV_20201117_CS
 17 November 2020**



LEGEND		Depth Contours	
--- Federal Navigation Channel	○ Cable Area	Green	0' and above
— Federal Navigation Center Line	□ Placement Area	Yellow	0' to -5'
— As-built Pipeline/Cable	□ Anchorage Area	Light Green	-5' to -10'
..... Unconfirmed Pipeline/Cable	⊗ Obstruction Point	Light Blue	-10' to -20'
— Project Depth Contour	★ Beacon, General	Blue	-20' to -30'
	◆ Red Navigation Buoy	Dark Blue	-30' to -35'
	◆ Green Navigation Buoy	Purple	-35' to -40'
	◆ Wrecks-Submerged	Pink	-40' to 45'
		White	-45' and below
		Blue	Borrow Area
		Yellow	Shoalest Sounding**



LWRP: 0.7
 Gage Reading: R:5.8NO:3.2 USED: 4.2 N
 Sea Conditions: CALM
 Vessel Name: M/V OB 189
 Survey Type: SURVEY_TYPE
 Sounding Frequency***: SOUNDING_FREQUENCY

NOTES:
 Horizontal Coordinate System:
 North American Datum of 1983 (NAD83), projected to the State Plane Coordinate System (SPCS), Louisiana South Zone. Distance units in U.S. Survey Feet.
 Vertical Datum:
 Soundings are shown in feet and indicate depths below Low Water Reference Plane 2007 (NAVD).
 Distances on the Mississippi River, above and below Head of Passes are shown at 1 mile intervals.
 The location of navigation aids are based on and provided by the U.S. Coast Guard and USACE crew.
 2015 Aerial Photography data source: NAIP, USDA-FSA-APFO Aerial Photography Field Office.
 Reference is N.O.A. Navigation Chart No. 11370.
 ** Shoalest Sounding per Quarter per Reach.
 *** High frequency (200 kHz) survey data represents the first signal return at a sounding location and will include suspended solids, known as "fluff", if present. Low frequency (20 kHz) survey data normally penetrates through this "fluff" layer to depict elevations of consolidated bottom material. Low frequency accuracies may vary depending on channel conditions and fathometer settings.

**Sheet Reference Number
 48 of 97**