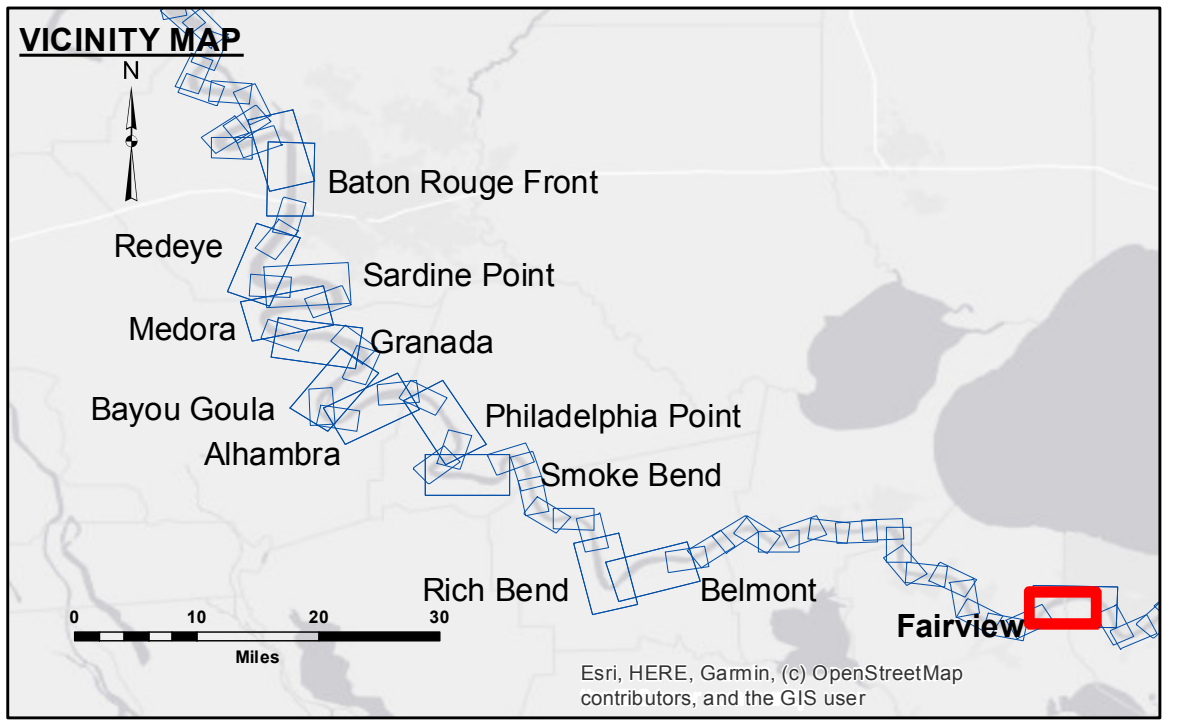


DISCLAIMER: The United States Government furnishes these data and the recipient accepts and uses them with the express understanding that the data are not warranted for any purpose other than that for which they were prepared. The user is responsible for the results of any use of the data for other than its intended purpose. The application of the data for other than its intended purpose may result in injury or damage to persons or property. The information depicted on this map represents the results of a survey conducted on the ground and is not to be used for any purpose other than that for which it was prepared. The information depicted on this map represents the results of a survey conducted on the ground and is not to be used for any purpose other than that for which it was prepared.

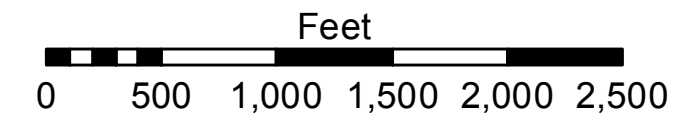
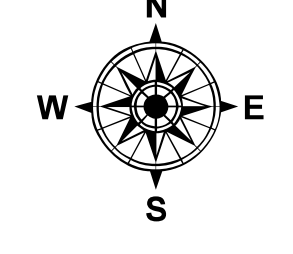
U.S. ARMY CORPS OF ENGINEERS NEW ORLEANS DISTRICT		
Submitted:	Surveyed By: DS/JA	Plotted By: BD
Recommended:	Chief, Survey Section	Checked By: AC
Approved:	Chief, Waterways Maintenance Section	

**MISSISSIPPI RIVER - B.R. TO GULF
FAIRVIEW CROSSING
MD_48_FRV_20210309_CS
09 March 2021**



LEGEND	
--- Federal Navigation Channel	○ Cable Area
— Federal Navigation Center Line	□ Placement Area
— As-built Pipeline/Cable	□ Anchorage Area
..... Unconfirmed Pipeline/Cable	⊗ Obstruction Point
— Project Depth Contour	★ Wrecks-Submerged
□ Borrow Area	★ Beacon, General
● Shoalest Sounding**	◆ Red Navigation Buoy
◆ Green Navigation Buoy	

0' and above	0' to -5'
-5' to -10'	-10' to -20'
-20' to -30'	-30' to -35'
-35' to -40'	-40' to -45'
-45' and below	



LWRP: =0.7
 Gage Reading: BR:29.5 D:19.8 USED:11.6 NAVD
 Sea Conditions: CALM
 Vessel Name: M/V VALENTOUR
 Survey Type: CS
 Sounding Frequency***: HIGH

NOTES:
 Horizontal Coordinate System:
 North American Datum of 1983 (NAD83), projected to the State Plane
 Coordinate System (SPCS), Louisiana South Zone. Distance units in U.S. Survey Feet.
 Vertical Datum:
 Soundings are shown in feet and indicate depths below Low Water Reference Plane 2007 (NAVD).
 Distances on the Mississippi River, above and below Head of Passes are shown
 at 1 mile intervals.
 The location of navigation aids are base on and provided by the U.S. Coast Guard and USACE crew.
 2015 Aerial Photography data source: NAIP, USDA-FSA-APFO Aerial Photography Field Office.
 Reference is N.O.A.A. Navigation Chart No. 11370.
 ** Shoalest Sounding per Quarter per Reach.
 *** High frequency (200 kHz) survey data represents the first signal return at a sounding
 location and will include suspended solids, known as "fluff", if present. Low frequency (20 kHz)
 survey data normally penetrates through this "fluff" layer to depict elevations of consolidated bottom
 material. Low frequency accuracies may vary depending on channel conditions and fathometer
 settings.

**Sheet
Reference
Number
48 of 97**