

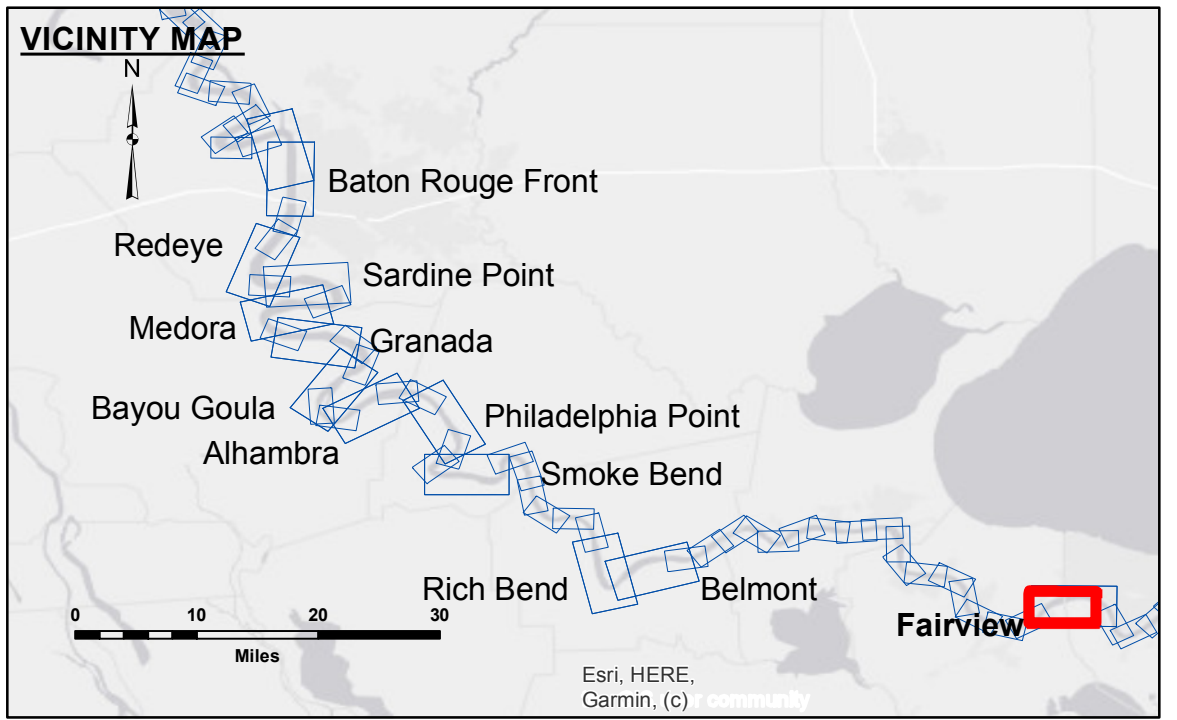
Access Constraints: The United States Government furnishes these data and the recipient accepts and uses them with the express understanding that they are not to be used for any purpose other than that for which they were prepared, or implied concerning the accuracy, completeness, readability, usability or suitability for any particular purpose of the recipient. The user is responsible for the results obtained from the use of these data for other than its intended purpose. The application of the data for other than its intended purpose is at the user's risk.

Distribution Liability: The data represents the results of data collection/processing for a specific US Army Corps of Engineers project. The data is not to be used for any purpose other than that for which it was prepared. The user is responsible for the results obtained from the use of these data for other than its intended purpose. The application of the data for other than its intended purpose is at the user's risk.

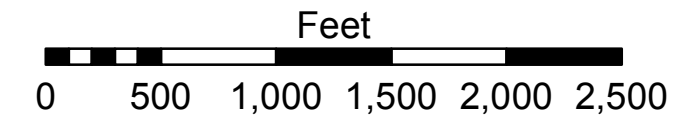
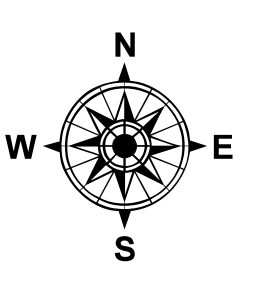
Data Constants: Hydrographic survey data is subject to change rapidly due to several factors including but not limited to changing hydrographic conditions, changes in bathymetry, and changes in the hydrographic conditions which develop after the date of the survey. The data is not to be used for any purpose other than that for which it was prepared. The user is responsible for the results obtained from the use of these data for other than its intended purpose. The application of the data for other than its intended purpose is at the user's risk.

U.S. ARMY CORPS OF ENGINEERS NEW ORLEANS DISTRICT		
Submitted:	Surveyed By: RYLAND/SIMMONS	Plotted By: JH
Recommended:	Chief, Survey Section	Checked By: JH
Approved:	Chief, Waterways Maintenance Section	

**MISSISSIPPI RIVER - B.R. TO GULF
FAIRVIEW CROSSING
MD_48_FRV_20220623_CS
23 June 2022**



LEGEND		Borrow Area		Sounding	
--- Federal Navigation Channel	○ Cable Area	□ Borrow Area	0' and above	0' to -5'	0.7
— Federal Navigation Center Line	□ Placement Area	● Shoalest Sounding**	-5' to -10'	-5' to -10'	R:12.4 NO:7.9 USED: 9.50 NAVD
— As-built Pipeline/Cable	□ Anchorage Area	☆ Beacon, General	-10' to -20'	-10' to -20'	Sea Conditions: CALM
..... Unconfirmed Pipeline/Cable	⊗ Obstruction Point	◆ Red Navigation Buoy	-20' to -30'	-20' to -30'	Vessel Name: M/V OB 167
— Project Depth Contour	⚓ Wrecks-Submerged	◆ Green Navigation Buoy	-30' to -35'	-30' to -35'	Survey Type: CONDITION
			-35' to -40'	-35' to -40'	Sounding Frequency***: HIGH
			-40' to -45'	-40' to -45'	
			-45' to -50'	-45' to -50'	
			-50' and below	-50' and below	



NOTES:

Horizontal Coordinate System:
North American Datum of 1983 (NAD83), projected to the State Plane Coordinate System (SPCS), Louisiana South Zone. Distance units in U.S. Survey Feet.

Vertical Datum:
Soundings are shown in feet and indicate depths below Low Water Reference Plane 2007 (NAVD).

Distances on the Mississippi River, above and below Head of Passes are shown at 1 mile intervals.

The location of navigation aids are based on and provided by the U.S. Coast Guard and USACE crew.

2015 Aerial Photography data source: NAIP, USDA-FSA-APFO Aerial Photography Field Office.

Reference is N.O.A. Navigation Chart No. 11370.

** Shoalest Sounding per Quarter per Reach.

*** High frequency (200 kHz) survey data represents the first signal return at a sounding location and will include suspended solids, known as "fluff", if present. Low frequency (20 kHz) survey data normally penetrates through this "fluff" layer to depict elevations of consolidated bottom material. Low frequency accuracies may vary depending on channel conditions and fathometer settings.

**Sheet Reference Number
48 of 97**