



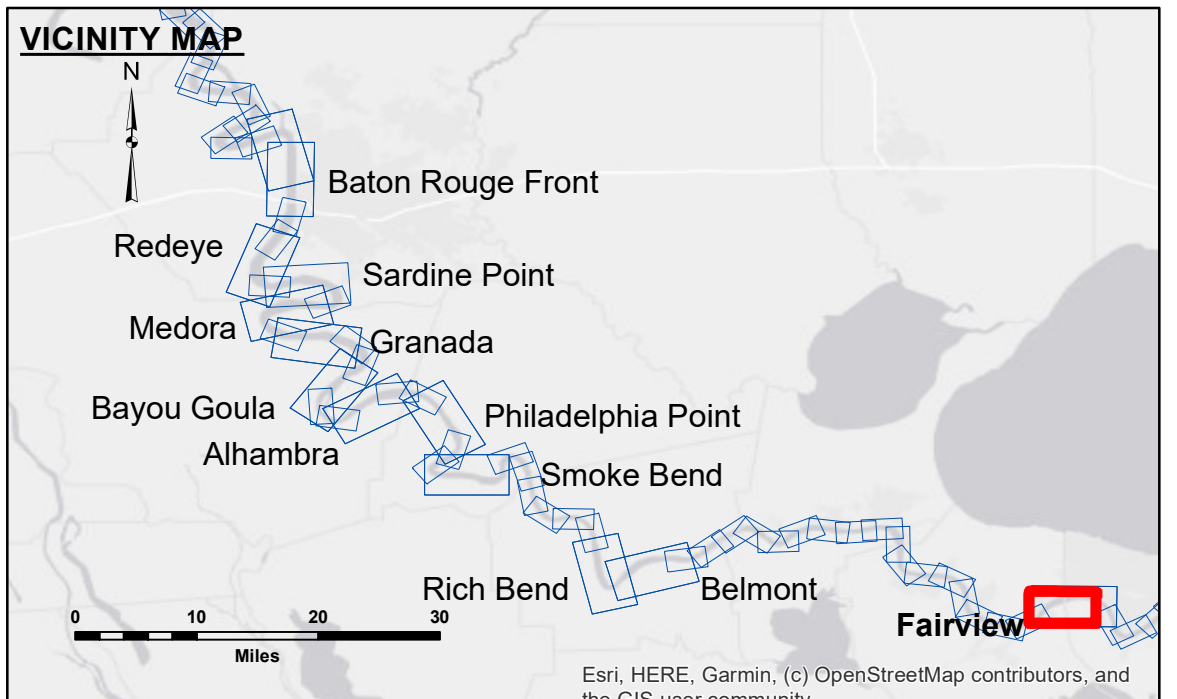
Access/Concurrence: The United States Government (USG) makes these data and the recipient accepts and uses them with the express understanding that the USG does not warrant, represent, or guarantee the accuracy, reliability, usability, or suitability for any particular purpose of the information. The user is responsible for the results of the application of the information for other than its intended purpose.

Access/Concurrence: The United States Government (USG) makes these data and the recipient accepts and uses them with the express understanding that the USG does not warrant, represent, or guarantee the accuracy, reliability, usability, or suitability for any particular purpose of the information. The user is responsible for the results of the application of the information for other than its intended purpose.

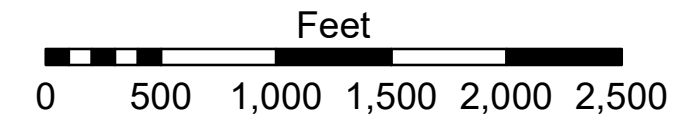
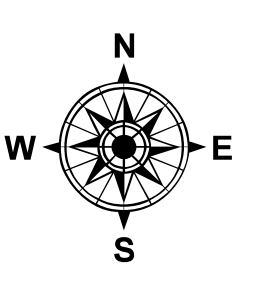
Access/Concurrence: The United States Government (USG) makes these data and the recipient accepts and uses them with the express understanding that the USG does not warrant, represent, or guarantee the accuracy, reliability, usability, or suitability for any particular purpose of the information. The user is responsible for the results of the application of the information for other than its intended purpose.

U.S. ARMY CORPS OF ENGINEERS NEW ORLEANS DISTRICT		
Submitted:	Surveyed By: RYLAND/RHODEN	Plotted By: JH
Recommended:	Chief, Survey Section	Checked By: JH
Approved:	Chief, Waterways Maintenance Section	

**MISSISSIPPI RIVER - B. R. TO GULF
FAIRVIEW CROSSING
MD_48_FRV_20220725_CS
25 July 2022**



LEGEND		LEGEND		LEGEND	
--- Federal Navigation Channel	○ Cable Area	□ Borrow Area	■ 0' and above	☆ Beacon, General	○ 0' to -5'
— Federal Navigation Center Line	□ Placement Area	● Shoalest Sounding**	■ -5' to -10'	◆ Red Navigation Buoy	○ -5' to -10'
— As-built Pipeline/Cable	□ Anchorage Area	☆ Beacon, General	■ -10' to -20'	◆ Green Navigation Buoy	○ -10' to -20'
..... Unconfirmed Pipeline/Cable	⊗ Obstruction Point	◆ Red Navigation Buoy	■ -20' to -30'		○ -20' to -30'
— Project Depth Contour	⚓ Wrecks-Submerged	◆ Green Navigation Buoy	■ -30' to -35'		○ -30' to -35'
			■ -35' to -40'		○ -35' to -40'
			■ -40' to 45'		○ -40' to 45'
			■ -45' to 50'		○ -45' to 50'
			■ -50' and below		○ -50' and below



LWRP: 0.7
 Gage Reading: R:4.4 NO:2.9 USED: 3.40 NAVD
 Sea Conditions: CALM
 Vessel Name: M/V OB 169
 Survey Type: CONDITION
 Sounding Frequency***: HIGH

NOTES:

Horizontal Coordinate System:
 North American Datum of 1983 (NAD83), projected to the State Plane Coordinate System (SPCS), Louisiana South Zone. Distance units in U.S. Survey Feet.

Vertical Datum:
 Soundings are shown in feet and indicate depths below Low Water Reference Plane 2007 (NAVD).

Distances on the Mississippi River, above and below Head of Passes are shown at 1 mile intervals.

The location of navigation aids are based on and provided by the U.S. Coast Guard and USACE crew.

2015 Aerial Photography data source: NAIP, USDA-FSA-APFO Aerial Photography Field Office.

Reference is N.O.A. Navigation Chart No. 11370.

** Shoalest Sounding per Quarter per Reach.

*** High frequency (200 kHz) survey data represents the first signal return at a sounding location and will include suspended solids, known as "fluff", if present. Low frequency (20 kHz) survey data normally penetrates through this "fluff" layer to depict elevations of consolidated bottom material. Low frequency accuracies may vary depending on channel conditions and fathometer settings.

**Sheet Reference Number
48 of 97**

Revision Number:
4.2-20200420