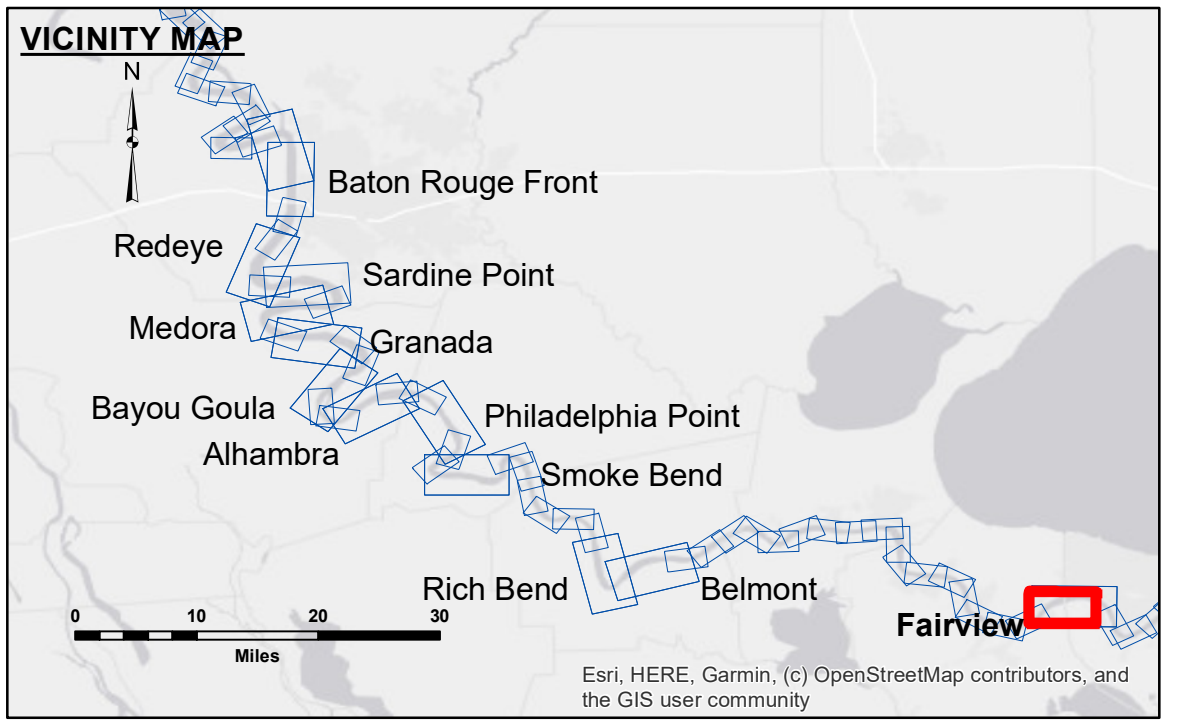


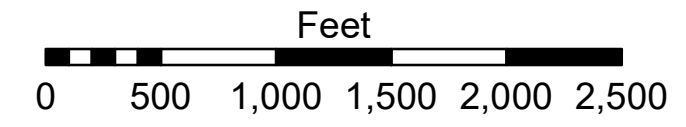
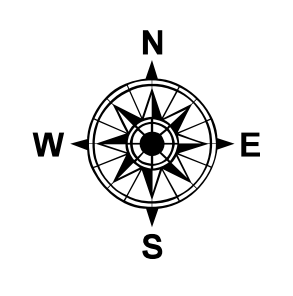
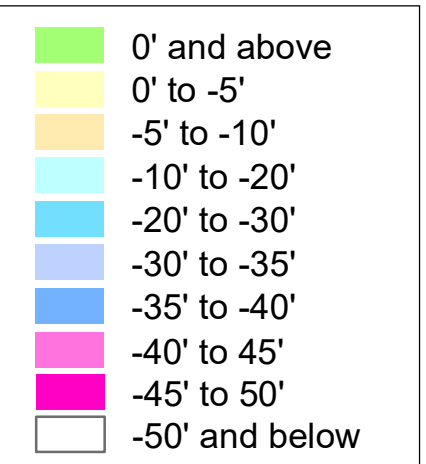
Access/Use: The United States Government furnishes these data and the recipient accepts and uses them with the express understanding that they are for official use only and are not to be distributed, copied, or reproduced in any form for any purpose other than that for which they were originally prepared. The user is responsible for the results of any use of these data. The application of the data for other than its intended purpose is not warranted. Data Constants: Hydrographic survey data is subject to change rapidly due to several factors including, but not limited to, changing bathymetry, sedimentation, and channel migration. The user is responsible for the results of any use of these data. The application of the data for other than its intended purpose is not warranted. The information depicted on this map represents the results of a survey conducted on or about the date of the survey. The user is responsible for the results of any use of these data. The application of the data for other than its intended purpose is not warranted.

U.S. ARMY CORPS OF ENGINEERS NEW ORLEANS DISTRICT		
Submitted:	Surveyed By: SPSR	Plotted By: AO
Recommended:	Chief, Survey Section	Checked By: AO
Approved:	Chief, Waterways Maintenance Section	

**MISSISSIPPI RIVER - B. R. TO GULF
FAIRVIEW CROSSING
MD_48_FRV_20221003_CS
03 October 2022**



LEGEND	
--- Federal Navigation Channel	● Cable Area
— Federal Navigation Center Line	■ Placement Area
— As-built Pipeline/Cable	□ Anchorage Area
..... Unconfirmed Pipeline/Cable	⊗ Obstruction Point
— Project Depth Contour	★ Wrecks-Submerged
□ Borrow Area	★ Beacon, General
● Shoalest Sounding**	◆ Red Navigation Buoy
◆ Green Navigation Buoy	



LWRP: 0.7
Gage Reading: R:2.7NO:1.8 USED:2.1 NAVD
Sea Conditions: CALM
Vessel Name: M/V TECHE
Survey Type: CONDITION
Sounding Frequency***: HIGH

NOTES:
Horizontal Coordinate System: North American Datum of 1983 (NAD83), projected to the State Plane Coordinate System (SPCS), Louisiana South Zone. Distance units in U.S. Survey Feet.
Vertical Datum: Soundings are shown in feet and indicate depths below Low Water Reference Plane 2007 (NAVD).
Distances on the Mississippi River, above and below Head of Passes are shown at 1 mile intervals.
The location of navigation aids are based on and provided by the U.S. Coast Guard and USACE crew.
2015 Aerial Photography data source: NAIP, USDA-FSA-APFO Aerial Photography Field Office.
Reference is N.O.A. Navigation Chart No. 11370.
** Shoalest Sounding per Quarter per Reach.
*** High frequency (200 kHz) survey data represents the first signal return at a sounding location and will include suspended solids, known as "fluff", if present. Low frequency (20 kHz) survey data normally penetrates through this "fluff" layer to depict elevations of consolidated bottom material. Low frequency accuracies may vary depending on channel conditions and fathometer settings.

**Sheet Reference Number
48 of 97**