

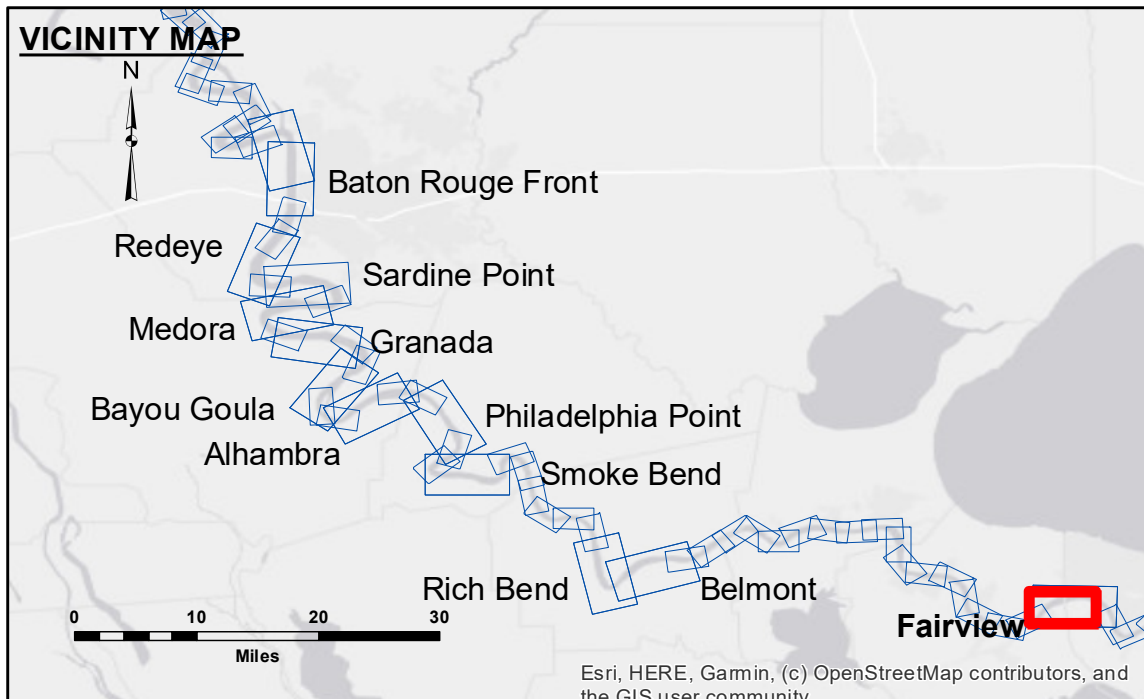
DISCLAIMER

The United States Government furnishes these data and the recipient accepts and uses them with the express understanding that the data are not warranted for any purpose other than that for which they were prepared, and that the Government assumes no liability for any use of the data for other than its intended purpose. The user is responsible for the results of any use of the data.

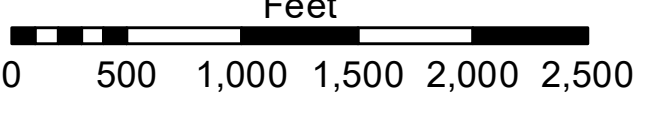
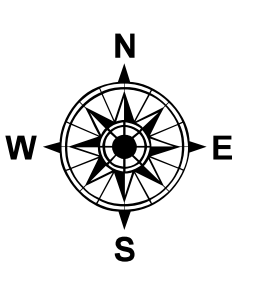
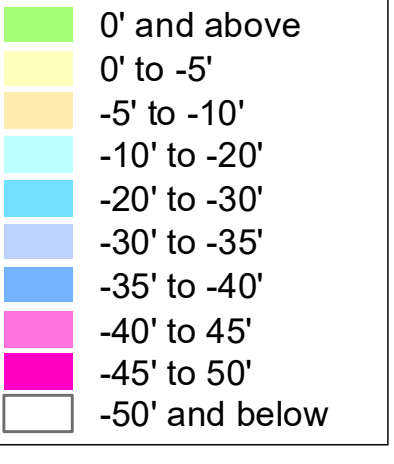
The information depicted on this map represents the results of a survey conducted on the Mississippi River in the vicinity of Fairview, Louisiana, and is not intended to represent the general condition existing at that time.

U.S. ARMY CORPS OF ENGINEERS NEW ORLEANS DISTRICT		
Submitted:	Surveyed By: RYLAND/SIMMONS	Plotted By: BD
Recommended:	Chief, Survey Section	Checked By: AOJH
Approved:	Chief, Waterways Maintenance Section	

MISSISSIPPI RIVER - B. R. TO GULF
FAIRVIEW CROSSING
MD_48_FRV_20250115_CS
15 January 2025



LEGEND		
--- Federal Navigation Channel	○ Cable Area	□ Borrow Area
— Federal Navigation Center Line	■ Placement Area	● Shoalest Sounding**
— As-built Pipeline/Cable	□ Anchorage Area	☆ Beacon, General
..... Unconfirmed Pipeline/Cable	⊗ Obstruction Point	◆ Red Navigation Buoy
— Project Depth Contour	⚓ Wrecks-Submerged	◆ Green Navigation Buoy



LWRP: 0.7
 Gage Reading: R:10.6 N:6.3 USED:7.80 NAVD
 Sea Conditions: CALM
 Vessel Name: OB-189
 Survey Type: CS
 Sounding Frequency***: HIGH

NOTES:

Horizontal Coordinate System:
 North American Datum of 1983 (NAD83), projected to the State Plane Coordinate System (SPCS), Louisiana South Zone. Distance units in U.S. Survey Feet.

Vertical Datum:
 Soundings are shown in feet and indicate depths below Low Water Reference Plane 2007 (NAVD).

Distances on the Mississippi River, above and below Head of Passes are shown at 1 mile intervals.

The location of navigation aids are based on and provided by the U.S. Coast Guard and USACE crew.

2015 Aerial Photography data source: NAIP, USDA-FSA-APFO Aerial Photography Field Office.

Reference is N.O.A.A. Navigation Chart No. 11370.

** Shoalest Sounding per Quarter per Reach.

*** High frequency (200 kHz) survey data represents the first signal return at a sounding location and will include suspended solids, known as "fluff", if present. Low frequency (20 kHz) survey data normally penetrates through this "fluff" layer to depict elevations of consolidated bottom material. Low frequency accuracies may vary depending on channel conditions and bathymeter settings.

Sheet Reference Number
48 of 97