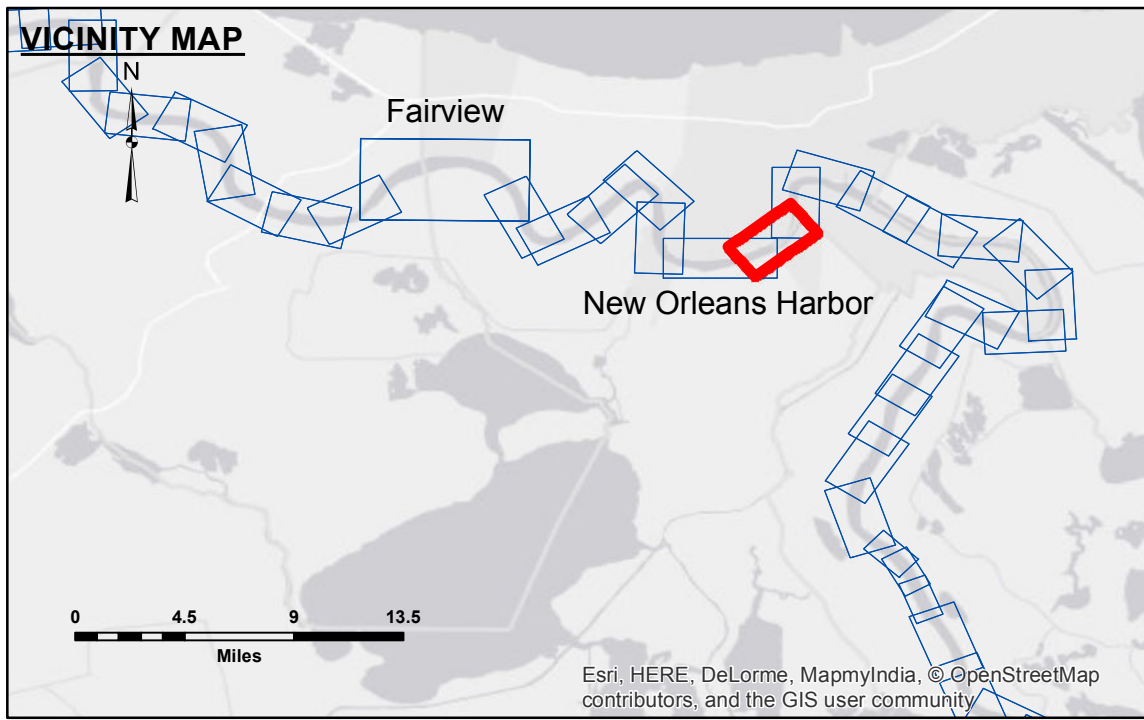


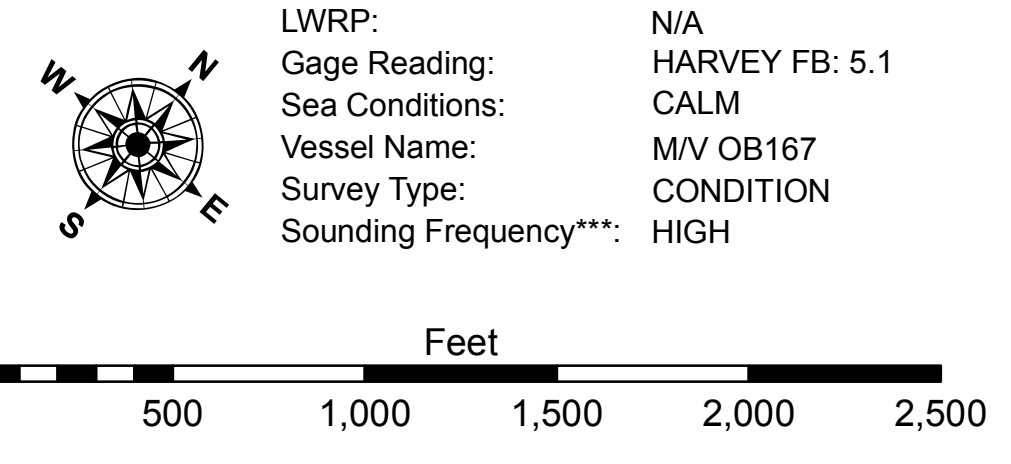
DISCLAIMER
 The information depicted on this map represents the results of a survey conducted by the U.S. Army Corps of Engineers. The user is responsible for the accuracy, completeness, and reliability of the data for their intended purpose. The user is responsible for the accuracy, completeness, and reliability of the data for their intended purpose. The user is responsible for the accuracy, completeness, and reliability of the data for their intended purpose.

Submitted:	Surveyed By:	DR, SP
Recommended:	Plotted By:	AO
Approved:	Chief, Survey Section	AO
	Chief, Waterways Maintenance Section	AO

**MISSISSIPPI RIVER - B.R. TO GULF
 NO HARBOR - SHEET 2
 MD_55_NO2_20161110
 10 November 2016**



LEGEND		LEGEND		LEGEND	
--- Federal Navigation Channel	○ Cable Area	■ Shoaling Area	○ 0' and above	⊙ Shoalest Sounding**	○ 0' to -5'
— Federal Navigation Center Line	□ Placement Area	● Shoalest Sounding**	○ -5' to -10'	☆ Beacon, General	○ -10' to -20'
— As-built Pipeline/Cable	□ Anchorage Area	☆ Beacon, General	○ -20' to -30'	◆ Red Navigation Buoy	○ -30' to -35'
..... Unconfirmed Pipeline/Cable	⊗ Obstruction Point	◆ Red Navigation Buoy	○ -35' to -40'	◇ Green Navigation Buoy	○ -40' to 45'
— Project Depth Contour	⚓ Wrecks-Submerged	◇ Green Navigation Buoy	○ -45' and below		



NOTES:
 Horizontal Coordinate System:
 North American Datum of 1983 (NAD83), projected to the State Plane Coordinate System (SPCS), Louisiana South Zone. Distance units in U.S. Survey Feet.
 Vertical Datum:
 Soundings are shown in feet and indicate depths below Low Water Reference Plane 2007 (NGVD).
 Distances on the Mississippi River, above and below Head of Passes are shown at 1 mile intervals.
 The location of navigation aids are base on and provided by the U.S. Coast Guard and USACE crew.
 2010 Aerial Photography data source: NAIP, USDA-FSA-APFO Aerial Photography Field Office.
 Reference is N.O.A. Navigation Chart No. 11370.
 ** Shoalest Sounding per Quarter per Reach.
 *** High frequency (200 kHz) survey data represents the first signal return at a sounding location and will include suspended solids, known as "fluff", if present. Low frequency (20 kHz) survey data normally penetrates through this "fluff" layer to depict elevations of consolidated bottom material. Low frequency accuracies may vary depending on channel conditions and fathometer settings.

**Sheet Reference Number
 55 of 97**