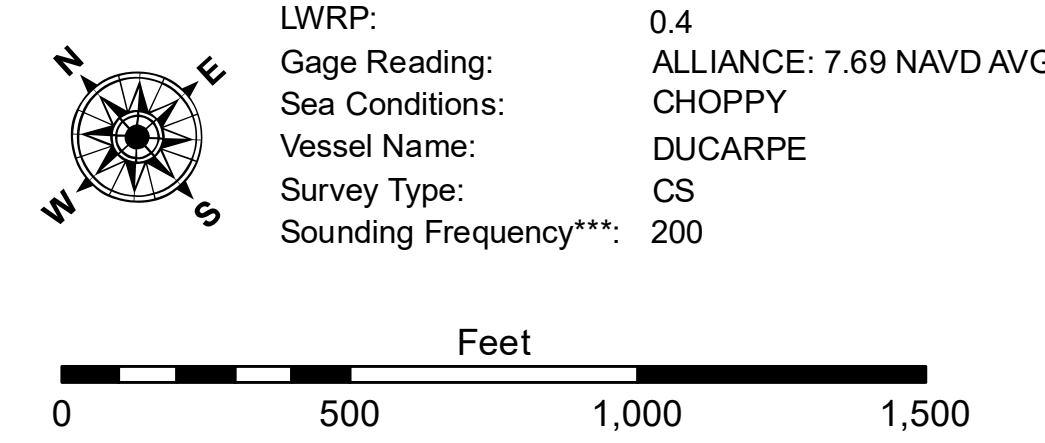
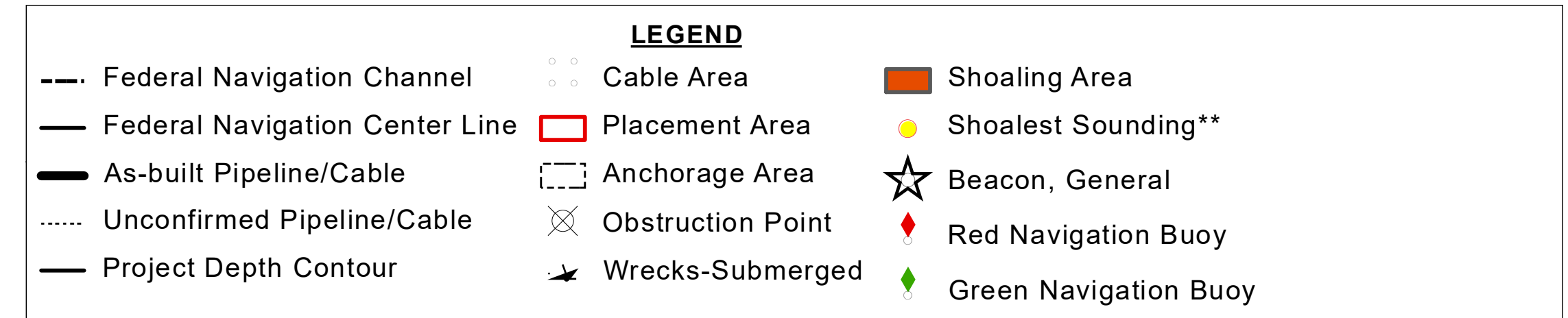
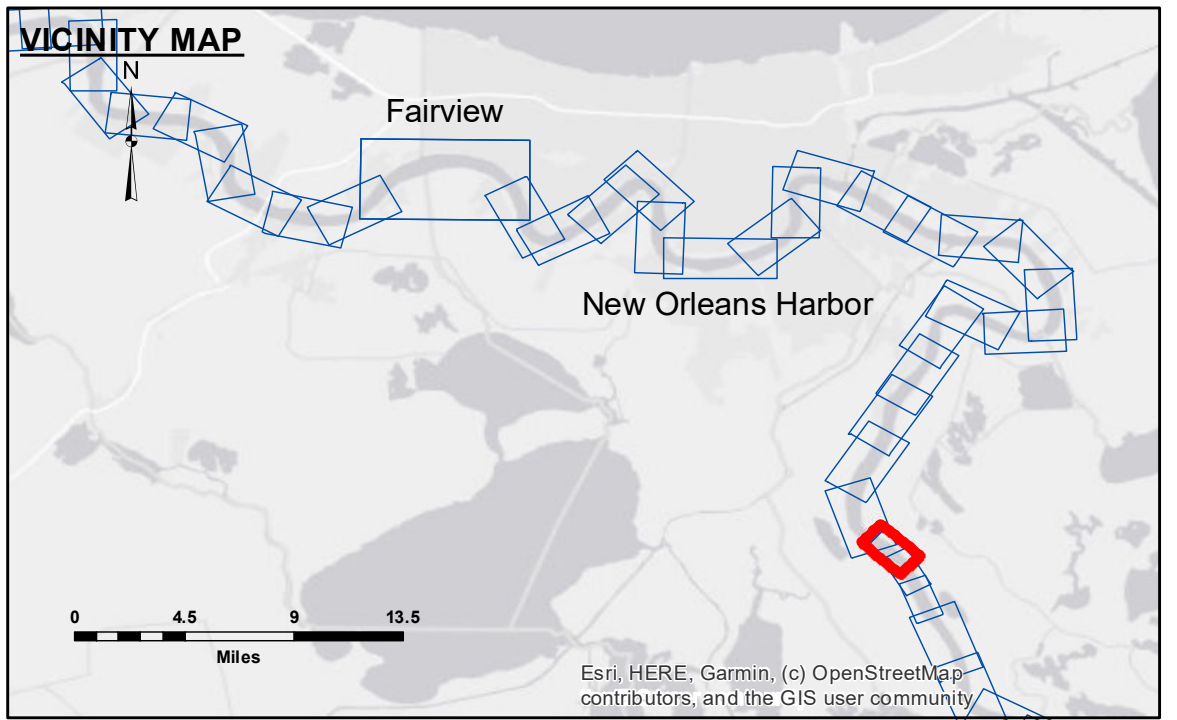


Sheet 69

Sheet 71



NOTES:

Horizontal Coordinate System:
 North American Datum of 1983 (NAD83), projected to the State Plane Coordinate System (SPCS), Louisiana South Zone. Distance units in U.S. Survey Feet.

Vertical Datum:
 Soundings are shown in feet and indicate depths below Low Water Reference Plane 2007 (NAVD).
 Datum Relationships for Alliance (0.0' Gage Datum = 0.0' NAVD88 (2009.55) = 0.71' NGVD29 = -0.4' LWRP)

Datum Relationships for Alliance (0.0' Gage Datum = 0.0' NAVD88 (2009.55) = 0.71' NGVD29 = -0.4' LWRP)

Distances on the Mississippi River, above and below Head of Passes are shown at 1 mile intervals.

The location of navigation aids are base on and provided by the U.S. Coast Guard and USACE crew.
 2015 Aerial Photography data source: NAIP, USDA-FSA-APFO Aerial Photography Field Office.

Reference is N.O.A.A. Navigation Chart No. 11370.

** Shoalest Sounding per Quarter per Reach.

*** High frequency (200 kHz) survey data represents the first signal return at a sounding location and will include suspended solids, known as "fluff", if present. Low frequency (20 kHz) survey data normally penetrates through this "fluff" layer to depict elevations of consolidated bottom material. Low frequency accuracies may vary depending on channel conditions and fathometer settings.

U.S. ARMY CORPS OF ENGINEERS NEW ORLEANS DISTRICT	
Submitted:	Surveyed By: PM, JA
Recommended:	Plotted By: BD
Approved:	Checked By: AO/JH

**MISSISSIPPI RIVER - B.R. TO GULF
 SALT WATER BARRIER, BORROW 2
 MD_70_SBX_20240524_CS
 24 May 2024**

**Sheet Reference Number
 70 of 97**

Revision Number:
 4.2-20240420

DISTRIBUTION LIABILITY: The data represents the results of data collection/processing for a specific US Army Corps of Engineers project and is not intended for use in any other project. The user is responsible for the accuracy, completeness, and reliability of the data for their intended use. The user is responsible for the accuracy, completeness, and reliability of the data for their intended use. The user is responsible for the accuracy, completeness, and reliability of the data for their intended use.

