

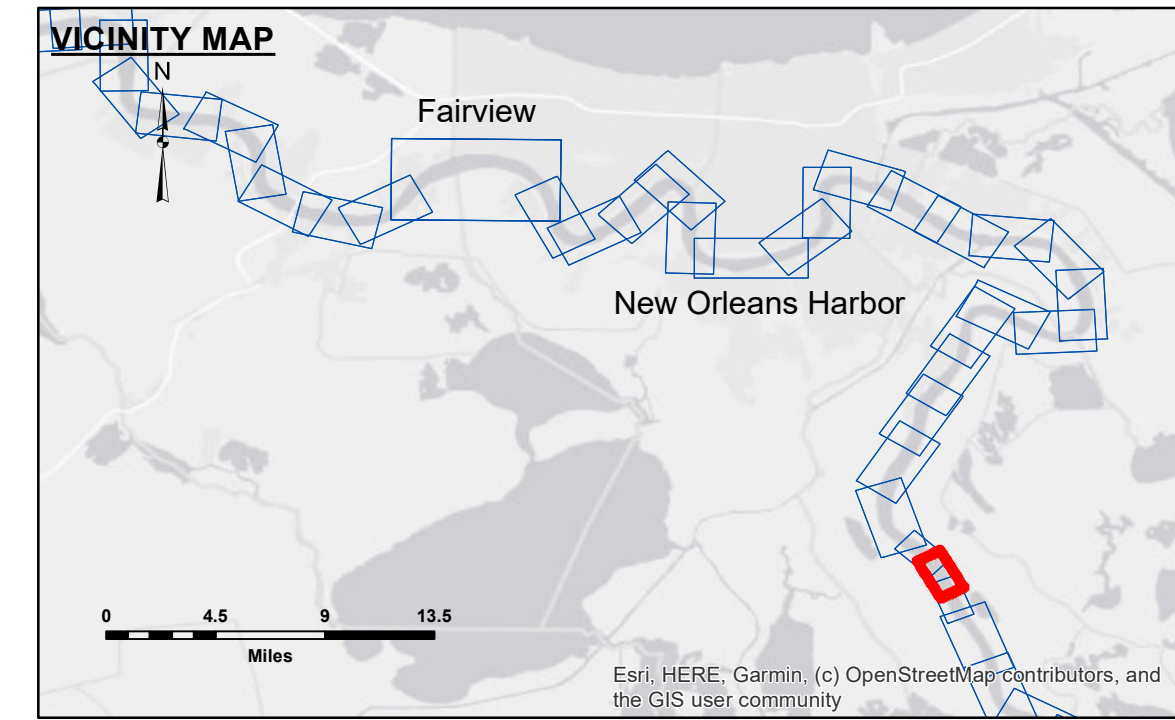
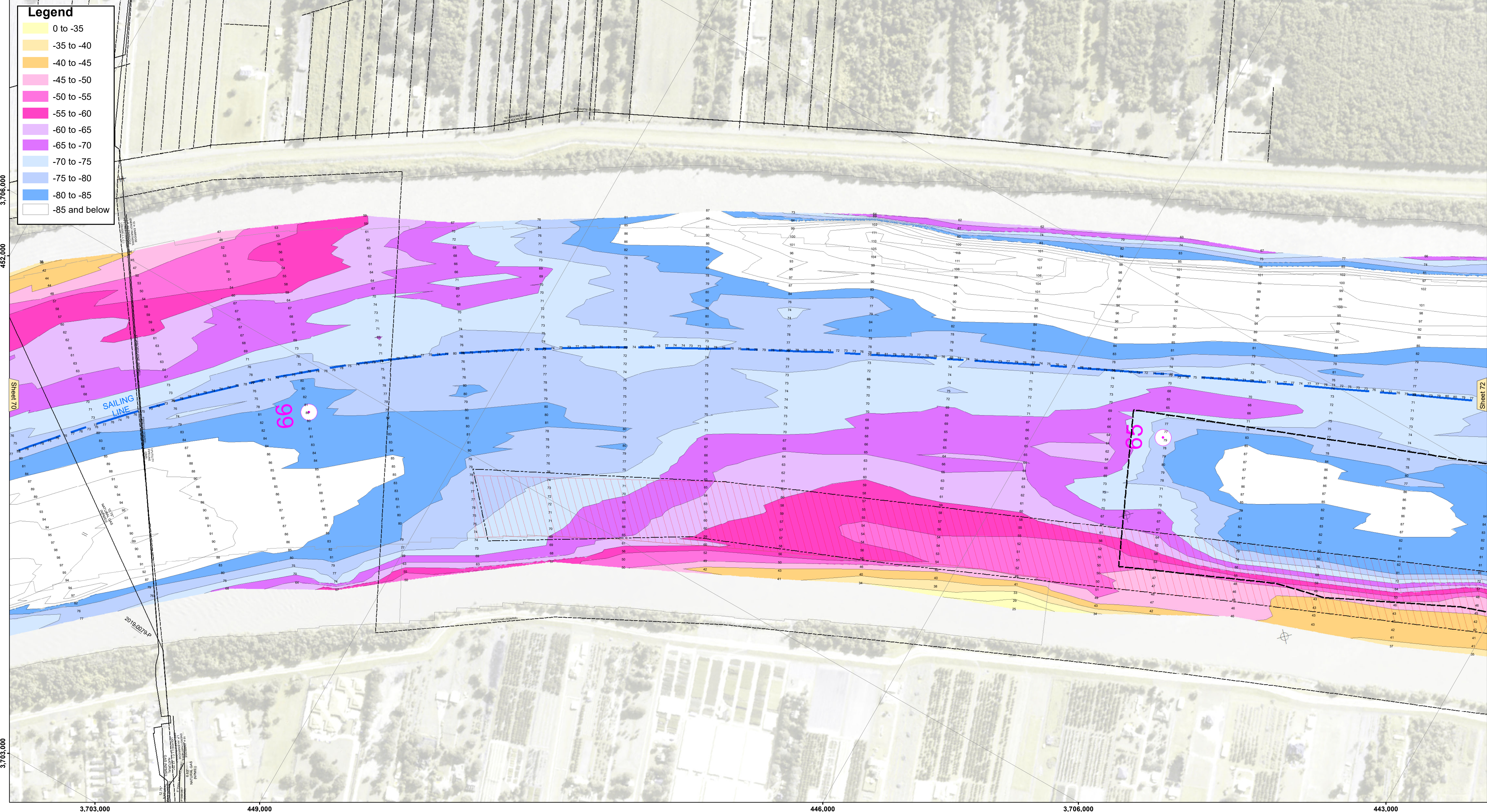
452,000

3,709,000 449,000

446,000

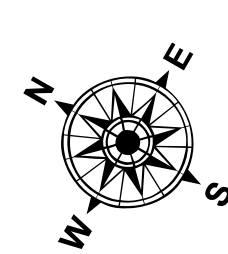
Legend

- 0 to -35
- 35 to -40
- 40 to -45
- 45 to -50
- 50 to -55
- 55 to -60
- 60 to -65
- 65 to -70
- 70 to -80
- 80 to -85
- 85 and below

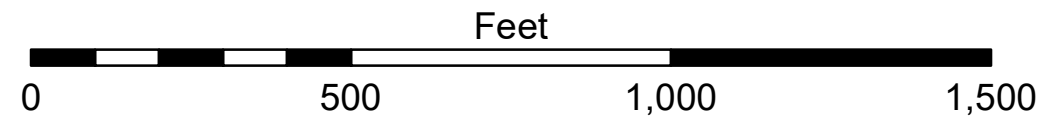


LEGEND

- Federal Navigation Channel
- Federal Navigation Center Line
- As-built Pipeline/Cable
- Unconfirmed Pipeline/Cable
- Project Depth Contour
- Cable Area
- Placement Area
- Anchorage Area
- ⊗ Obstruction Point
- ✈ Wrecks-Submerged
- Shoaling Area
- Shoalest Sounding**
- ☆ Beacon, General
- ◆ Red Navigation Buoy
- ◆ Green Navigation Buoy



LWRP: 0.4
 Gage Reading: ALLIANCE: 1.65 NAVD AVG
 Sea Conditions: CALM
 Vessel Name: OB167
 Survey Type: CONDITION
 Sounding Frequency***: 200KHZ



NOTES:
 Horizontal Coordinate System:
 North American Datum of 1983 (NAD83), projected to the State Plane
 Coordinate System (SPCS), Louisiana South Zone. Distance units in U.S. Survey Feet.
 Vertical Datum:
 Soundings are shown in feet and indicate depths below Low Water Reference Plane 2007 (NAVD).
 Distances on the Mississippi River, above and below Head of Passes are shown
 at 1 mile intervals.
 The location of navigation aids are base on and provided by the U.S. Coast Guard and USACE crew.
 2017 Aerial Photography data source: NAIP, USDA-FSA-APFO Aerial Photography Field Office.
 Reference is N.O.A. Navigation Chart No. 11370.
 ** Shoalest Sounding per Quarter per Reach.
 *** High frequency (200 kHz) survey data represents the first signal return at a sounding
 location and will include suspended solids, known as "fluff", if present. Low frequency (20 kHz)
 survey data normally penetrates through this "fluff" layer to depict elevations of consolidated bottom
 material. Low frequency accuracies may vary depending on channel conditions and fathometer
 settings.



DISCLAIMER
 The information depicted on this map represents the results of a
 hydrographic survey conducted by the U.S. Army Corps of Engineers
 and is not intended for navigation. The user is responsible for the
 accuracy of the data and for the safety of the vessel. The
 information depicted on this map represents the results of a
 hydrographic survey conducted by the U.S. Army Corps of Engineers
 and is not intended for navigation. The user is responsible for the
 accuracy of the data and for the safety of the vessel. The
 information depicted on this map represents the results of a
 hydrographic survey conducted by the U.S. Army Corps of Engineers
 and is not intended for navigation. The user is responsible for the
 accuracy of the data and for the safety of the vessel.

U.S. ARMY CORPS OF ENGINEERS NEW ORLEANS DISTRICT		
Submitted:	Surveyed By: PM/AO	Plotted By: JH
Recommended: Chief, Survey Section	Checked By: JH	Approved: Chief, Waterways Maintenance Section

**MISSISSIPPI RIVER - B.R. TO GULF
 SALT WATER BARRIER
 MD_71_SB2X_20230921_CS
 21 September 2023**

**Sheet
 Reference
 Number
 71 of 97**

Revision Number:
4.2-20230420