

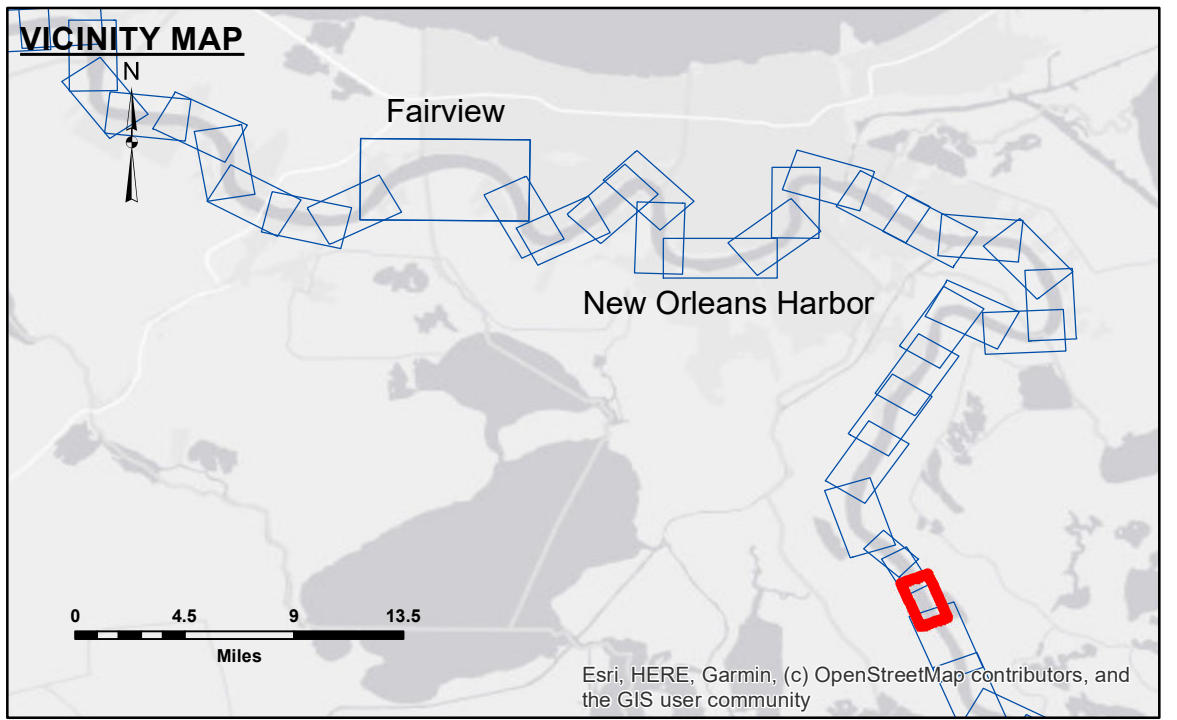
**DISCLAIMER**

The information depicted on this map represents the results of a survey conducted by the U.S. Army Corps of Engineers. The data is not intended for use in any other manner than that for which it was collected. The user is responsible for the accuracy, completeness, and reliability of the data for any purpose other than that for which it was collected. The user is responsible for the accuracy, completeness, and reliability of the data for any purpose other than that for which it was collected. The user is responsible for the accuracy, completeness, and reliability of the data for any purpose other than that for which it was collected.

Submitted:	Reviewed:	Checked:
Submitted:	Reviewed:	Checked:
Submitted:	Reviewed:	Checked:

U.S. ARMY CORPS OF ENGINEERS  
NEW ORLEANS DISTRICT

**MISSISSIPPI RIVER - B.R. TO GULF**  
**SALT WATER BARRIER, BORROW 1**  
MD\_72\_SB3X\_20230921\_CS  
21 September 2023



**LEGEND**

--- Federal Navigation Channel	○ Cable Area	■ Shoaling Area
— Federal Navigation Center Line	□ Placement Area	● Shoalest Sounding**
— As-built Pipeline/Cable	⊗ Anchorage Area	★ Beacon, General
..... Unconfirmed Pipeline/Cable	⊗ Obstruction Point	◆ Red Navigation Buoy
— Project Depth Contour	⊗ Wrecks-Submerged	◆ Green Navigation Buoy

**LEGEND**

LWRP: 0.4  
Gage Reading: ALLIANCE: 1.65 NAVD AVG  
Sea Conditions: CALM  
Vessel Name: OB167  
Survey Type: CONDITION  
Sounding Frequency\*\*\*: 200KHZ

Scale: 0, 500, 1,000, 1,500 Feet

**NOTES:**

Horizontal Coordinate System: North American Datum of 1983 (NAD83), projected to the State Plane Coordinate System (SPCS), Louisiana South Zone. Distance units in U.S. Survey Feet.

Vertical Datum: Soundings are shown in feet and indicate depths below National Geodetic Vertical Datum of 1929 (NGVD29).

Datum Relationships for Alliance (0.0' Gage Datum = 0.0' NAVD88 (2009.55) = 0.71' NGVD29)

Distances on the Mississippi River, above and below Head of Passes are shown at 1 mile intervals.

The location of navigation aids are based on and provided by the U.S. Coast Guard and USACE crew.

2015 Aerial Photography data source: NAIP, USDA-FSA-APFO Aerial Photography Field Office.

Reference is N.O.A. Navigation Chart No. 11370.

\*\* Shoalest Sounding per Quarter per Reach.

\*\*\* High frequency (200 kHz) survey data represents the first signal return at a sounding location and will include suspended solids, known as "fluff", if present. Low frequency (20 kHz) survey data normally penetrates through this "fluff" layer to depict elevations of consolidated bottom material. Low frequency accuracies may vary depending on channel conditions and fathometer settings.

**Sheet Reference Number**  
72 of 97

Revision Number:  
4.2-20230921