

**DISCLAIMER**

The United States Government furnishes these data and the recipient accepts and uses them with the express understanding that the Government makes no warranty, expressed or implied, concerning the accuracy, completeness, reliability, usability or suitability for any particular purpose of the data. The user is responsible for the results of the application of the data for other than its intended purpose.

Date: Constructive Hydrographic survey data is subject to change rapidly due to several factors including but not limited to dredging operations, channel migration, and other factors. The user is advised that the hydrographic conditions which develop after the date of the survey may differ from those shown on this map. The user is advised that the information depicted on this map represents the results of a survey conducted under the general conditions existing at that time.

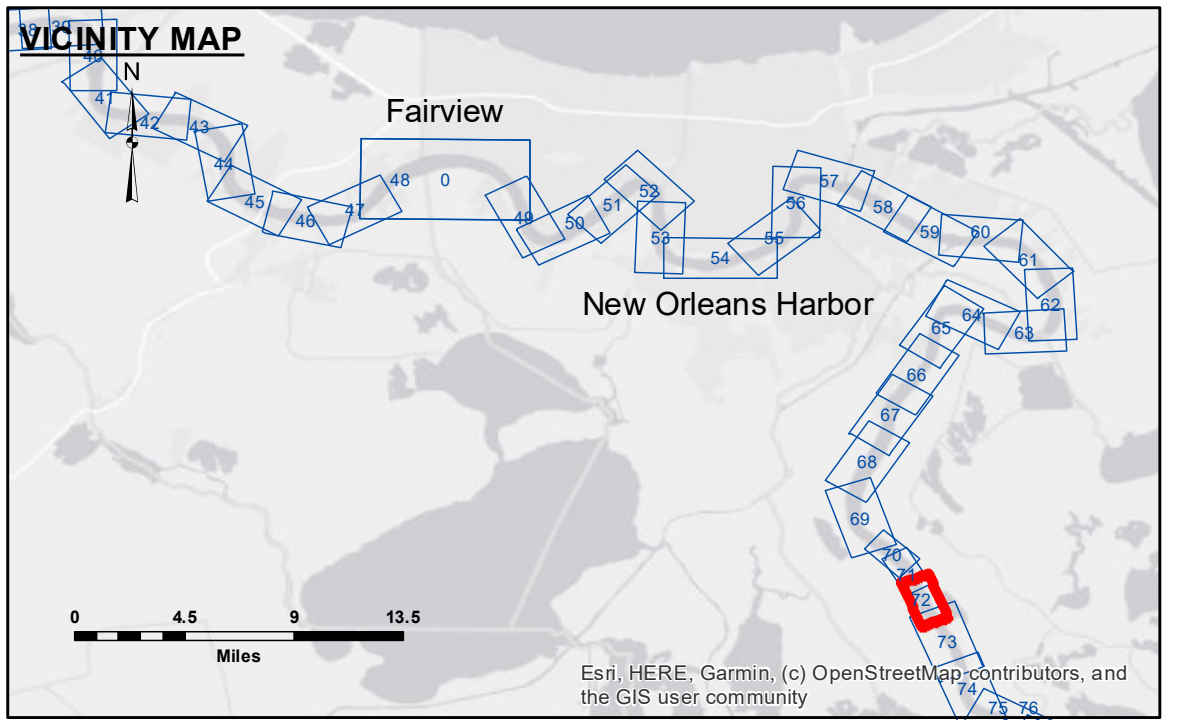
Internal use. Product maintainers should not modify this product.

Submitted:	Surveyed By:	Checked By:
Recommended:	PM, LT	ADJH
Approved:	Filed By:	
	BD	

U.S. ARMY CORPS OF ENGINEERS  
NEW ORLEANS DISTRICT

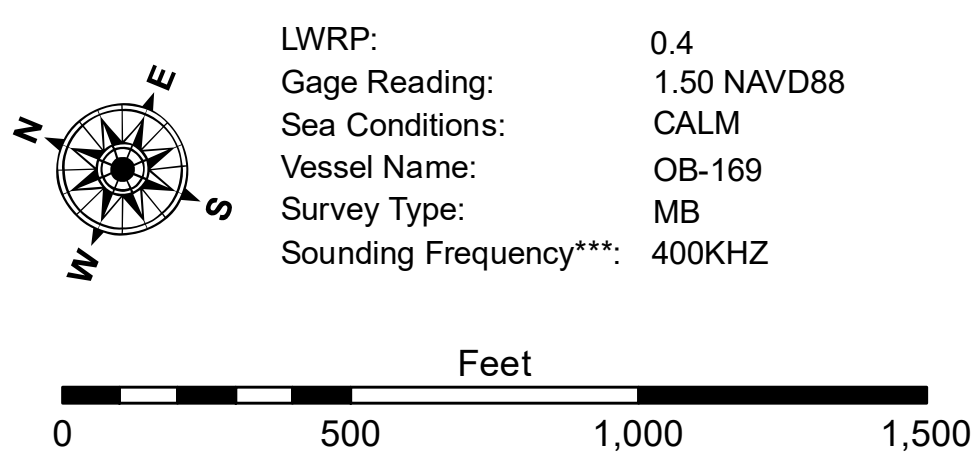
**MISSISSIPPI RIVER - B.R. TO GULF  
SALT WATER BARRIER, BORROW 1  
MD\_72\_SB3\_20241126\_CS\_3X3**

26 November 2024



**LEGEND**

--- Federal Navigation Channel	○ Cable Area	■ Shoaling Area
— Federal Navigation Center Line	□ Placement Area	● Shoalest Sounding**
— As-built Pipeline/Cable	⊗ Anchorage Area	☆ Beacon, General
..... Unconfirmed Pipeline/Cable	⊗ Obstruction Point	◆ Red Navigation Buoy
— Project Depth Contour	⚓ Wrecks-Submerged	◆ Green Navigation Buoy



**NOTES:**

Horizontal Coordinate System:  
North American Datum of 1983 (NAD83), projected to the State Plane Coordinate System (SPCS), Louisiana South Zone. Distance units in U.S. Survey Feet.

Vertical Datum:  
Soundings are shown in feet and indicate depths below Low Water Reference Plane 2007 (LWRP07).

Datum Relationships for Alliance (0.0' Gage Datum = 0.0' NAVD88 (2009.55) = 0.71' NGVD29 = -0.4' LWRP07)

Distances on the Mississippi River, above and below Head of Passes are shown at 1 mile intervals.

The location of navigation aids are base on and provided by the U.S. Coast Guard and USACE crew.

2015 Aerial Photography data source: NAIP, USDA-FSA-APFO Aerial Photography Field Office.

Reference is N.O.A. Navigation Chart No. 11370.

\*\* Shoalest Sounding per Quarter per Reach.

\*\*\* High frequency (200 kHz) survey data represents the first signal return at a sounding location and will include suspended solids, known as "fluff", if present. Low frequency (20 kHz) survey data normally penetrates through this "fluff" layer to depict elevations of consolidated bottom material. Low frequency accuracies may vary depending on channel conditions and fathometer settings.

**Sheet Reference Number**

72 of 97

Revision Number:  
4.2-20210420