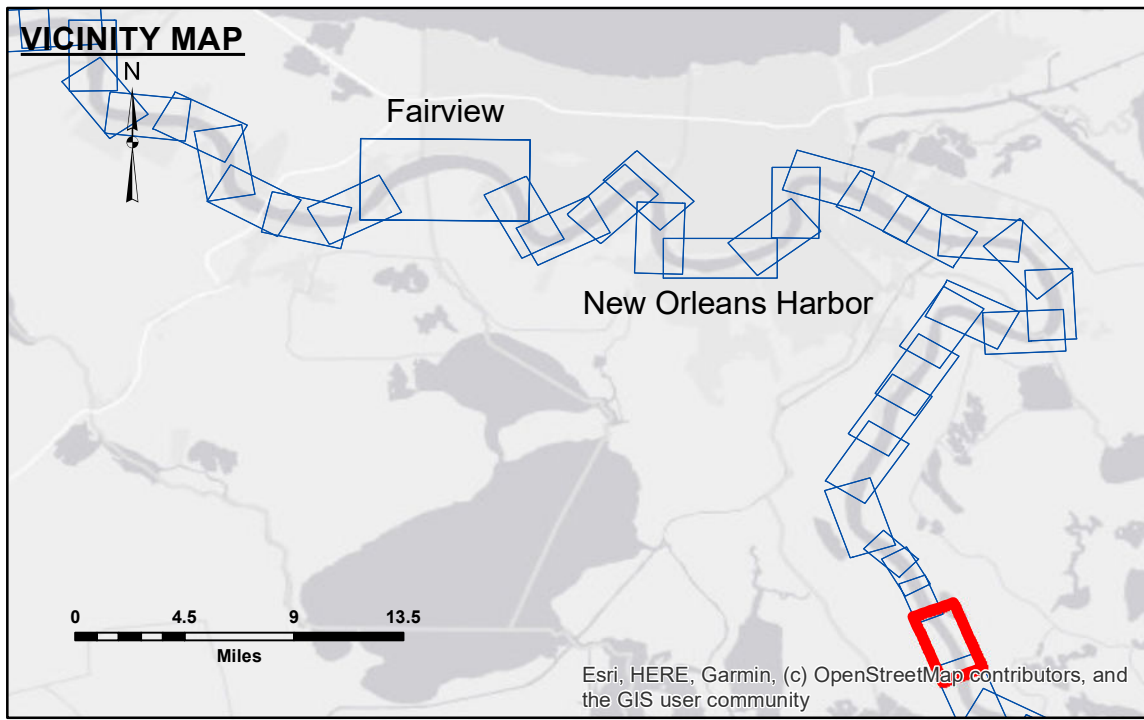


DISCLAIMER
 The data represents the results of a survey conducted for a specific US Army Corps of Engineers project. The user is responsible for the accuracy, completeness, and reliability of the data for its intended use. The user is responsible for the results of the application of the data for other than its intended purpose.
 Data Constants: Hydrographic survey data is subject to change due to several factors including but not limited to changing hydrographic conditions when developing the data of the survey. The user is responsible for the accuracy of the data. The user is responsible for the results of the application of the data for other than its intended purpose.
 The information depicted on this map represents the results of a survey conducted for a specific US Army Corps of Engineers project. The user is responsible for the accuracy, completeness, and reliability of the data for its intended use. The user is responsible for the results of the application of the data for other than its intended purpose.

Submitted:	Surveyed By: PM, JA
Recommended:	Plotted By: BD
Approved:	Checked By: AD/JH

U.S. ARMY CORPS OF ENGINEERS
 NEW ORLEANS DISTRICT

MISSISSIPPI RIVER - B. R. TO GULF ALLIANCE
MD_73_ALIX_20240524_CS
 24 May 2024



LEGEND

--- Federal Navigation Channel	○ Cable Area	■ Shoaling Area	0' and above
— Federal Navigation Center Line	□ Placement Area	● Shoalest Sounding**	0' to -5'
— As-built Pipeline/Cable	⊠ Anchorage Area	★ Beacon, General	-5' to -10'
..... Unconfirmed Pipeline/Cable	⊗ Obstruction Point	◆ Red Navigation Buoy	-10' to -20'
— Project Depth Contour	✈ Wrecks-Submerged	◆ Green Navigation Buoy	-20' to -30'
			-30' to -35'
			-35' to -40'
			-40' to 45'
			-45' to 50'
			-50' and below

Compass rose showing North, South, East, West.

Scale bar: 0, 500, 1,000, 1,500, 2,000, 2,500 Feet

LWRP: 0.4
 Gage Reading: ALLIANCE: 7.69 NAVD AVG.
 Sea Conditions: CHOPPY
 Vessel Name: DUCARPE
 Survey Type: CS
 Sounding Frequency***: 200

NOTES:
 Horizontal Coordinate System:
 North American Datum of 1983 (NAD83), projected to the State Plane Coordinate System (SPCS), Louisiana South Zone. Distance units in U.S. Survey Feet.
 Vertical Datum:
 Soundings are shown in feet and indicate depths below Low Water Reference Plane 2007 (NAVD).
 Distances on the Mississippi River, above and below Head of Passes are shown at 1 mile intervals.
 The location of navigation aids are base on and provided by the U.S. Coast Guard and USACE crew.
 2017 Aerial Photography data source: NAIP, USDA-FSA-APFO Aerial Photography Field Office.
 Reference is N.O.A. Navigation Chart No. 11370.
 ** Shoalest Sounding per Quarter per Reach.
 *** High frequency (200 kHz) survey data represents the first signal return at a sounding location and will include suspended solids, known as "fluff", if present. Low frequency (20 kHz) survey data normally penetrates through this "fluff" layer to depict elevations of consolidated bottom material. Low frequency accuracies may vary depending on channel conditions and fathometer settings.

Sheet Reference Number
 73 of 97

Revision Number:
 4-2-2024(04/24)