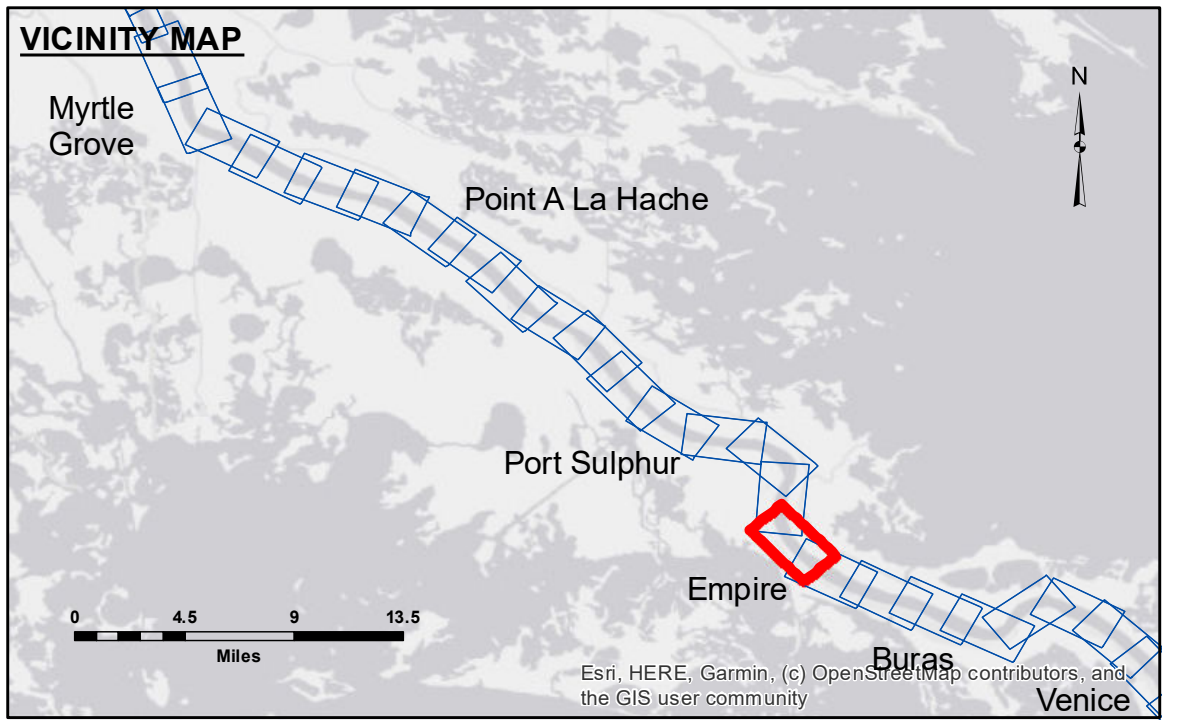


**DISCLAIMER:** The data represented on this map represents the results of a collection of data for a specific US Army Corps of Engineers project. The data is only valid for its intended use, control, time and accuracy specifications. The user is responsible for the results. The application of the data for other than its intended purpose is not recommended. Hydrographic survey data is subject to change due to several factors including but not limited to dredging, sedimentation, and channel migration. The user is responsible for the results of the data. The user is responsible for the results of the data. The user is responsible for the results of the data.

Submitted:	Surveyed By: SPPM
Recommended: Chief Survey Section	Plotted By: AO
Approved: Chief Waterways Maintenance Section	Checked By: AC

**MISSISSIPPI RIVER - B.R. TO GULF  
TROPICAL BEND - SHEET 1  
MD\_89\_TB1X\_20210513\_CS  
13 May 2021**



LEGEND		
--- Federal Navigation Channel	○ Cable Area	■ Shoaling Area
— Federal Navigation Center Line	□ Placement Area	● Shoalest Sounding**
— As-built Pipeline/Cable	⊗ Anchorage Area	☆ Beacon, General
..... Unconfirmed Pipeline/Cable	⊗ Obstruction Point	◆ Red Navigation Buoy
— Project Depth Contour	⊗ Wrecks-Submerged	◆ Green Navigation Buoy
		■ 0' and above
		■ 0' to -5'
		■ -5' to -10'
		■ -10' to -20'
		■ -20' to -30'
		■ -30' to -35'
		■ -35' to -40'
		■ -40' to 45'
		■ -45' and below

**LWRP:** 0.2  
**Gage Reading:** EM:3.9V:2.2 USED:3.8 NAVD  
**Sea Conditions:** CHOP  
**Vessel Name:** OB-167  
**Survey Type:** CONDITION  
**Sounding Frequency\*\*\*:** HIGH

**NOTES:**  
 Horizontal Coordinate System:  
 North American Datum of 1983 (NAD83), projected to the State Plane Coordinate System (SPCS), Louisiana South Zone. Distance units in U.S. Survey Feet.  
 Vertical Datum:  
 Soundings are shown in feet and indicate depths below Low Water Reference Plane 2007 (NAVD).  
 Distances on the Mississippi River, above and below Head of Passes are shown at 1 mile intervals.  
 The location of navigation aids are base on and provided by the U.S. Coast Guard and USACE crew.  
 2017 Aerial Photography data source: NAIP, USDA-FSA-APFO Aerial Photography Field Office.  
 Reference is N.O.A. Navigation Chart No. 11370.  
 \*\*\* Shoalest Sounding per Quarter per Reach.  
 \*\*\* High frequency (200 kHz) survey data represents the first signal return at a sounding location and will include suspended solids, known as "fluff", if present. Low frequency (20 kHz) survey data normally penetrates through this "fluff" layer to depict elevations of consolidated bottom material. Low frequency accuracies may vary depending on channel conditions and fathometer settings.

**Sheet Reference Number  
89 of 97**