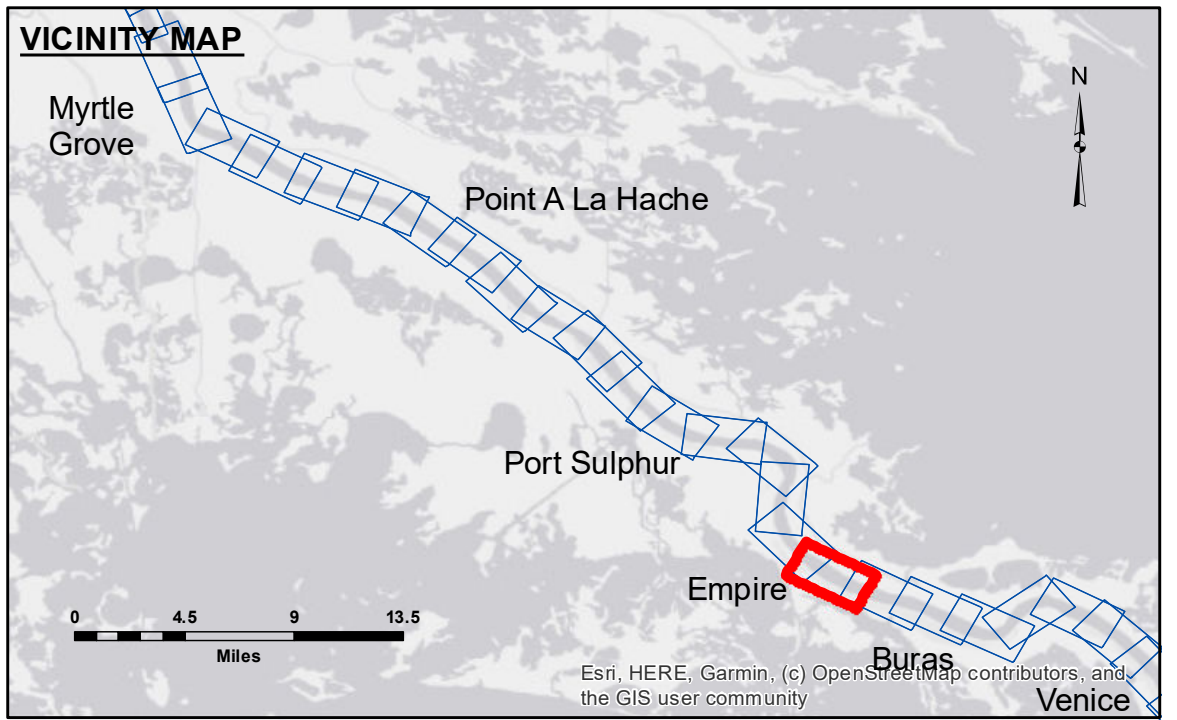


Distribution Liability: The data represents the results of data collection performed for a specific US Army Corps of Engineers project and is only valid for its intended use, control, time and accuracy specifications. The user is responsible for the results of the application of the data for other than its intended purpose.

Data Constraints: Hydrographic survey data is subject to change rapidly due to several factors including but not limited to dredging operations, shifting sandbars, and other changes in the hydrographical conditions when developed after the date of the survey. The user is responsible for the results of the data when used for purposes other than those for which it was collected. The user is advised to consult the latest hydrographic data available for the area of interest.

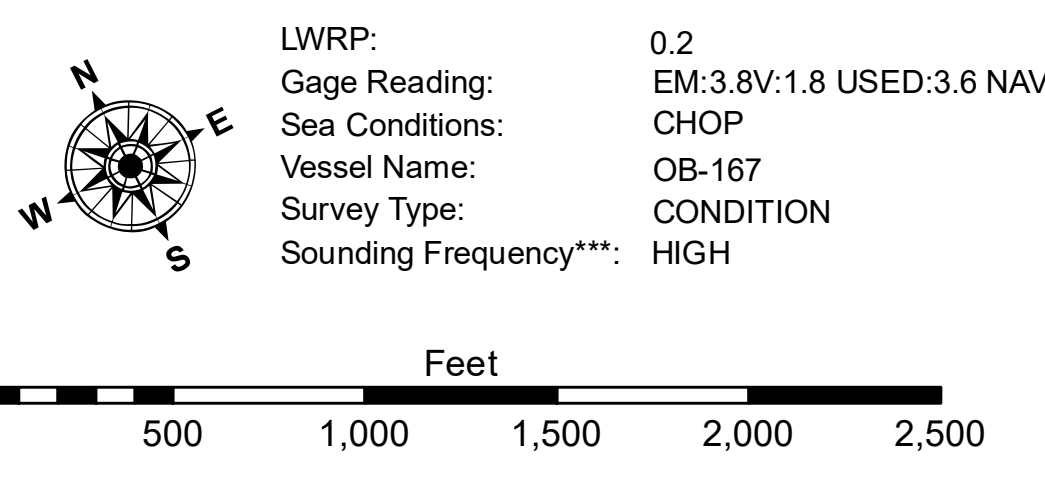
U.S. ARMY CORPS OF ENGINEERS NEW ORLEANS DISTRICT	
Submitted By: SPPM	Plotted By: AO
Recommended By: Chief Survey Section	Checked By: AO
Approved By: Chief Waterways Maintenance Section	

**MISSISSIPPI RIVER - B.R. TO GULF
TROPICAL BEND - SHEET 2**
MD_90_TB2X_20210513_CS
13 May 2021



LEGEND

--- Federal Navigation Channel	○ Cable Area	■ Shoaling Area	■ 0' and above
— Federal Navigation Center Line	□ Placement Area	● Shoalest Sounding**	■ 0' to -5'
— As-built Pipeline/Cable	□ Anchorage Area	★ Beacon, General	■ -5' to -10'
..... Unconfirmed Pipeline/Cable	⊗ Obstruction Point	◆ Red Navigation Buoy	■ -10' to -20'
— Project Depth Contour	⚓ Wrecks-Submerged	◆ Green Navigation Buoy	■ -20' to -30'
			■ -30' to -35'
			■ -35' to -40'
			■ -40' to -45'
			■ -45' and below



NOTES:

Horizontal Coordinate System:
North American Datum of 1983 (NAD83), projected to the State Plane Coordinate System (SPCS), Louisiana South Zone. Distance units in U.S. Survey Feet.

Vertical Datum:
Soundings are shown in feet and indicate depths below Low Water Reference Plane 2007 (NAVD).

Distances on the Mississippi River, above and below Head of Passes are shown at 1 mile intervals.

The location of navigation aids are based on and provided by the U.S. Coast Guard and USACE crew.

2017 Aerial Photography data source: NAIP, USDA-FSA-APFO Aerial Photography Field Office.

Reference is N.O.A. Navigation Chart No. 11370.

** Shoalest Sounding per Quarter per Reach.

*** High frequency (200 kHz) survey data represents the first signal return at a sounding location and will include suspended solids, known as "fluff", if present. Low frequency (20 kHz) survey data normally penetrates through this "fluff" layer to depict elevations of consolidated bottom material. Low frequency accuracies may vary depending on channel conditions and fathometer settings.

Sheet Reference Number
90 of 97

Revision Number:
4.1-20191105