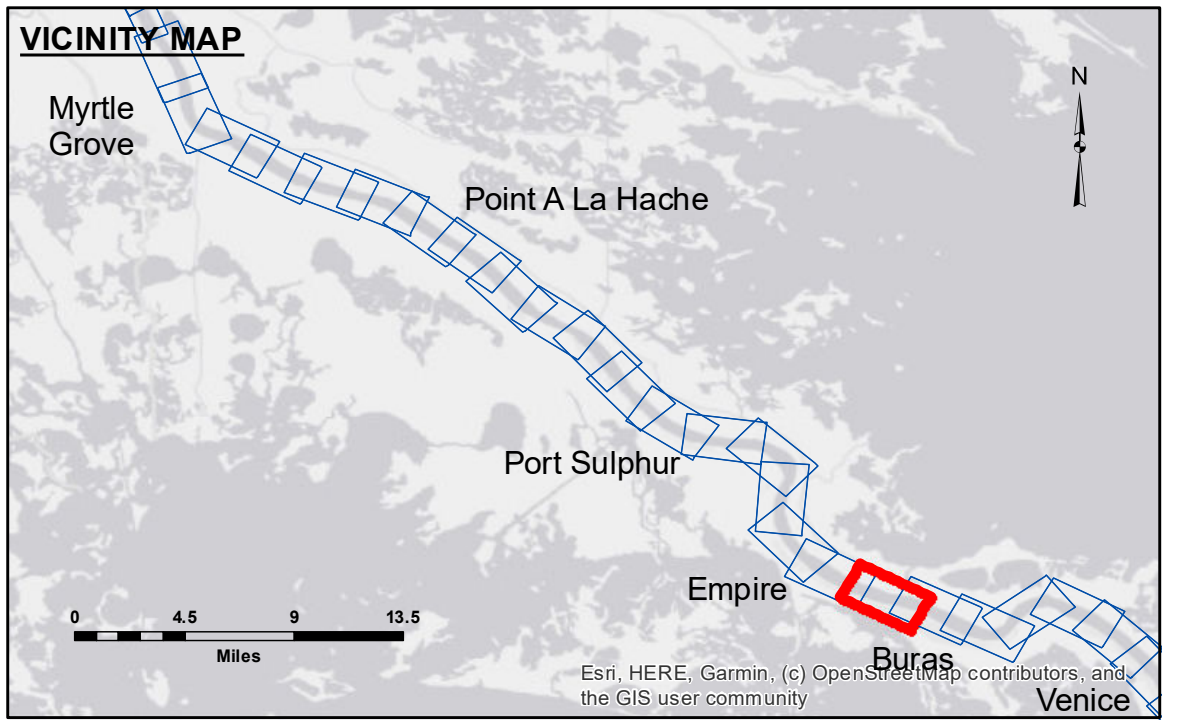


DISCLAIMER
The United States Government furnishes these data and the recipient accepts and uses them with the express understanding that they are not to be used for any purpose other than that for which they were prepared. The user is responsible for the results of any use of these data. The application of the data for other than its intended purpose is not warranted. Hydrographic survey data is subject to change due to several factors including but not limited to dredging, shoaling, and other changes in the hydrographical conditions which develop after the date of the survey. The information depicted on this map represents the results of a survey conducted on or about the date indicated. It is not to be considered a representation of the general condition existing at that time.

Submitted:	Surveyed By: SPPM
Recommended: Chart Survey Section	Plotted By: AO
Approved: Chart Waterways Maintenance Section	Checked By: AO

MISSISSIPPI RIVER - B.R. TO GULF
BURAS - SHEET 1
MD_91_BUYX_20210513_CS
13 May 2021



LEGEND

--- Federal Navigation Channel	○ Cable Area	■ Shoaling Area	■ 0' and above
— Federal Navigation Center Line	□ Placement Area	● Shoalest Sounding**	■ 0' to -5'
— As-built Pipeline/Cable	⊗ Anchorage Area	☆ Beacon, General	■ -5' to -10'
..... Unconfirmed Pipeline/Cable	⊗ Obstruction Point	◆ Red Navigation Buoy	■ -10' to -20'
— Project Depth Contour	⊗ Wrecks-Submerged	◆ Green Navigation Buoy	■ -20' to -30'
			■ -30' to -35'
			■ -35' to -40'
			■ -40' to 45'
			■ -45' and below

Compass rose and scale bar.

Scale: 0, 500, 1,000, 1,500, 2,000, 2,500 Feet

LWRP: 0.2
Gage Reading: EM:3.7V:2.2 USED:3.4 NAVD
Sea Conditions: CHOP
Vessel Name: OB-167
Survey Type: CONDITION
Sounding Frequency***: HIGH

NOTES:
Horizontal Coordinate System:
North American Datum of 1983 (NAD83), projected to the State Plane Coordinate System (SPCS), Louisiana South Zone. Distance units in U.S. Survey Feet.
Vertical Datum:
Soundings are shown in feet and indicate depths below Low Water Reference Plane 2007 (NAVD).
Distances on the Mississippi River, above and below Head of Passes are shown at 1 mile intervals.
The location of navigation aids are base on and provided by the U.S. Coast Guard and USACE crew.
2017 Aerial Photography data source: NAIP, USDA-FSA-APFO Aerial Photography Field Office.
Reference is N.O.A. Navigation Chart No. 11370.
*** Shoalest Sounding per Quarter per Reach.
*** High frequency (200 kHz) survey data represents the first signal return at a sounding location and will include suspended solids, known as "fluff", if present. Low frequency (20 kHz) survey data normally penetrates through this "fluff" layer to depict elevations of consolidated bottom material. Low frequency accuracies may vary depending on channel conditions and fathometer settings.

Sheet Reference Number
91 of 97
Revision Number:
4.1-20191105