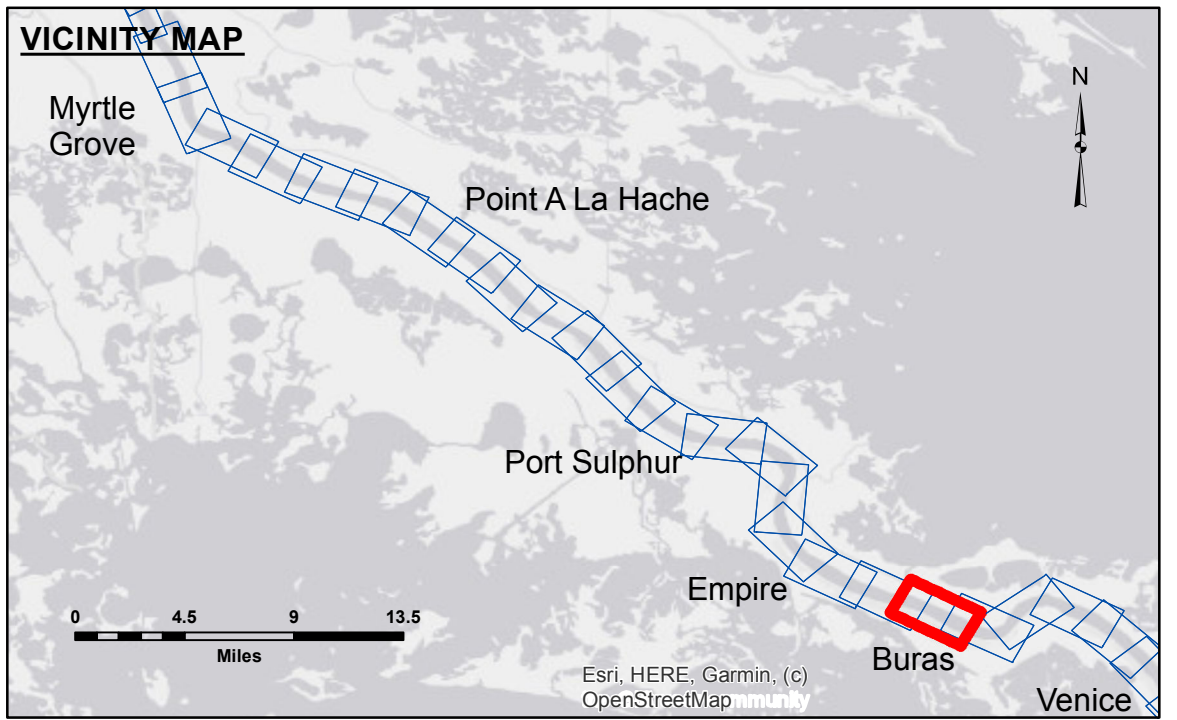


DISCLAIMER
 The data represented on this map is the result of a collection of data for a specific US Army Corps of Engineers project. The data is only valid for its intended use, and its accuracy is not guaranteed. The user is responsible for the results of their use. The application of the data for other than its intended purpose is at the user's risk. The US Army Corps of Engineers does not accept any responsibility for changes in the hydrographical conditions which develop after the date of the survey. The user is advised to check the current status of the data before using it for any purpose. The information depicted on this map represents the results of a survey conducted on the date indicated. The user is advised to check the current status of the data before using it for any purpose. The information depicted on this map represents the results of a survey conducted on the date indicated. The user is advised to check the current status of the data before using it for any purpose.

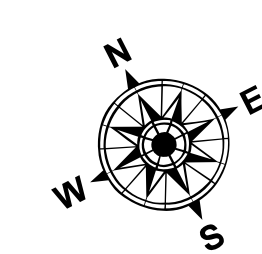
Submitted:	Surveyed By:	SPSR
Recommended:	Plotted By:	BD
Approved:	Chief Survey Section	Checked By:
	Chief Waterways Maintenance Section	AC

U.S. ARMY CORPS OF ENGINEERS
 NEW ORLEANS DISTRICT

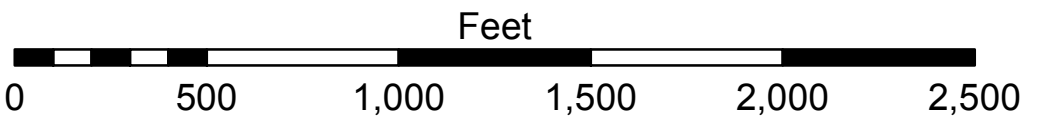
**MISSISSIPPI RIVER - B. R. TO GULF
 BURAS - SHEET 2**
 MD_92_BU2_20220331_CS_5X5
 31 March 2022



LEGEND		LEGEND		LEGEND	
--- Federal Navigation Channel	○ Cable Area	■ Shoaling Area	■ 0' and above	★ Beacon, General	■ 0' to -5'
— Federal Navigation Center Line	□ Placement Area	● Shoalest Sounding**	■ -5' to -10'	◆ Red Navigation Buoy	■ -10' to -20'
— As-built Pipeline/Cable	□ Anchorage Area	☆ Beacon, General	■ -10' to -20'	◆ Green Navigation Buoy	■ -20' to -30'
..... Unconfirmed Pipeline/Cable	⊗ Obstruction Point	◆ Red Navigation Buoy	■ -30' to -35'		■ -35' to -40'
— Project Depth Contour	⚓ Wrecks-Submerged	◆ Green Navigation Buoy	■ -40' to 45'		■ -45' to 50'
			■ -50' and below		



LWRP: N/A
 Gage Reading: VENICE: 2.1 NAVD AVG.
 Sea Conditions: CALM
 Vessel Name: OB-167
 Survey Type: CONDITION
 Sounding Frequency***: 400 KHZ



NOTES:
 Horizontal Coordinate System:
 North American Datum of 1983 (NAD83), projected to the State Plane Coordinate System (SPCS), Louisiana South Zone. Distance units in U.S. Survey Feet.
 Vertical Datum:
 Soundings are shown in feet and indicate depths below Low Water Reference Plane 2007 (NAVD).
 Distances on the Mississippi River, above and below Head of Passes are shown at 1 mile intervals.
 The location of navigation aids are based on and provided by the U.S. Coast Guard and USACE crew.
 2017 Aerial Photography data source: NAIP, USDA-FSA-APFO Aerial Photography Field Office.
 Reference is N.O.A. Navigation Chart No. 11370.
 ** Shoalest Sounding per Quarter per Reach.
 *** High frequency (200 kHz) survey data represents the first signal return at a sounding location and will include suspended solids, known as "fluff", if present. Low frequency (20 kHz) survey data normally penetrates through this "fluff" layer to depict elevations of consolidated bottom material. Low frequency accuracies may vary depending on channel conditions and bathymeter settings.

Sheet Reference Number
 92 of 97

Revision Number:
 4.2-20200420