

Accession: The United States Government furnishes these data and the recipient accepts and uses them with the express understanding that the data are not to be used for any purpose other than that for which they were originally prepared or implied concerning the accuracy, completeness, reliability, or suitability for any particular purpose of the recipient. The user is responsible for the results of any use of the data for other than that intended purpose.

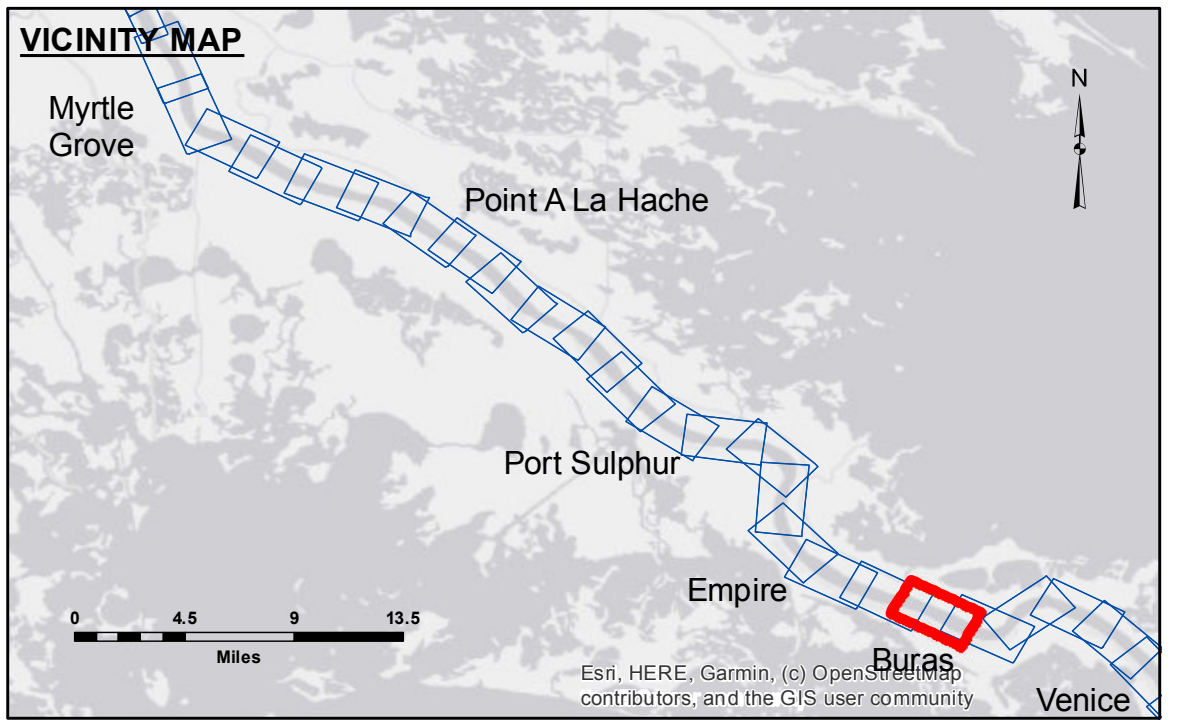
Disclaimer: Hydrographic survey data is subject to change rapidly due to several factors including but not limited to dredging, shoaling, and other changes in the hydrographical conditions which develop after the date of the survey. The Corps of Engineers does not assume any responsibility for changes in the hydrographical conditions which develop after the date of the survey. Recipients should not rely solely upon this information.

Submitted:	Surveyed By: JUC & MGF
Recommended: Chief, Survey Section	Plotted By: TSS
Approved: Chief, Waterways Maintenance Section	Checked By: MSK

**MISSISSIPPI RIVER - B. R. TO GULF
BURAS - SHEET 2
MD_92_BU2_20220617_CS
17 June 2022**

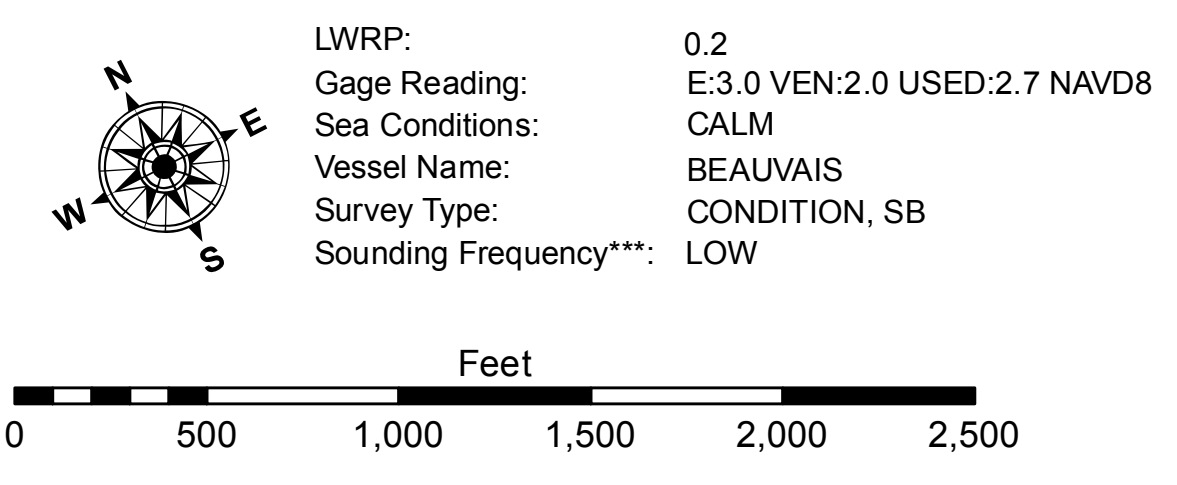
**Sheet
Reference
Number
92 of 97**

Revision Number:
4.2-20220617



LEGEND	
--- Federal Navigation Channel	○ Cable Area
— Federal Navigation Center Line	□ Placement Area
— As-built Pipeline/Cable	□ Anchorage Area
..... Unconfirmed Pipeline/Cable	⊗ Obstruction Point
— Project Depth Contour	⚓ Wrecks-Submerged
■ Shoaling Area	★ Beacon, General
● Shoalest Sounding**	◆ Red Navigation Buoy
☆ Beacon, General	◆ Green Navigation Buoy

0' and above	0.2
0' to -5'	E:3.0 VEN:2.0 USED:2.7 NAVD8
-5' to -10'	CALM
-10' to -20'	BEAUVAIS
-20' to -30'	CONDITION, SB
-30' to -35'	LOW
-35' to -40'	
-40' to 45'	
-45' to 50'	
-50' and below	



NOTES:
Horizontal Coordinate System:
North American Datum of 1983 (NAD83), projected to the State Plane Coordinate System (SPCS), Louisiana South Zone. Distance units in U.S. Survey Feet.

Vertical Datum:
Soundings are shown in feet and indicate depths below Low Water Reference Plane 2007 (NAVD).

Distances on the Mississippi River, above and below Head of Passes are shown at 1 mile intervals.

The location of navigation aids are base on and provided by the U.S. Coast Guard and USACE crew.

2017 Aerial Photography data source: NAIP, USDA-FSA-APFO Aerial Photography Field Office.

Reference is N.O.A. Navigation Chart No. 11370.

** Shoalest Sounding per Quarter per Reach.

*** High frequency (200 kHz) survey data represents the first signal return at a sounding location and will include suspended solids, known as "fluff", if present. Low frequency (20 kHz) survey data normally penetrates through this "fluff" layer to depict elevations of consolidated bottom material. Low frequency accuracies may vary depending on channel conditions and fathometer settings.