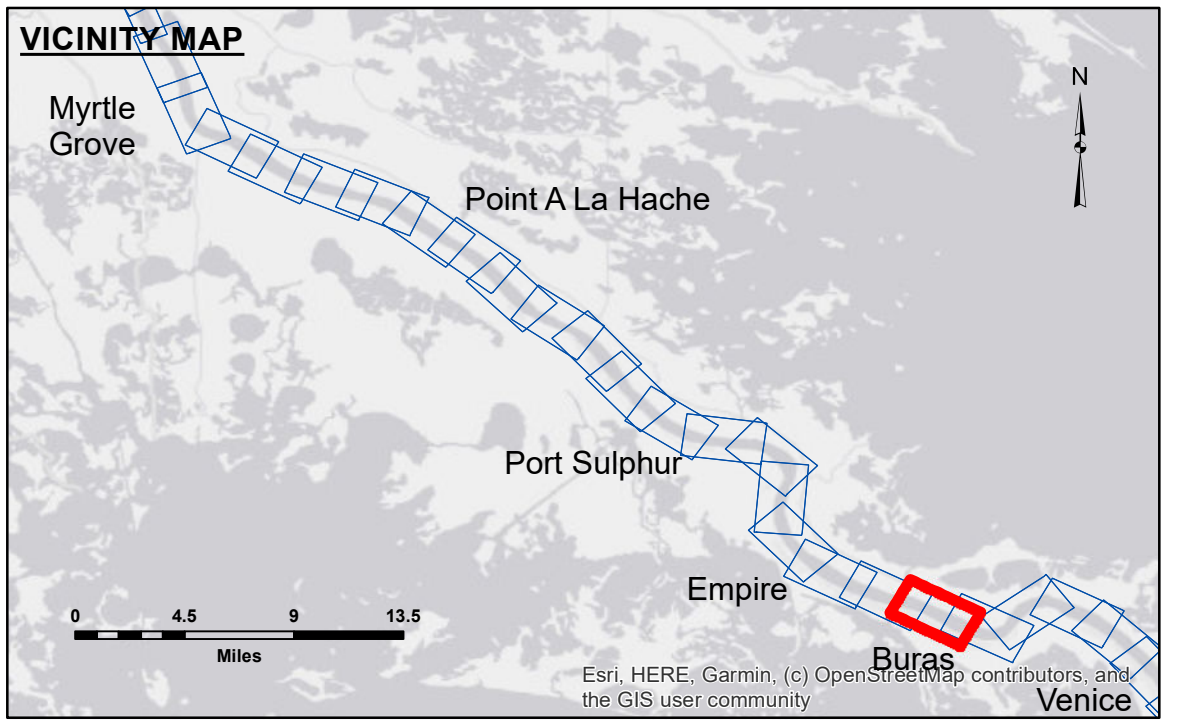


DISCLAIMER
 Access Conditions: The United States Government furnishes these data and the recipient accepts and uses them with the express understanding that the data are not to be used for any purpose other than that for which they were prepared, or implied concerning the accuracy, completeness, reliability, usability or suitability for any particular purpose of the recipient. The user is responsible for the accuracy, time and accuracy of the data. The application of the data for other than its intended purpose is at the user's risk.
 Data Constants: Hydrographic survey data is subject to change rapidly due to several factors including, but not limited to, changing hydrographic conditions, changes in the bathymetry of the river, and changes in the hydrographic conditions which develop after the date of the survey. The recipient may not transfer the data to other personnel without also transferring the Disclaimer. The information depicted on this map represents the results of a survey conducted on the Mississippi River. The data are not to be used for any purpose other than that for which they were prepared. The recipient is responsible for the accuracy, time and accuracy of the data. The application of the data for other than its intended purpose is at the user's risk.

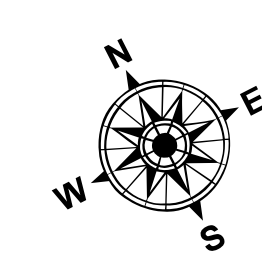
U.S. ARMY CORPS OF ENGINEERS NEW ORLEANS DISTRICT	
Submitted:	Surveyed By: JTB & DED
Recommended:	Plotted By: JTS
Approved:	Checked By: MSK

**MISSISSIPPI RIVER - B.R. TO GULF
 BURAS - SHEET 2
 MD_92_BU2_20230119_CS
 19 January 2023**

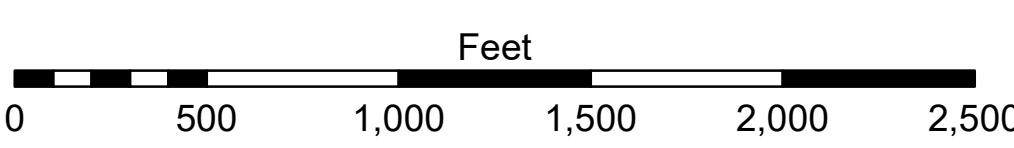


LEGEND

--- Federal Navigation Channel	○ Cable Area	■ Shoaling Area	■ 0' and above
— Federal Navigation Center Line	□ Placement Area	● Shoalest Sounding**	■ 0' to -5'
— As-built Pipeline/Cable	□ Anchorage Area	★ Beacon, General	■ -5' to -10'
..... Unconfirmed Pipeline/Cable	⊗ Obstruction Point	◆ Red Navigation Buoy	■ -10' to -20'
— Project Depth Contour	⚓ Wrecks-Submerged	◆ Green Navigation Buoy	■ -20' to -30'
			■ -30' to -35'
			■ -35' to -40'
			■ -40' to 45'
			■ -45' to 50'
			■ -50' and below



LWRP: N/A
 Gage Reading: E:1.1 VEN:0.7 USED 0.9 NAVD88 @ VENICE @ 10.0
 Sea Conditions: CALM
 Vessel Name: BLANCHARD
 Survey Type: CONDITION, SB
 Sounding Frequency***: LOW



NOTES:
 Horizontal Coordinate System: North American Datum of 1983 (NAD83), projected to the State Plane Vertical Coordinate System (SPCS), Louisiana South Zone. Distance units in U.S. Survey Feet.
 Vertical Datum: Soundings are shown in feet and indicate depths below Low Water Reference Plane 2007 (NAVD).
 Distances on the Mississippi River, above and below Head of Passes are shown at 1 mile intervals.
 The location of navigation aids are base on and provided by the U.S. Coast Guard and USACE crew.
 2017 Aerial Photography data source: NAIP, USDA-FSA-APFO Aerial Photography Field Office.
 Reference is N.O.A. Navigation Chart No. 11370.
 *** Shoalest Sounding per Quarter per Reach.
 *** High frequency (200 kHz) survey data represents the first signal return at a sounding location and will include suspended solids, known as "fluff", if present. Low frequency (20 kHz) survey data normally penetrates through this "fluff" layer to depict elevations of consolidated bottom material. Low frequency accuracies may vary depending on channel conditions and fathometer settings.

**Sheet Reference Number
 92 of 97**