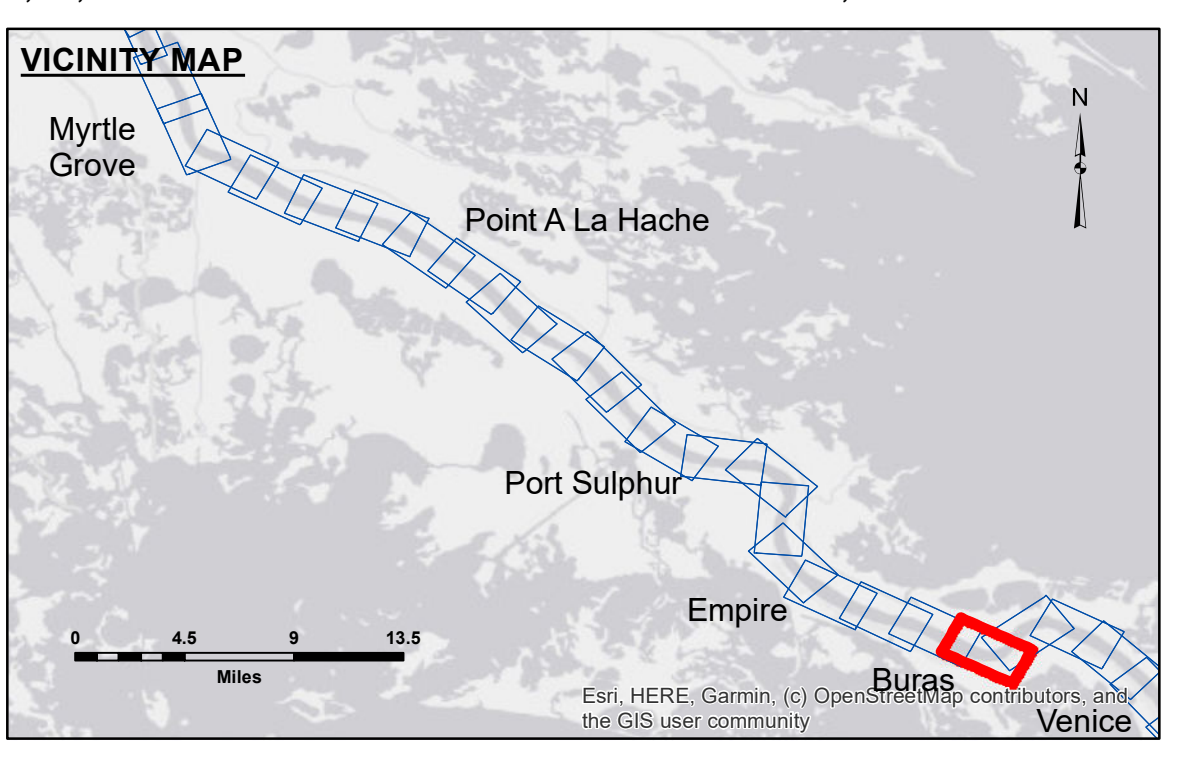


DISCLAIMER
 The information depicted on this map represents the results of a survey conducted by the U.S. Army Corps of Engineers. The user is responsible for the accuracy, completeness, and reliability of the data for its intended use. The user is not to be held liable for any damages or losses resulting from the use of this information. The U.S. Army Corps of Engineers does not warrant the accuracy or reliability of the information for any purpose other than that intended. The user is responsible for the accuracy, completeness, and reliability of the data for its intended use. The user is not to be held liable for any damages or losses resulting from the use of this information. The U.S. Army Corps of Engineers does not warrant the accuracy or reliability of the information for any purpose other than that intended.

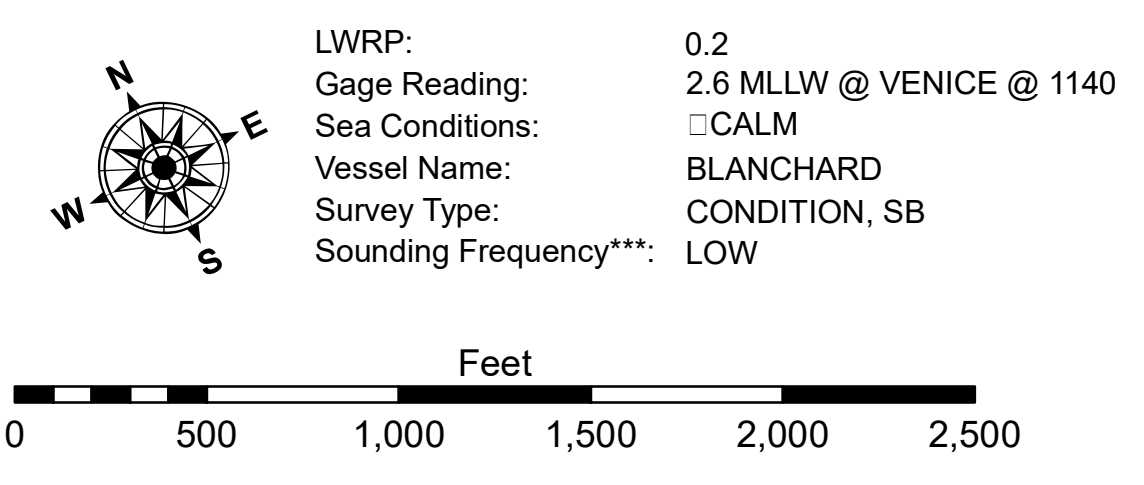
DISCLAIMER
 The information depicted on this map represents the results of a survey conducted by the U.S. Army Corps of Engineers. The user is responsible for the accuracy, completeness, and reliability of the data for its intended use. The user is not to be held liable for any damages or losses resulting from the use of this information. The U.S. Army Corps of Engineers does not warrant the accuracy or reliability of the information for any purpose other than that intended. The user is responsible for the accuracy, completeness, and reliability of the data for its intended use. The user is not to be held liable for any damages or losses resulting from the use of this information. The U.S. Army Corps of Engineers does not warrant the accuracy or reliability of the information for any purpose other than that intended.

| | | |
|--|--------------------------------------|--------------------|
| U.S. ARMY CORPS OF ENGINEERS NEW ORLEANS DISTRICT | | |
| Submitted: | Surveyed By: JTB & DED | Plotted By: TSS |
| Recommended: | Chief, Survey Section | Checked By: MSK |
| Approved: | Chief, Waterways Maintenance Section | |

**MISSISSIPPI RIVER - B. R. TO GULF
 BOLIVAR POINT
 MD_93_BVP_20220517_CS
 17 May 2022**



| LEGEND | | |
|----------------------------------|---------------------|-------------------------|
| --- Federal Navigation Channel | ○ Cable Area | ■ Shoaling Area |
| — Federal Navigation Center Line | □ Placement Area | ● Shoalest Sounding** |
| — As-built Pipeline/Cable | ⊗ Anchorage Area | ☆ Beacon, General |
| Unconfirmed Pipeline/Cable | ⊗ Obstruction Point | ◆ Red Navigation Buoy |
| — Project Depth Contour | ⚓ Wrecks-Submerged | ◆ Green Navigation Buoy |
| | | 0' and above |
| | | 0' to -5' |
| | | -5' to -10' |
| | | -10' to -20' |
| | | -20' to -30' |
| | | -30' to -35' |
| | | -35' to -40' |
| | | -40' to 45' |
| | | -45' to 50' |
| | | -50' and below |



NOTES:
 Horizontal Coordinate System:
 North American Datum of 1983 (NAD83), projected to the State Plane Coordinate System (SPCS), Louisiana South Zone. Distance units in U.S. Survey Feet.
 Vertical Datum:
 Soundings are shown in feet and indicate depths below Low Water Reference Plane 2007 (NAVD).
 Distances on the Mississippi River, above and below Head of Passes are shown at 1 mile intervals.
 The location of navigation aids are base on and provided by the U.S. Coast Guard and USACE crew.
 2010 Aerial Photography data source: NAIP, USDA-FSA-APFO Aerial Photography Field Office.
 Reference is N.O.A. Navigation Chart No. 11370.
 ** Shoalest Sounding per Quarter per Reach.
 *** High frequency (200 kHz) survey data represents the first signal return at a sounding location and will include suspended solids, known as "fluff", if present. Low frequency (20 kHz) survey data normally penetrates through this "fluff" layer to depict elevations of consolidated bottom material. Low frequency accuracies may vary depending on channel conditions and fathometer settings.

**Sheet Reference Number
 93 of 97**