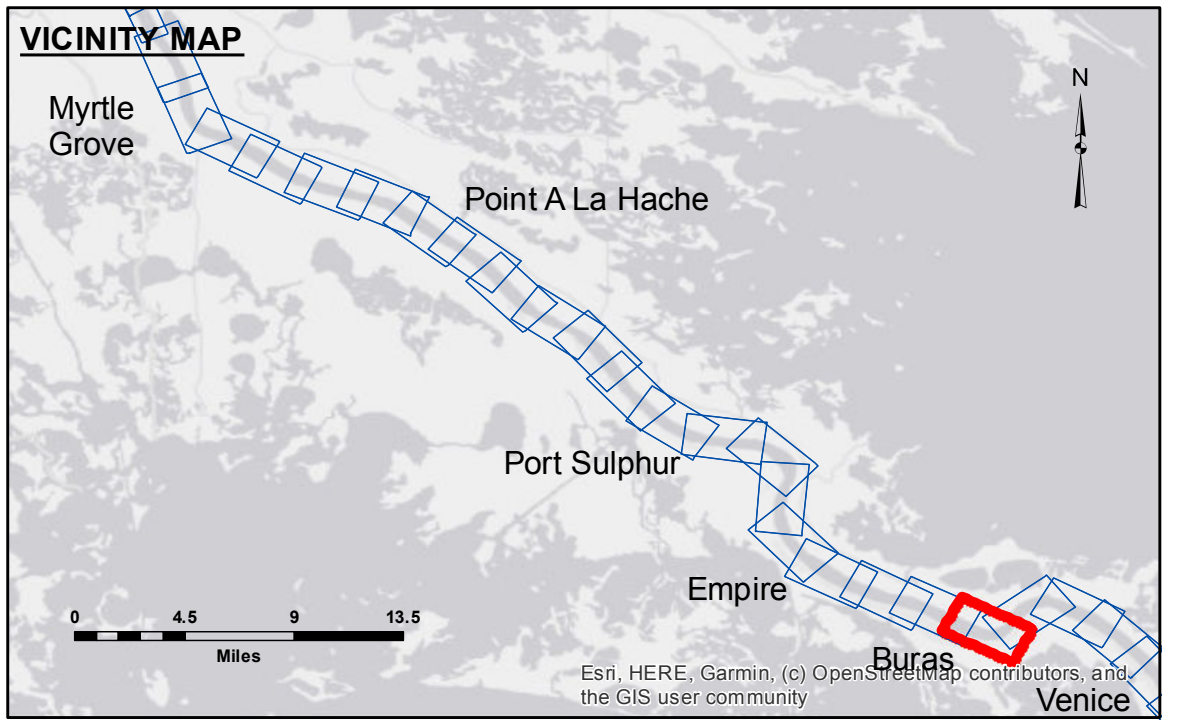


DISCLAIMER
The United States Government furnishes these data and the recipient accepts and uses them with the express understanding that the data are not warranted for any purpose other than the purpose for which they were collected. The user is responsible for the results of any use of the data for other than the intended purpose. The application of the data for other than the intended purpose may result in injury, death, or property damage. The user assumes all liability for any use of the data for other than the intended purpose. The information depicted on this map represents the results of a hydrographic survey conducted on the date of the survey. The information is not intended to represent the general condition existing at that time. The user assumes all liability for any use of the data for other than the intended purpose.

U.S. ARMY CORPS OF ENGINEERS NEW ORLEANS DISTRICT			
Submitted:	Surveyed By:	JUC & DED	
Recommended:	Plotted By:	TSS	
Approved:	Checked By:	MSK	

**MISSISSIPPI RIVER - B. R. TO GULF
BOLIVAR POINT
MD_93_BVP_20220907_CS
07 September 2022**

**Sheet
Reference
Number
93 of 97**



LEGEND

Federal Navigation Channel	Cable Area	Shoaling Area	0' and above
Federal Navigation Center Line	Placement Area	Shoalest Sounding**	0' to -5'
As-built Pipeline/Cable	Anchorage Area	Beacon, General	-5' to -10'
Unconfirmed Pipeline/Cable	Obstruction Point	Red Navigation Buoy	-10' to -20'
Project Depth Contour	Wrecks-Submerged	Green Navigation Buoy	-20' to -30'
			-30' to -35'
			-35' to -40'
			-40' to 45'
			-45' to 50'
			-50' and below

NOTES:
Horizontal Coordinate System:
North American Datum of 1983 (NAD83), projected to the State Plane Coordinate System (SPCS), Louisiana South Zone. Distance units in U.S. Survey Feet.
Vertical Datum:
Soundings are shown in feet and indicate depths below Low Water Reference Plane 2007 (NAVD).
Distances on the Mississippi River, above and below Head of Passes are shown at 1 mile intervals.
The location of navigation aids are based on and provided by the U.S. Coast Guard and USACE crew.
2010 Aerial Photography data source: NAIP, USDA-FSA-APFO Aerial Photography Field Office.
Reference is N.O.A. Navigation Chart No. 11370.
** Shoalest Sounding per Quarter per Reach.
*** High frequency (200 kHz) survey data represents the first signal return at a sounding location and will include suspended solids, known as "fluff", if present. Low frequency (20 kHz) survey data normally penetrates through this "fluff" layer to depict elevations of consolidated bottom material. Low frequency accuracies may vary depending on channel conditions and fathometer settings.

LWRP: 0.2
Gage Reading: 2.1 NAVD88 @ MILE 23 @ 0930
Sea Conditions: CALM
Vessel Name: VESSEL_NAME
Survey Type: CONDITION, SB
Sounding Frequency***: LOW