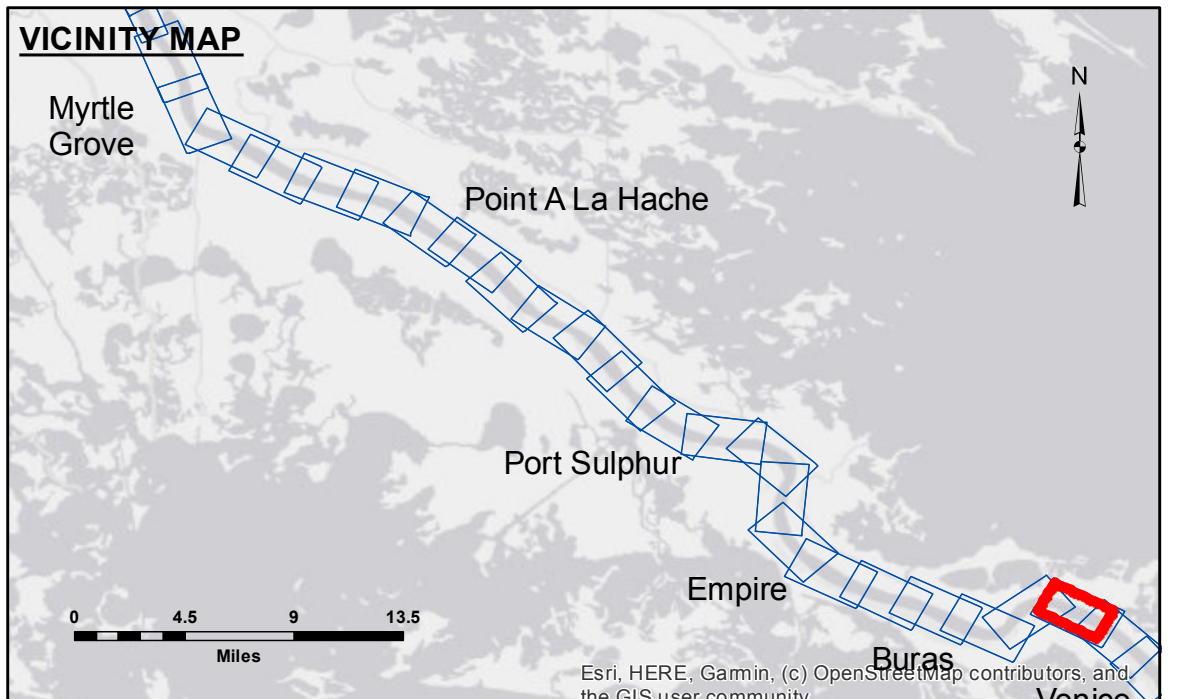


Accession: The United States Government furnishes these data and the recipient accepts and uses them with the express understanding that the data are not to be used for any purpose other than that for which they were originally prepared, and that the recipient is responsible for the accuracy, reliability, and timeliness of the data. The recipient is not to be held responsible for any errors or omissions in the data, or for any consequences arising from the use of the data. The recipient may not transfer the data to others without the written consent of the United States Government. The information depicted on this map represents the results of a survey conducted on the date indicated. The recipient is advised that the data are subject to change without notice. The recipient is responsible for the accuracy, reliability, and timeliness of the data. The recipient is not to be held responsible for any errors or omissions in the data, or for any consequences arising from the use of the data. The recipient may not transfer the data to others without the written consent of the United States Government.

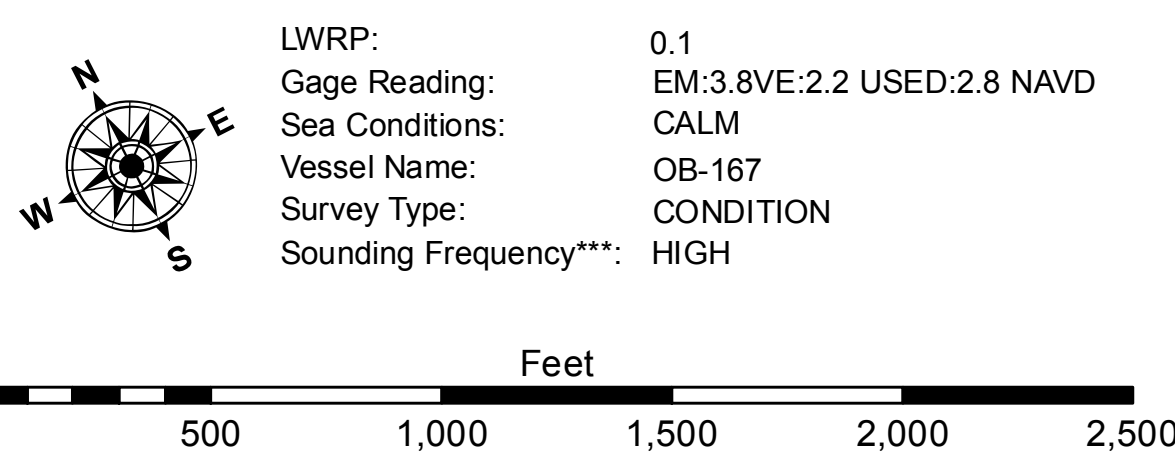
Submitted:	Reviewed By:	Submitted:	Reviewed By:
Recommended:	Checked By:	Recommended:	Checked By:
Approved:	Checked By:	Approved:	Checked By:

MISSISSIPPI RIVER - B.R. TO GULF
FORT JACKSON - SHEET 2
MD_95_FJ2X_20210512_CS
12 May 2021

Sheet Reference Number
95 of 97



LEGEND			
--- Federal Navigation Channel	○ Cable Area	■ Shoaling Area	■ 0' and above
— Federal Navigation Center Line	□ Placement Area	● Shoalest Sounding**	■ 0' to -5'
— As-built Pipeline/Cable	□ Anchorage Area	★ Beacon, General	■ -5' to -10'
..... Unconfirmed Pipeline/Cable	⊗ Obstruction Point	◆ Red Navigation Buoy	■ -10' to -20'
— Project Depth Contour	★ Wrecks-Submerged	◆ Green Navigation Buoy	■ -20' to -30'
			■ -30' to -35'
			■ -35' to -40'
			■ -40' to -45'
			■ -45' and below



NOTES:
Horizontal Coordinate System:
North American Datum of 1983 (NAD83), projected to the State Plane Coordinate System (SPCS), Louisiana South Zone. Distance units in U.S. Survey Feet.
Vertical Datum:
Soundings are shown in feet and indicate depths below Low Water Reference Plane 2007 (NAVD).
Distances on the Mississippi River, above and below Head of Passes are shown at 1 mile intervals.
The location of navigation aids are based on and provided by the U.S. Coast Guard and USACE crew.
2017 Aerial Photography data source: NAIP, USDA-FSA-APFO Aerial Photography Field Office.
Reference is N.O.A.A. Navigation Chart No. 11370.
** Shoalest Sounding per Quarter per Reach.
*** High frequency (200 kHz) survey data represents the first signal return at a sounding location and will include suspended solids, known as "fluff", if present. Low frequency (20 kHz) survey data normally penetrates through this "fluff" layer to depict elevations of consolidated bottom material. Low frequency accuracies may vary depending on channel conditions and bathymeter settings.