



**Distribution Liability:** The data represents the results of data collected by the U.S. Army Corps of Engineers. The Corps does not warrant the accuracy and reliability and indicates the general existing conditions. As such, the data is only valid for its intended use, content, time and accuracy. The user is responsible for the results and any application of the data for other than its intended purpose.

**Data Constraints:** Hydrographic survey data is subject to change rapidly due to several factors including but not limited to dredging activity and natural shoaling and scouring processes. The U.S. Army Corps of Engineers accepts no responsibility for changes in hydrographic data. This data is intended for U.S. Army Corps of Engineers internal use. Prudent mariners should not rely solely upon it.

**DISCLAIMER:** The United States Government furnishes these data and the recipient accepts and uses them with the express understanding that the US Government makes no warranties, expressed, implied or suitability for any particular purpose of the data, readability, usability or reliability concerning the accuracy, completeness, information and the data furnished. The United States shall be held harmless for any damages, claims, losses or expenses that may be made thereof. These data belong to the Government. Therefore the recipient fully agrees not to represent these data to anyone as other than Government provided data. The recipient may not transfer these data to others without also transferring this Disclaimer.

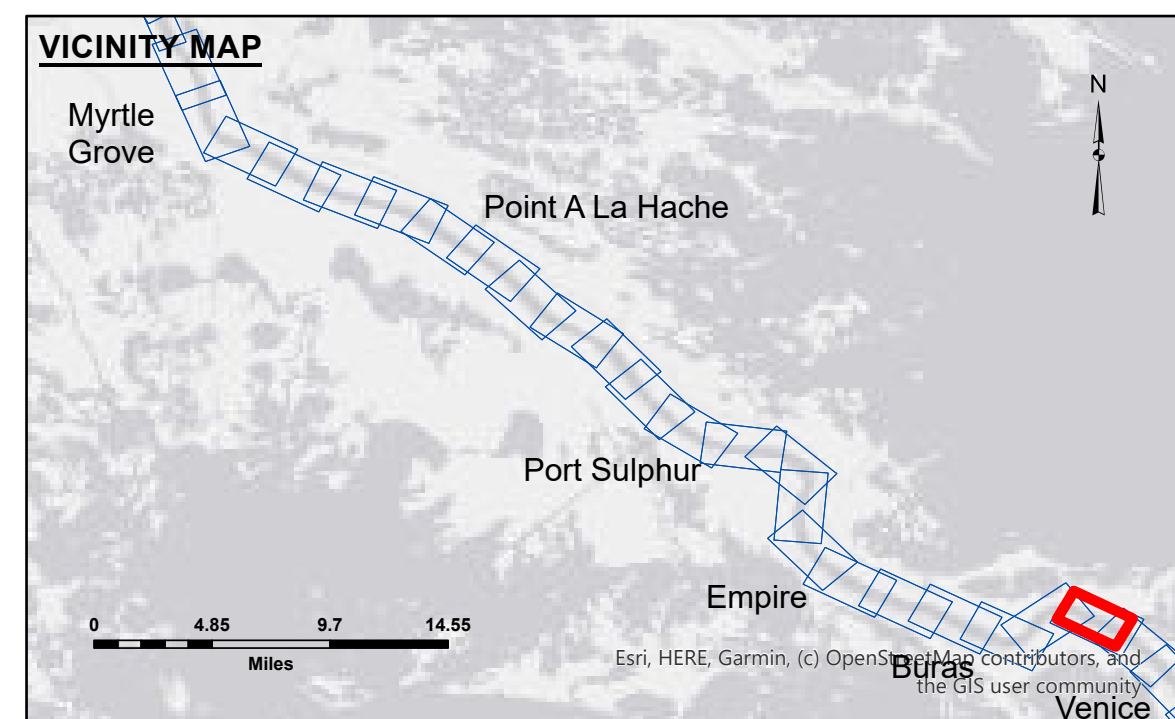
The information depicted on this map represents the results of a survey conducted on the date indicated and can only be considered to represent the general condition existing at that time.

U.S. ARMY CORPS OF ENGINEERS NEW ORLEANS DISTRICT	
Submitted _____	Reviewed By: JLB & LB
Recommended: _____ Chief, Survey Section	Plotted By: JH
Approved: _____ Chief, Waterways Maintenance Section	Checked By: JH

MISSISSIPPI RIVER - B.R. TO GULF  
FORT JACKSON - SHEET 2  
MD\_95\_FJ2X\_20250724\_CS  
24 July 2025

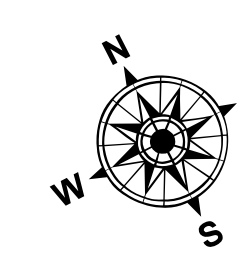
**Sheet  
Reference  
Number**  
**95 of 97**

Revision Number:



**LEGEND**

--- Federal Navigation Channel	○ Cable Area	■ Shoaling Area	0' and above
— Federal Navigation Center Line	□ Placement Area	● Shoalest Sounding**	0' to -5'
— As-built Pipeline/Cable	□ Anchorage Area	★ Beacon, General	-5' to -10'
..... Unconfirmed Pipeline/Cable	⊗ Obstruction Point	★ Beacon, General	-10' to -20'
— Project Depth Contour	✈ Wrecks-Submerged	★ Beacon, General	-20' to -30'
		★ Beacon, General	-30' to -35'
		★ Beacon, General	-35' to -40'
		★ Beacon, General	-40' to 45'
		★ Beacon, General	-45' to 50'
		★ Beacon, General	-50' and below



LWRP: 0.1  
Gage Reading: EM:2.4 VE:2.3 USED: 2.4 NAVD  
Sea Conditions: CALM  
Vessel Name: DUCARPE  
Survey Type: CONDITION, SB  
Sounding Frequency\*\*\*: LOW



**NOTES:**

Horizontal Coordinate System:  
North American Datum of 1983 (NAD83), projected to the State Plane  
Coordinate System (SPCS), Louisiana South Zone. Distance units in U.S. Survey Feet.

Vertical Datum:  
Soundings are shown in feet and include depths below Low Water Reference Plane 2007 (NAVD).

Distances on the Mississippi River, above and below Head of Passes are shown  
at 1 mile intervals.

The location of navigation aids are base on and provided by the U.S. Coast Guard and USACE crew.

2021 Aerial Photography data source: NAIP, USDA-FSA-APFO Aerial Photography Field Office.

Reference is N.O.A.A. Navigation Chart No. 11370.

\*\* Shoalest Sounding per Quarter per Reach.

\*\*\* High frequency (200 kHz) survey data represents the first signal return at a sounding  
location and will include suspended solids, known as "fluff", if present. Low frequency (20 kHz)  
survey data normally penetrates through this "fluff" layer to depict elevations of consolidated bottom  
material. Low frequency accuracies may vary depending on channel conditions and fathometer  
settings.