

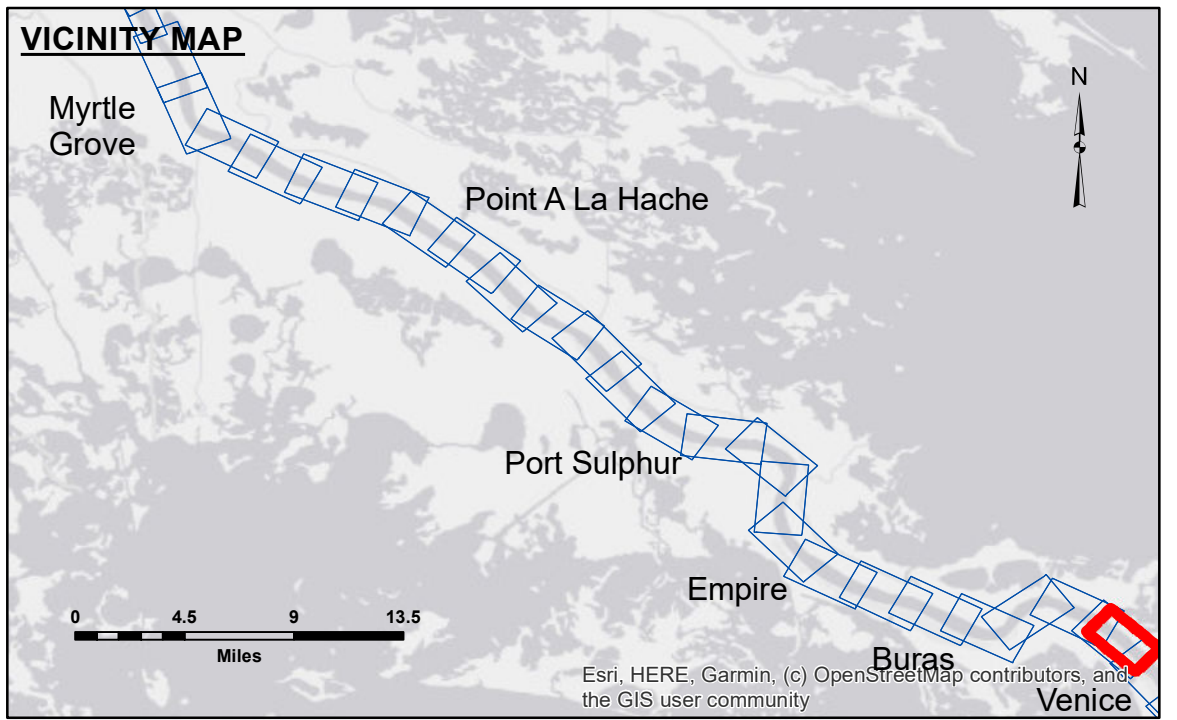
**Distribution Liability:** The data represents the results of data collection/processing for a specific US Army Corps of Engineers project. It is only valid for the intended use, control, time and accuracy specifications. The user is responsible for the results. The user must apply the application of the data for other than its intended purpose.

**Data Constraints:** Hydrographic survey data is subject to change rapidly due to several factors including but not limited to changing hydrographic conditions when developing after the date of the survey. The user must be aware of the date of the survey and the hydrographic conditions when developing after the date of the survey. The user must be aware of the date of the survey and the hydrographic conditions when developing after the date of the survey. The user must be aware of the date of the survey and the hydrographic conditions when developing after the date of the survey.

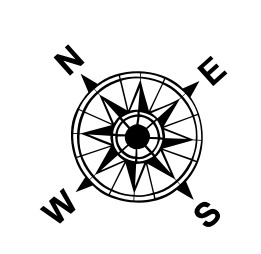
Submitted:	Surveyed By: LLB & JJC
Recommended:	Plotted By: TSS
Approved:	Checked By: MSK

U.S. ARMY CORPS OF ENGINEERS  
NEW ORLEANS DISTRICT

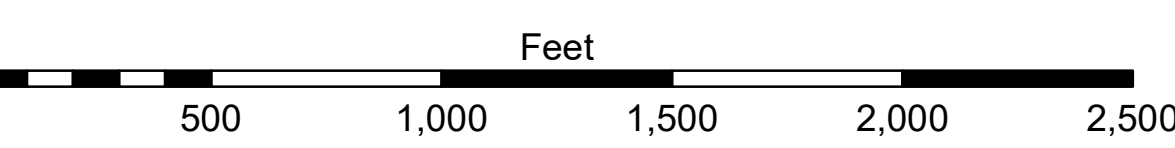
**MISSISSIPPI RIVER - B. R. TO GULF  
BOOTHVILLE**  
MD\_96\_BTXX\_20200603\_CS  
03 June 2020



LEGEND		0' and above	
--- Federal Navigation Channel	○ Cable Area	■ Shoaling Area	0' to -5'
— Federal Navigation Center Line	□ Placement Area	● Shoalest Sounding**	-5' to -10'
— As-built Pipeline/Cable	□ Anchorage Area	★ Beacon, General	-10' to -20'
..... Unconfirmed Pipeline/Cable	⊗ Obstruction Point	◆ Red Navigation Buoy	-20' to -30'
— Project Depth Contour	⚓ Wrecks-Submerged	◆ Green Navigation Buoy	-30' to -35'
			-35' to -40'
			-40' to 45'
			-45' and below



LWRP: N/A  
Gage Reading: 2.8 MLLW @ VENICE @ 1115  
Sea Conditions: CALM  
Vessel Name: OB-173  
Survey Type: CONDITION, SB  
Sounding Frequency\*\*\*: LOW



**NOTES:**  
Horizontal Coordinate System:  
North American Datum of 1983 (NAD83), projected to the State Plane Coordinate System (SPCS), Louisiana South Zone. Distance units in U.S. Survey Feet.

Vertical Datum:  
Soundings are shown in feet and indicate depths below Mean Lower Low Water.

Distances on the Mississippi River, above and below Head of Passes are shown at 1 mile intervals.

The location of navigation aids are based on and provided by the U.S. Coast Guard and USACE crew.

2010 Aerial Photography data source: NAIP, USDA-FSA-APFO Aerial Photography Field Office.

Reference is N.O.A. Navigation Chart No. 11370.

\*\*\* Shoalest Sounding per Quarter per Reach.

\*\*\* High frequency (200 kHz) survey data represents the first signal return at a sounding location and will include suspended solids, known as "fluff", if present. Low frequency (20 kHz) survey data normally penetrates through this "fluff" layer to depict elevations of consolidated bottom material. Low frequency accuracies may vary depending on channel conditions and fathometer settings.

**Sheet Reference Number**  
96 of 97