

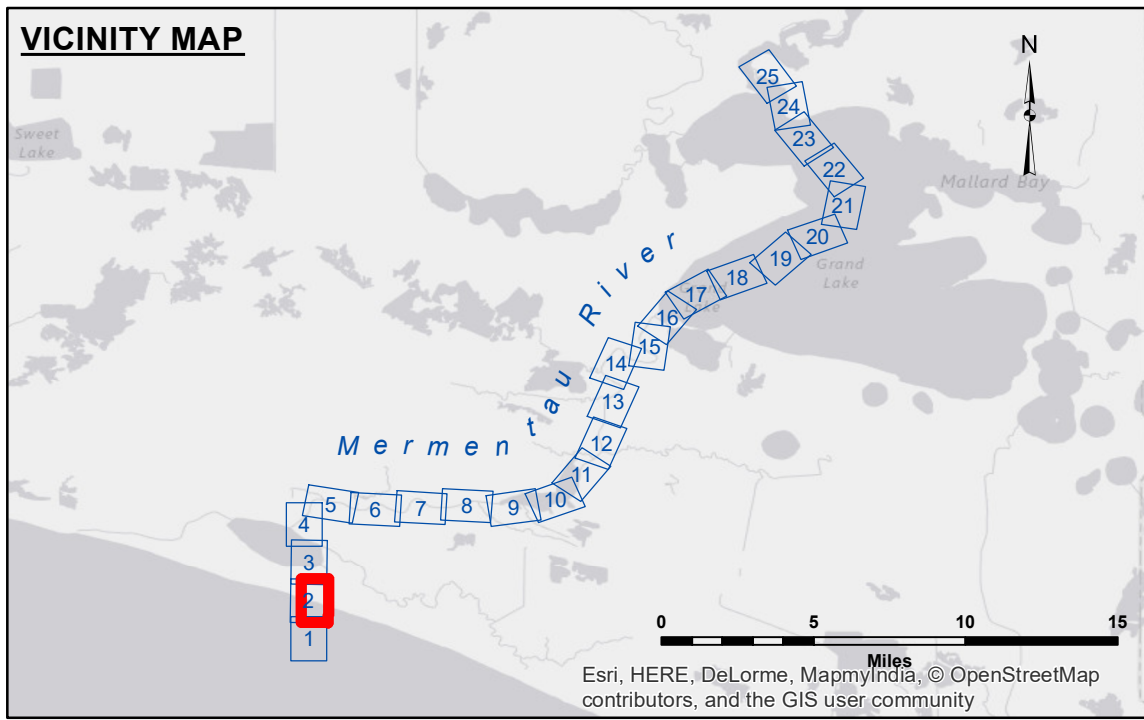
**Distribution Liability:** The data represents the results of data collection/processing for a specific US Army Corps of Engineers project. It is only valid for its intended use, content, time and accuracy specifications. The user is responsible for the results of the data. The application of the data for other than its intended purpose is at the user's risk. Data Constants: Hydrographic survey data is subject to change rapidly due to several factors including but not limited to changing hydrographic conditions when developing after the date of the survey. The US Army Corps of Engineers accepts no responsibility for changes in the hydrographic conditions when developing after the date of the survey. Internal use. Product maintainers should not rely solely upon this information.

**Access Constraints:** The United States Government furnishes these data and the recipient accepts and uses them with the express understanding that the data are not to be distributed, reproduced, expressed, or implied concerning the accuracy, completeness, readability, usability or suitability, for any particular purpose of the recipient. The recipient shall indemnify the United States Government under no liability whatsoever to any person by reason of any use made hereof. These data belong to the Government. Therefore the recipient may not transfer, copy, or otherwise disseminate these data to others without the prior written consent of the United States Government. The recipient may not transfer these data to others without the prior written consent of the United States Government. The information depicted on this map represents the results of a survey conducted on the date shown. The recipient is to be considered to represent the general condition existing at that time.

Submitted:	Surveyed By:	SR, JH
Recommended:	Plotted By:	BD
Approved:	Checked By:	AC

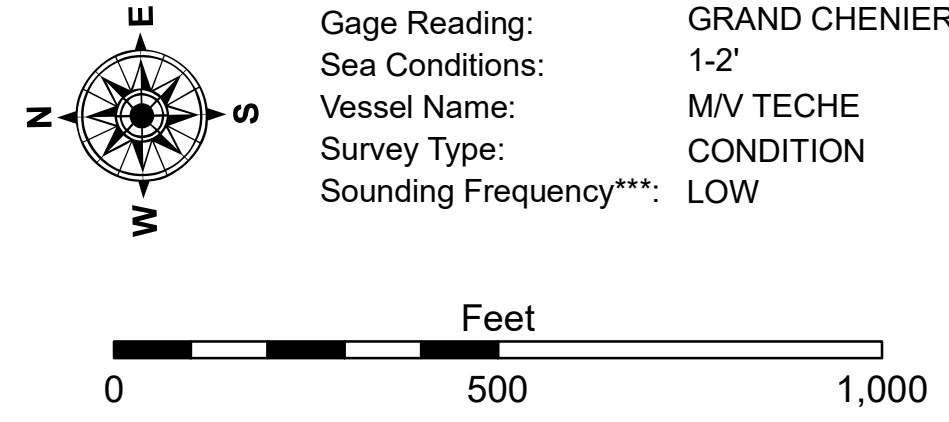
U.S. ARMY CORPS OF ENGINEERS  
NEW ORLEANS DISTRICT

**MERMENTAU RIVER  
BAR CHANNEL**  
MM\_02\_BAR\_20171023\_CS  
23 October 2017



**LEGEND**

--- Federal Navigation Channel	○ Cable Area	□ Borrow Area
— Federal Navigation Center Line	■ Placement Area	● Shoalest Sounding**
— As-built Pipeline/Cable	□ Anchorage Area	★ Beacon, General
..... Unconfirmed Pipeline/Cable	⊗ Obstruction Point	◆ Red Navigation Buoy
— Project Depth Contour	⚓ Wrecks-Submerged	◆ Green Navigation Buoy
		■ -15' and above
		□ -15' and below



**NOTES:**  
Horizontal Coordinate System: North American Datum of 1983 (NAD83), projected to the State Plane Coordinate System (SPCS), Louisiana South Zone. Distance units in U.S. Survey Feet.  
Vertical Datum: Soundings are shown in feet and indicate depths below Mean Low Gulf Datum (MLG).  
The location of navigation aids are base on and provided by the U.S. Coast Guard.  
2010 Aerial Photography data source: NAIP. 1998 DOQQ imagery shown in green from USGS.  
Reference is N.O.A. Navigation Chart No. 11344 and 11348.  
\*\* Shoalest Sounding per Quarter per Reach.  
\*\*\* High frequency (200 kHz) survey data represents the first signal return at a sounding location and will include suspended solids, known as "fluff", if present. Low frequency (20 kHz) survey data normally penetrates through this "fluff" layer to depict elevations of consolidated bottom material. Low frequency accuracies may vary depending on channel conditions and fathometer settings.

**Sheet Reference Number**  
2 of 25