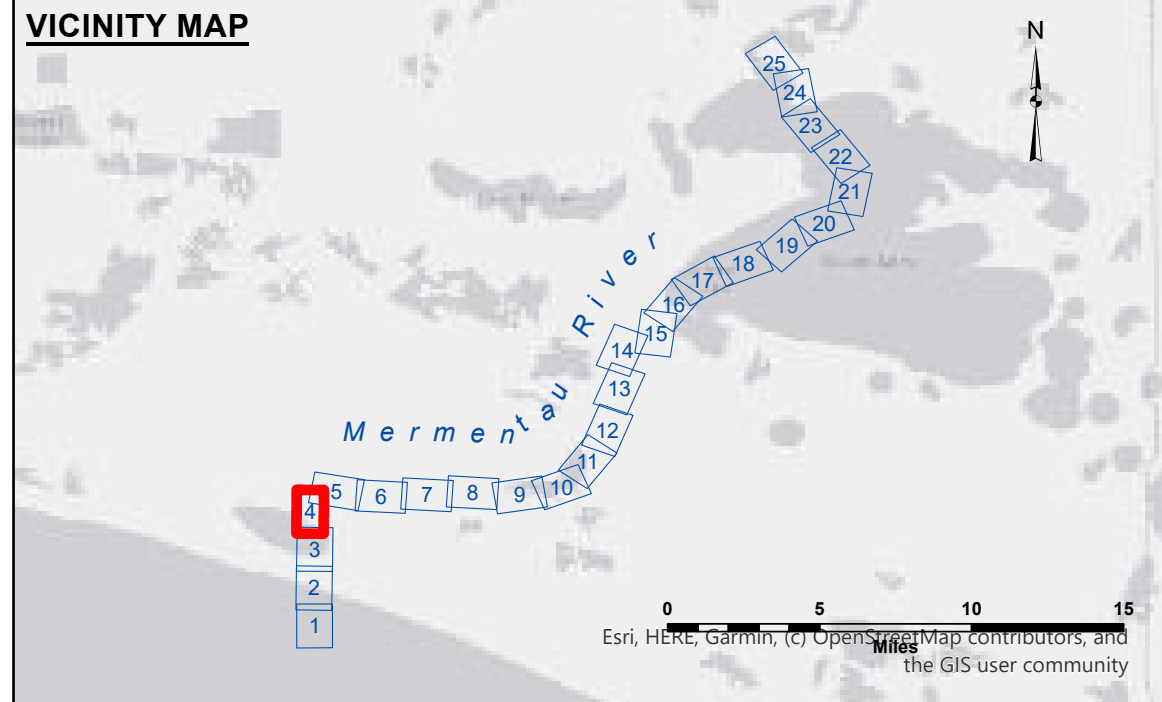


VICINITY MAP



LEGEND

--- Federal Navigation Channel

— Federal Navigation Center Line

— As-built Pipeline/Cable

..... Unconfirmed Pipeline/Cable

— Project Depth Contour

○ Cable Area

□ Placement Area

□ Anchorage Area

⊗ Obstruction Point

✶ Wrecks-Submerged

□ Borrow Area

● Shoalest Sounding**

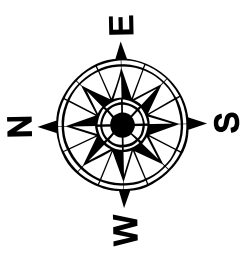
☆ Beacon, General

◆ Red Navigation Buoy

◆ Green Navigation Buoy

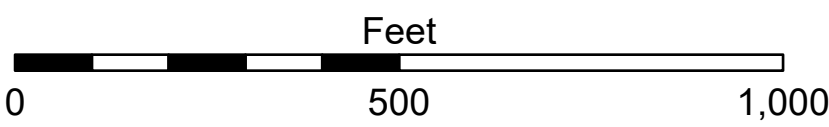
■ -15' and above

□ -15' and below



Gage Reading:
Sea Conditions:
Vessel Name:
Survey Type:
Sounding Frequency***: LOW

HWY 82 VRN: 4.37 MLG AVG.
CHOPPY
M/V TECHE
CONDITION



NOTES:

Horizontal Coordinate System:
North American Datum of 1983 (NAD83), projected to the State Plane
Coordinate System (SPCS), Louisiana South Zone. Distance units in U.S. Survey Feet.

Vertical Datum:
Soundings are shown in feet and indicate depths below Mean Low Gulf Datum (MLG).

The location of navigation aids are base on and provided by the U.S. Coast Guard.

2021 Aerial Photography data source: NAIP

Reference is N.O.A.A. Navigation Chart No. 11344 and 11348.

** Shoalest Sounding per Quarter per Reach.

*** High frequency (200 kHz) survey data represents the first signal return at a sounding location and will include suspended solids, known as "fluff", if present. Low frequency (20 kHz) survey data normally penetrates through this "fluff" layer to depict elevations of consolidated bottom material. Low frequency accuracies may vary depending on channel conditions and fathometer settings.

U.S. ARMY CORPS OF ENGINEERS NEW ORLEANS DISTRICT			
Submitted	Surveyed By: SPJS	Plotted By: BD	Checked By: AOJH
Recommended:	Chief Survey Section		
Approved:	Chief Waterways Maintenance Section		

MERGENTAUX RIVER
BAY CHANNEL
MM_04_BAY_20250501_CS
01 May 2025

Sheet
Reference
Number
4 of 25

**US Army Corps
of Engineers
District: CEMVN**

DISCLAIMER

The data presented in this report was collected and processed for a specific US Army Corps of Engineers activity and indicates the general existing conditions. As such, the data is not intended to be used for any other purpose or application. The user is responsible for the results of any of the application of the data for other than its intended purpose.

Data Comments: Hydrographic survey data is subject to change due to changing hydrographic conditions. The data is intended for use in active and natural ailing and routing processes. The U.S. Army Corps of Engineers is not responsible for the results of the hydrographic conditions which develop after the date of publication. This data is intended for U.S. Army Corps of Engineers internal use. Prudent mariners should not rely solely upon it.