

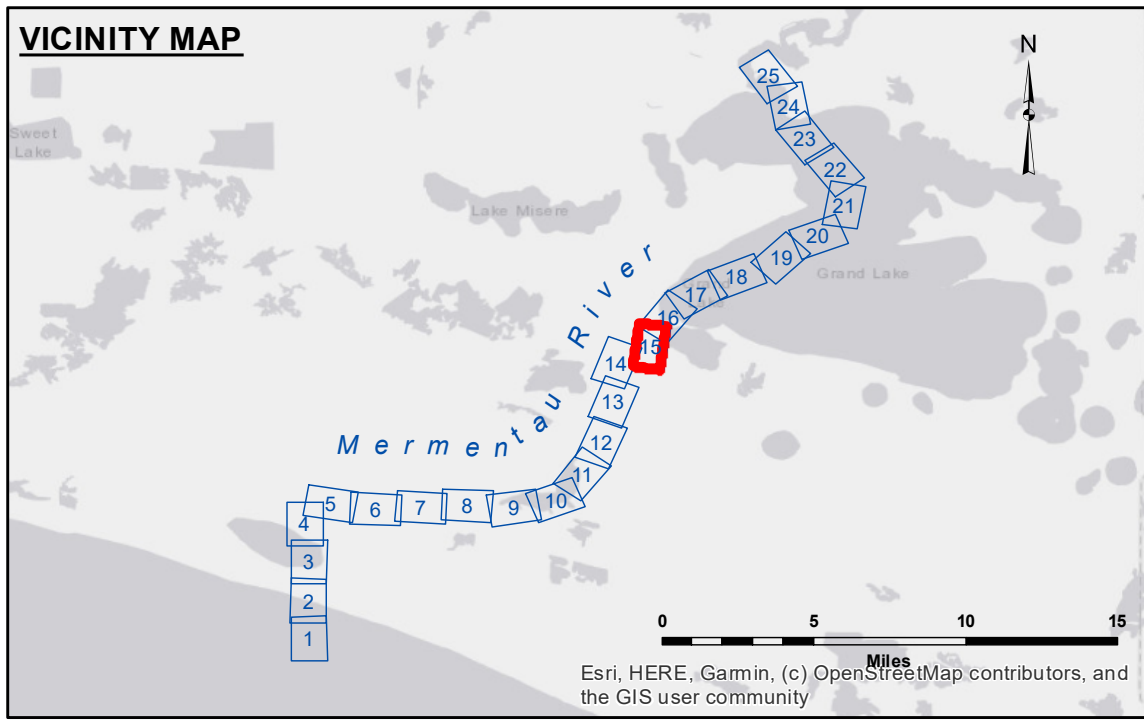
DISCLAIMER
 The United States Government furnishes these data and the recipient accepts and uses them with the express understanding that they are not to be used for any purpose other than that for which they were prepared, and that the Government makes no warranty, expressed or implied, concerning the accuracy, completeness, reliability, or suitability for any particular purpose of the information furnished. The user is responsible for the results obtained from the use of this information. The application of the data for other than its intended purpose is at the user's risk. The user is responsible for the results obtained from the use of this information. The user is responsible for the results obtained from the use of this information. The user is responsible for the results obtained from the use of this information.

U.S. ARMY CORPS OF ENGINEERS NEW ORLEANS DISTRICT		
Submitted:	Surveyed By: SPSR	Plotted By: BD
Recommended:	Checked By: AOJH	Checked By: AOJH
Approved:	Other Waterways Maintenance Section	

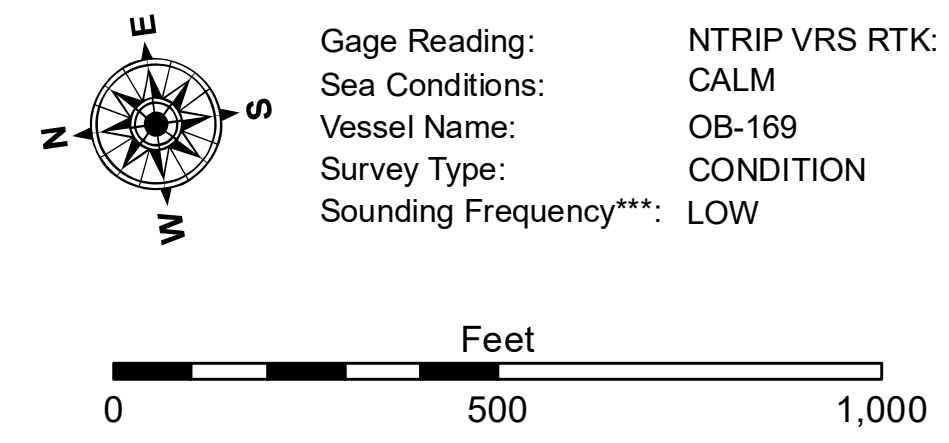
**MERMENTAU RIVER
 LOWER RIVER
 MM_15_LWR_20230328_CS
 28 March 2023**

**Sheet
 Reference
 Number
 15 of 25**

Revision Number:
4.2-202/064.20



LEGEND			
--- Federal Navigation Channel	○ Cable Area	□ Borrow Area	■ -15' and above
— Federal Navigation Center Line	□ Placement Area	● Shoalest Sounding**	□ -15' and below
— As-built Pipeline/Cable	□ Anchorage Area	★ Beacon, General	
..... Unconfirmed Pipeline/Cable	⊗ Obstruction Point	◆ Red Navigation Buoy	
— Project Depth Contour	⚓ Wrecks-Submerged	◆ Green Navigation Buoy	



NOTES:
 Horizontal Coordinate System: North American Datum of 1983 (NAD83), projected to the State Plane Coordinate System (SPCS), Louisiana South Zone. Distance units in U.S. Survey Feet.
 Vertical Datum: Soundings are shown in feet and indicate depths below Mean Low Gulf Datum (MLG).
 The location of navigation aids are based on and provided by the U.S. Coast Guard.
 2017 Aerial Photography data source: NAIP. 1998 DOQQ imagery shown in green from USGS.
 Reference is N.O.A.A. Navigation Chart No. 11344 and 11348.
 ** Shoalest Sounding per Quarter per Reach.
 *** High frequency (200 kHz) survey data represents the first signal return at a sounding location and will include suspended solids, known as "fluff", if present. Low frequency (20 kHz) survey data normally penetrates through this "fluff" layer to depict elevations of consolidated bottom material. Low frequency accuracies may vary depending on channel conditions and fathometer settings.