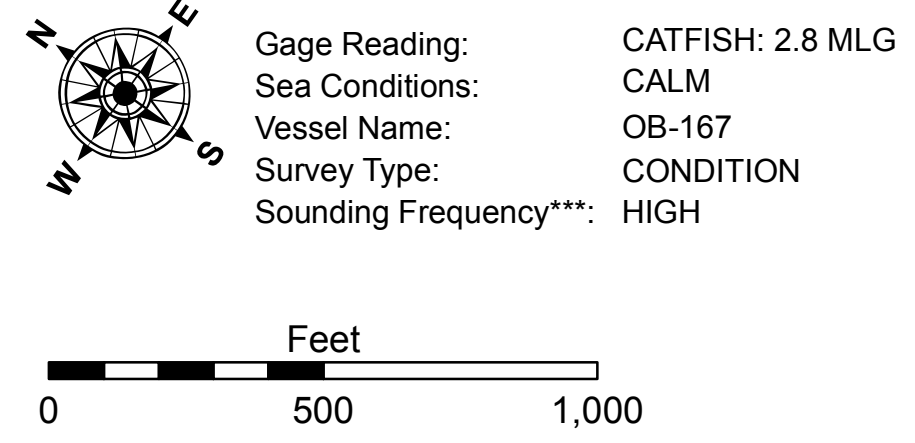


LEGEND

— Federal Navigation Channel	○ Cable Area	□ Borrow Area
— Federal Navigation Center Line	■ Placement Area	● Shoalest Sounding**
— As-built Pipeline/Cable	□ Anchorage Area	★ Beacon, General
..... Unconfirmed Pipeline/Cable	⊗ Obstruction Point	◆ Red Navigation Buoy
— Project Depth Contour	✶ Wrecks-Submerged	◆ Green Navigation Buoy
		■ -15' and above
		□ -15' and below



NOTES:

Horizontal Coordinate System:
 North American Datum of 1983 (NAD83), projected to the State Plane
 Coordinate System (SPCS), Louisiana South Zone. Distance units in U.S. Survey Feet.

Vertical Datum:
 Soundings are shown in feet and indicate depths below Mean Low Gulf Datum (MLG).

The location of navigation aids are base on and provided by the U.S. Coast Guard.

2010 Aerial Photography data source: NAIP, 1998 DOQQ imagery
 shown in green from USGS.

Reference is N.O.A.A. Navigation Chart No. 11344 and 11348.

** Shoalest Sounding per Quarter per Reach.

*** High frequency (200 kHz) survey data represents the first signal return at a sounding location and will include suspended solids, known as "fluff", if present. Low frequency (20 kHz) survey data normally penetrates through this "fluff" layer to depict elevations of consolidated bottom material. Low frequency accuracies may vary depending on channel conditions and fathometer settings.



DISCLAIMER

The information depicted on this map represents the results of a survey conducted by the U.S. Army Corps of Engineers, and is provided for informational purposes only. The user is responsible for the accuracy, completeness, and reliability of the information for their intended use. The Corps of Engineers does not warrant or guarantee the accuracy or completeness of the information for any purpose other than that intended by the Corps of Engineers. The Corps of Engineers does not accept responsibility for changes in the hydrographical conditions which develop after the date of the survey. The Corps of Engineers does not accept responsibility for changes in the hydrographical conditions which develop after the date of the survey. The Corps of Engineers does not accept responsibility for changes in the hydrographical conditions which develop after the date of the survey.

U.S. ARMY CORPS OF ENGINEERS
 NEW ORLEANS DISTRICT

Submitted:	Surveyed By: SP-PM
Recommended: Chief Survey Section	Plotted By: BIT
Approved:	Checked By: TAF

**MERMENTAU RIVER
 UPPER RIVER
 MM_22_UPR_20141009
 09 October 2014**

**Sheet Reference Number
 22 of 25**