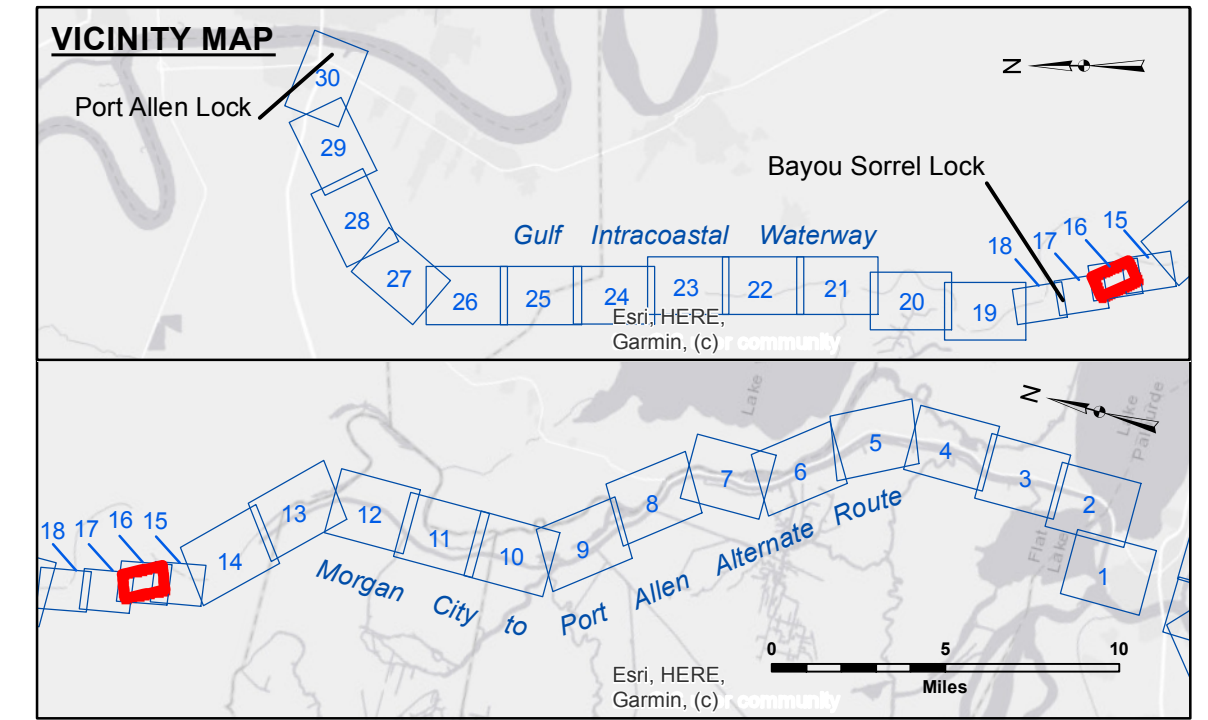
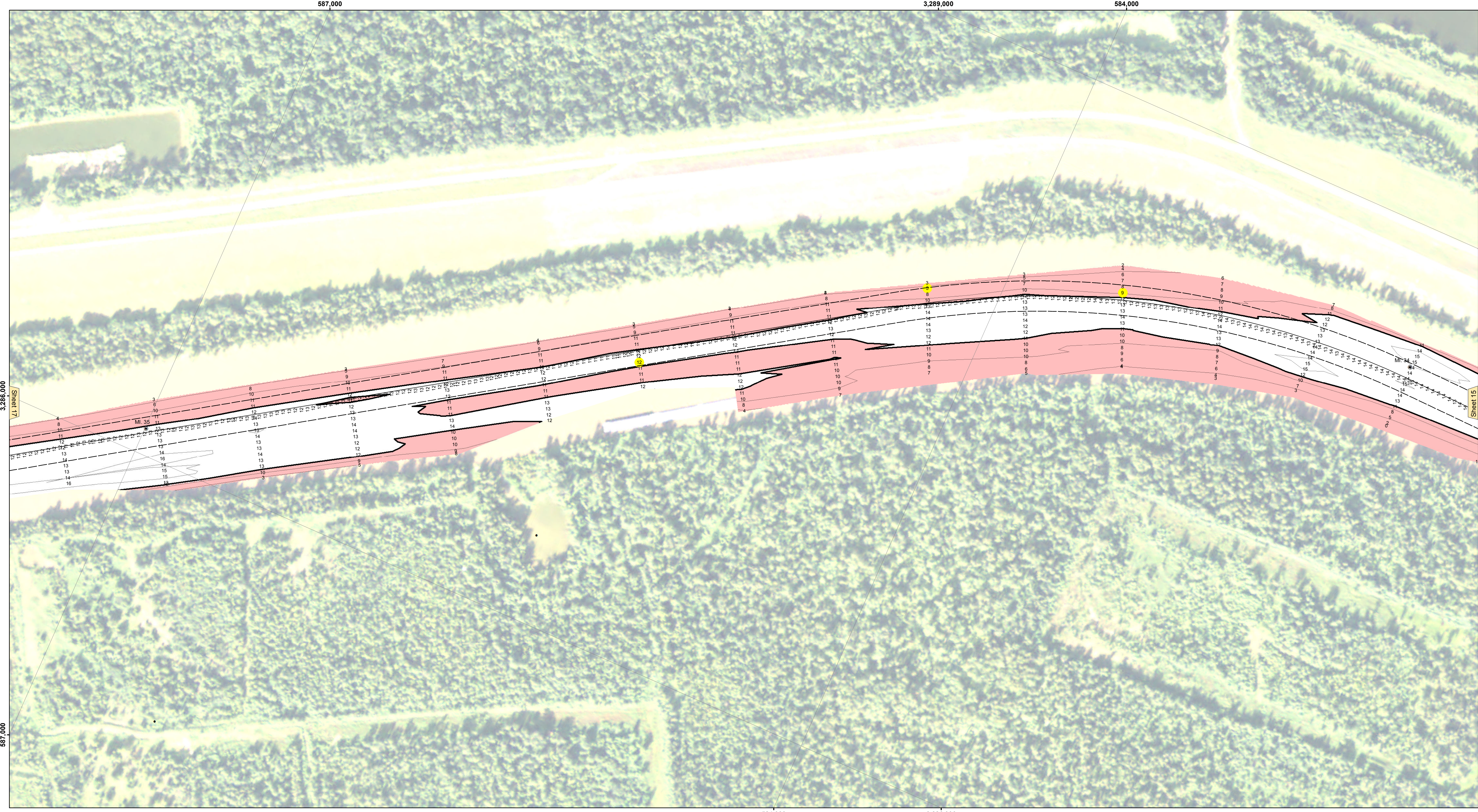
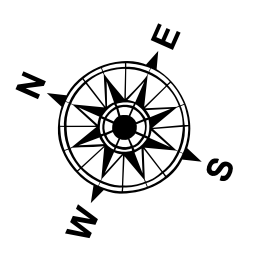




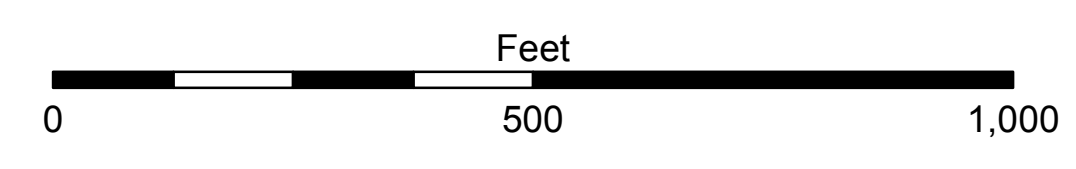
**DISCLAIMER**  
 The United States Government furnishes these data and the recipient accepts and uses them with the express understanding that the data are not intended for navigation purposes. It is only valid for its intended use, content, time and accuracy specifications. The user is responsible for the results of any use of the data for other than its intended purpose.  
 Distribution Liability: The data represents the results of data collection/processing for a specific US Army Corps of Engineers project. The user is responsible for the results of any use of the data for other than its intended purpose.  
 Data Constants: Hydrographic survey data is subject to change due to several factors including but not limited to dredging, shoaling, and other factors. The user is responsible for the results of any use of the data for other than its intended purpose.  
 The information depicted on this map represents the results of a survey conducted on the date of the survey. It is not intended to represent the general condition existing at that time.



LEGEND			
--- Federal Navigation Channel	○ Cable Area	□ Borrow Area	■ -12' and above
— Federal Navigation Center Line	■ Placement Area	● Shoalest Sounding**	□ -12' and below
— As-built Pipeline/Cable	□ Anchorage Area	★ Beacon, General	
..... Unconfirmed Pipeline/Cable	⊗ Obstruction Point	◆ Red Navigation Buoy	
— Project Depth Contour	⚓ Wrecks-Submerged	◆ Green Navigation Buoy	



Gage Reading: BAYOU SORREL: 4.8 MLG  
 Sea Conditions: CALM  
 Vessel Name: OB-189  
 Survey Type: CS  
 Sounding Frequency\*\*\*: HIGH



**NOTES:**  
 Horizontal Coordinate System: North American Datum of 1983 (NAD83), projected to the State Plane Coordinate System (SPCS), Louisiana South Zone. Distance units in U.S. Survey Feet.  
 Vertical Datum: Soundings are shown in feet and indicate depths below Mean Low Gulf Datum (MLG).  
 Distances on the G.I.W.W. are shown at 1 mile intervals.  
 The location of navigation aids are base on and provided by the U.S. Coast Guard and USACE survey crews.  
 2010 Aerial Photography data source: NAIP  
 Reference is N.O.A. Navigation Chart No. 11354.  
 \*\* Shoalest Sounding per Quarter per Reach.  
 \*\*\* High frequency (200 kHz) survey data represents the first signal return at a sounding location and will include suspended solids, known as "fluff", if present. Low frequency (20 kHz) survey data normally penetrates through this "fluff" layer to depict elevations of consolidated bottom material. Low frequency accuracies may vary depending on channel conditions and fathometer settings.

U.S. ARMY CORPS OF ENGINEERS NEW ORLEANS DISTRICT	
Submitted:	Surveyed By: RYLAND/SIMMONS
Recommended:	Plotted By: BD
Approved:	Checked By: AC

**GULF INTRACOASTAL WATERWAY**  
**MORGAN CITY TO PORT ALLEN ROUTE**  
 MP\_16\_BSO\_20211109\_CS  
 09 November 2021

**Sheet Reference Number**  
 16 of 30