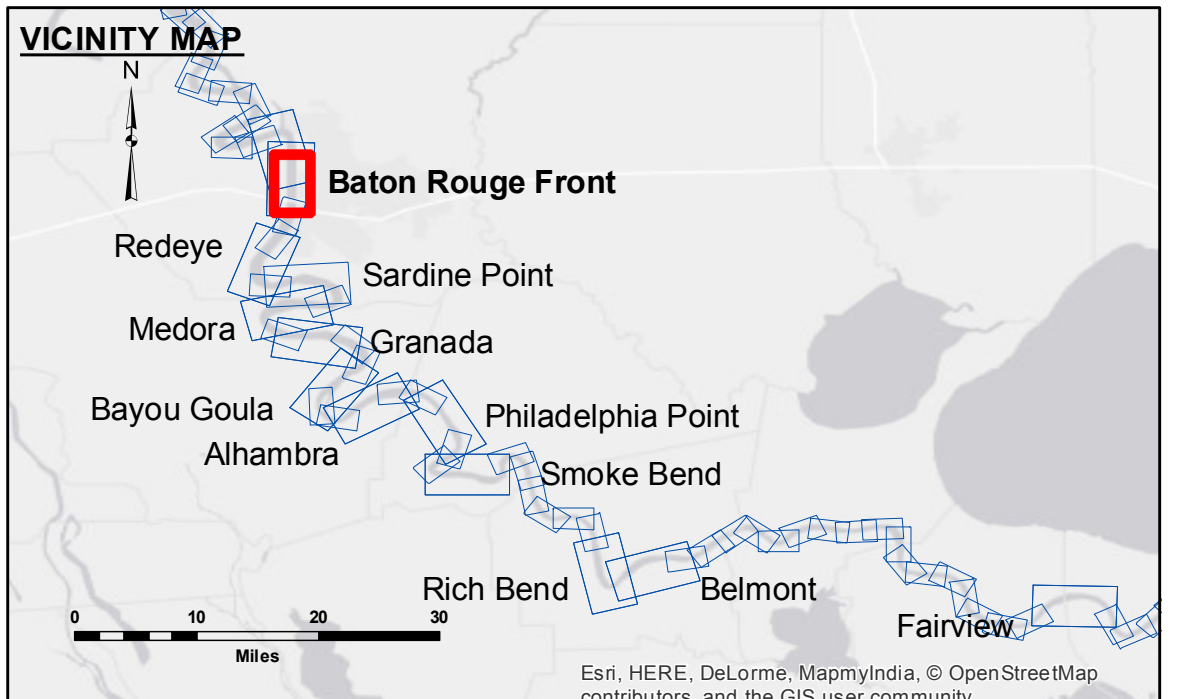


ACCESS NOTES
 Access Restrictions: The United States Government furnishes these data and the recipient accepts and uses them with the express understanding that they are for official use only and are not to be distributed, reproduced, or used for any purpose other than that for which they were prepared. The user is responsible for the accuracy, completeness, reliability, usability or suitability for any particular purpose of the information. These data are provided to the recipient under no liability whatsoever to any person by reason of any use made thereof. These data belong to the Government. Therefore the recipient may not transfer, disseminate, or otherwise use these data for purposes other than those for which they were provided. The recipient may not transfer these data to others without also transferring the Disclaimer. The information depicted on the map represents the results of a survey conducted on the map date. The user is responsible for the accuracy of the information. Product maintainers should not rely solely upon this information.

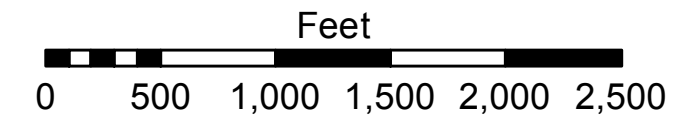
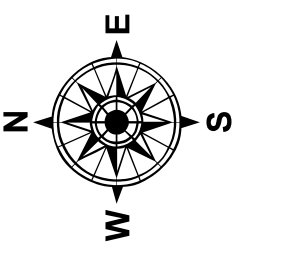
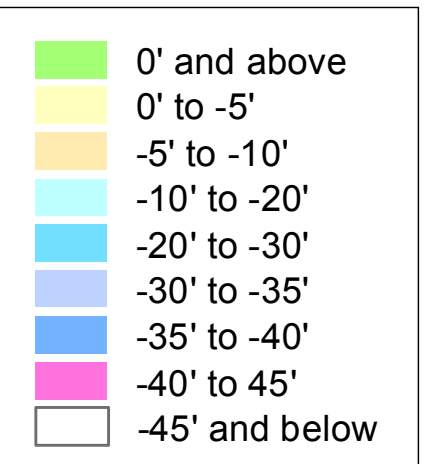
Submitted:	Checked By:
Recommended:	MSK
Surveyed By:	DS, JH
Plotted By:	BITD
Checked By:	MSK

U.S. ARMY CORPS OF ENGINEERS
 NEW ORLEANS DISTRICT

MISSISSIPPI RIVER - B.R. TO GULF
BATON ROUGE FRONT RECON
 MR_01_BRF_20160321
 21 March 2016



LEGEND	
--- Federal Navigation Channel	● Cable Area
— Federal Navigation Center Line	■ Placement Area
— As-built Pipeline/Cable	□ Anchorage Area
..... Unconfirmed Pipeline/Cable	⊗ Obstruction Point
— Project Depth Contour	✶ Wrecks-Submerged
□ Borrow Area	★ Beacon, General
● Shoalest Sounding**	◆ Red Navigation Buoy
★ Beacon, General	◆ Green Navigation Buoy



LWRP: 2.8
 Gage Reading: BR:38.4 D:27.98 USED:38.8 NGVD
 Sea Conditions: ROUGH
 Vessel Name: M/V 189
 Survey Type: CONTROL
 Sounding Frequency***: HIGH

NOTES:
 Horizontal Coordinate System:
 North American Datum of 1983 (NAD83), projected to the State Plane Coordinate System (SPCS), Louisiana South Zone. Distance units in U.S. Survey Feet.
 Vertical Datum:
 Soundings are shown in feet and indicate depths below Low Water Reference Plane 2007 (NGVD).
 Distances on the Mississippi River, above and below Head of Passes are shown at 1 mile intervals.
 The location of navigation aids are based on and provided by the U.S. Coast Guard and USACE crew.
 2010 Aerial Photography data source: NAIP, USDA-FSA-APFO Aerial Photography Field Office.
 Reference is N.O.A. Navigation Chart No. 11370.
 ** Shoalest Sounding per Quarter per Reach.
 *** High frequency (200 kHz) survey data represents the first signal return at a sounding location and will include suspended solids, known as "fluff", if present. Low frequency (20 kHz) survey data normally penetrates through this "fluff" layer to depict elevations of consolidated bottom material. Low frequency accuracies may vary depending on channel conditions and fathometer settings.

Sheet Reference Number
 1 of 97