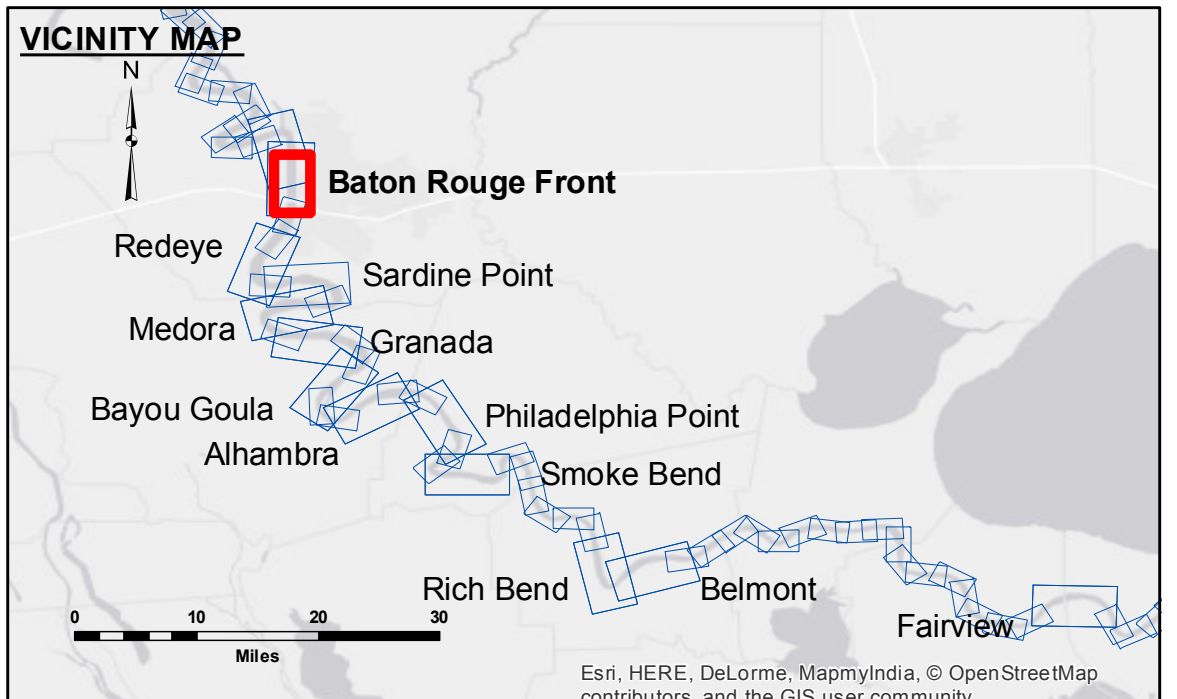
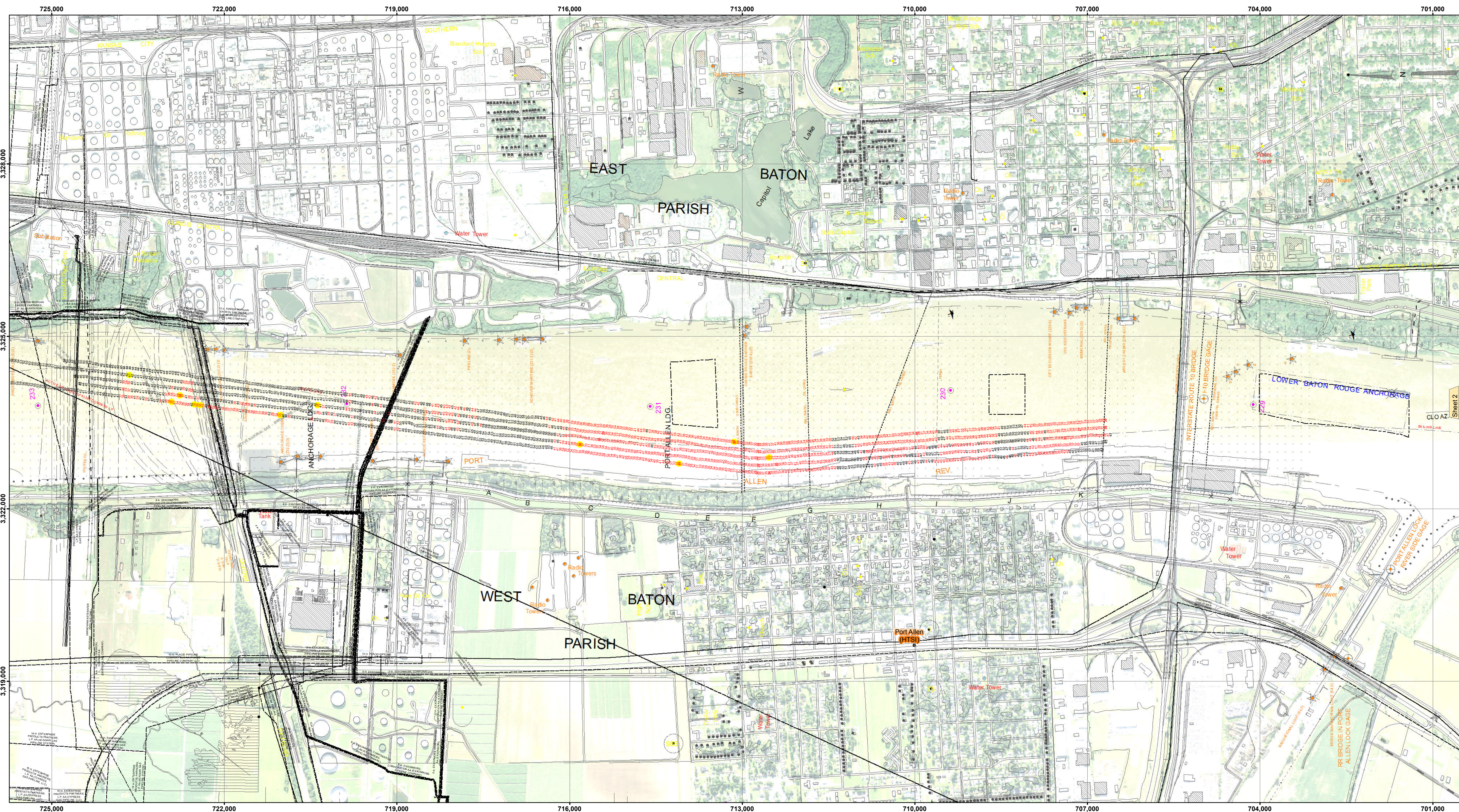
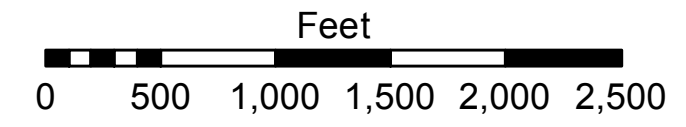
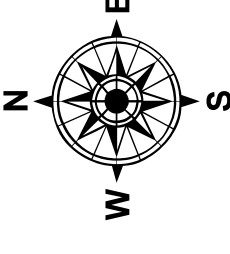




Distribution Liability: The data represents the results of data collection processing for a specific US Army Corps of Engineers project. It is only valid for its intended use, control, time and accuracy specifications. The user is responsible for the results. The application of the data for other than its intended purpose. Data Constraints: Hydrographic survey data is subject to change rapidly due to several factors including but not limited to dredging, sedimentation, and channel shifts. The user should not rely on the data for navigation purposes. The information depicted on the map represents the results of a hydrographic survey conducted on the date of the survey and is not intended to represent the general condition existing at that time.



LEGEND		
— Federal Navigation Channel	○ Cable Area	█ 0' and above
— Federal Navigation Center Line	▭ Placement Area	█ 0' to -5'
— As-built Pipeline/Cable	○ Anchorage Area	█ -5' to -10'
..... Unconfirmed Pipeline/Cable	✕ Obstruction Point	█ -10' to -20'
— Project Depth Contour	✙ Wrecks-Submerged	█ -20' to -30'
	★ Beacon, General	█ -30' to -35'
	◆ Red Navigation Buoy	█ -35' to -40'
	◆ Green Navigation Buoy	█ -40' to 45'
	█ Borrow Area	█ -45' and below
	● Shoalest Sounding**	



LWRP: 2.8
 Gage Reading: BR 31.6D:21.9 USED:32.0 NGVD
 Sea Conditions: SLIGHT CHOP
 Vessel Name: LAFORCHE
 Survey Type: RECON
 Sounding Frequency***: HIGH

NOTES:
 Horizontal Coordinate System: North American Datum of 1983 (NAD83), projected to the State Plane Coordinate System (SPCS), Louisiana South Zone. Distance units in U.S. Survey Feet.
 Vertical Datum: Soundings are shown in feet and indicate depths below Low Water Reference Plane 2007 (NGVD).
 Distances on the Mississippi River, above and below Head of Passes are shown at 1 mile intervals.
 The location of navigation aids are based on and provided by the U.S. Coast Guard and USACE crew.
 2010 Aerial Photography data source: NAIP, USDA-FSA-APFO Aerial Photography Field Office.
 Reference is N.O.A. Navigation Chart No. 11370.
 *** Shoalest Sounding per Quarter per Reach.
 High frequency (200 kHz) survey data represents the first signal return at a sounding location and will include suspended solids, known as "fluff", if present. Low frequency (20 kHz) survey data normally penetrates through this "fluff" layer to depict elevations of consolidated bottom material. Low frequency accuracies may vary depending on channel conditions and fathometer settings.

U.S. ARMY CORPERS OF ENGINEERS
 NEW ORLEANS DISTRICT
 Submitted: _____
 Recommended: _____
 Approved: _____
 Surveyed By: DJS/SPS
 Plotted By: AO
 Checked By: MK

MISSISSIPPI RIVER - B.R. TO GULF
 BATON ROUGE FRONT RECON
 MR_01_BRF_20160518
 18 May 2016

Sheet Reference Number
 1 of 97

Revision Number: 3.8-0-20150202