

**Distribution Liability:** The data represents the results of data collection processing for a specific US Army Corps of Engineers project. It is not intended for use in any other project. The user is responsible for the accuracy, completeness, and reliability of the data. The user is responsible for the results of any analysis or application of the data for other than its intended purpose.

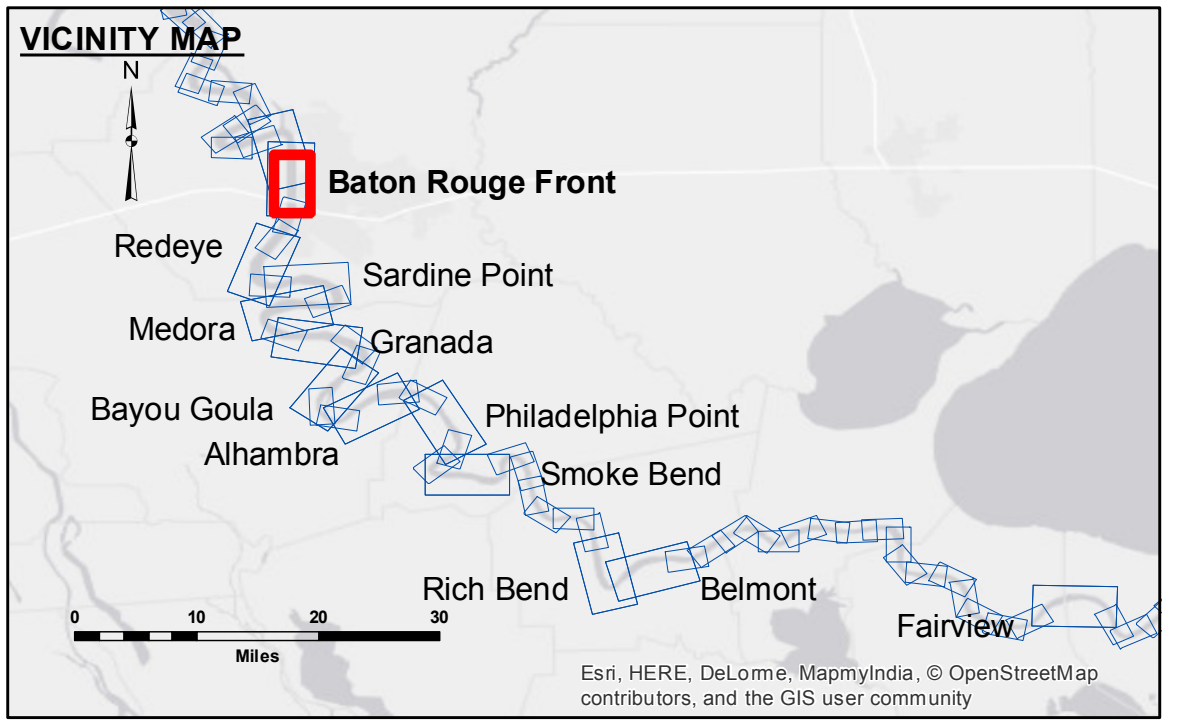
**Data Containment:** Hydrographic survey data is subject to change rapidly due to several factors including but not limited to dredging, sedimentation, and changes in bathymetry. The US Army Corps of Engineers does not warrant the accuracy of the data for any specific application. The user is responsible for the results of any analysis or application of the data for other than its intended purpose.

**Information Depicted on this map represents the results of a survey conducted on the date of the survey. It is not intended to represent the general condition existing at that time.**

Submitted:	Checked By:
Recommended:	AC
Approved:	

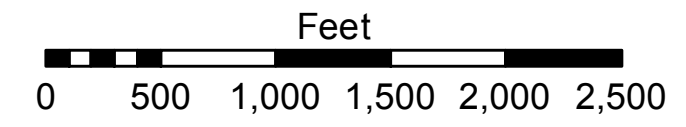
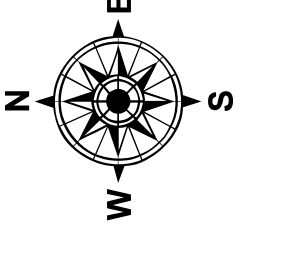
U.S. ARMY CORPS OF ENGINEERS  
NEW ORLEANS DISTRICT

**MISSISSIPPI RIVER - B.R. TO GULF  
BATON ROUGE FRONT RECON  
MR\_01\_BRF\_20160727  
27 July 2016**



**LEGEND**

--- Federal Navigation Channel	● Cable Area	□ Borrow Area	0' and above
— Federal Navigation Center Line	□ Placement Area	● Shoalest Sounding**	0' to -5'
— As-built Pipeline/Cable	□ Anchorage Area	★ Beacon, General	-5' to -10'
..... Unconfirmed Pipeline/Cable	✕ Obstruction Point	◆ Red Navigation Buoy	-10' to -20'
— Project Depth Contour	✈ Wrecks-Submerged	◆ Green Navigation Buoy	-20' to -30'
			-30' to -35'
			-35' to -40'
			-40' to -45'
			-45' and below



LWRP: 2.8  
 Gage Reading: BR:16.39 D:6.64 USED:16.7 NGVD  
 Sea Conditions: CALM  
 Vessel Name: M/V LAFORCHE  
 Survey Type: CONDITION  
 Sounding Frequency\*\*\*: HIGH

**NOTES:**

Horizontal Coordinate System:  
 North American Datum of 1983 (NAD83), projected to the State Plane Coordinate System (SPCS), Louisiana South Zone. Distance units in U.S. Survey Feet.

Vertical Datum:  
 Soundings are shown in feet and indicate depths below Low Water Reference Plane 2007 (NGVD).

Distances on the Mississippi River, above and below Head of Passes are shown at 1 mile intervals.

The location of navigation aids are based on and provided by the U.S. Coast Guard and USACE crew.

2010 Aerial Photography data source: NAIP, USDA-FSA-APFO Aerial Photography Field Office.

Reference is N.O.A. Navigation Chart No. 11370.

\*\* Shoalest Sounding per Quarter per Reach.

\*\*\* High frequency (200 kHz) survey data represents the first signal return at a sounding location and will include suspended solids, known as "fluff", if present. Low frequency (20 kHz) survey data normally penetrates through this "fluff" layer to depict elevations of consolidated bottom material. Low frequency accuracies may vary depending on channel conditions and fathometer settings.

**Sheet Reference Number  
1 of 97**