

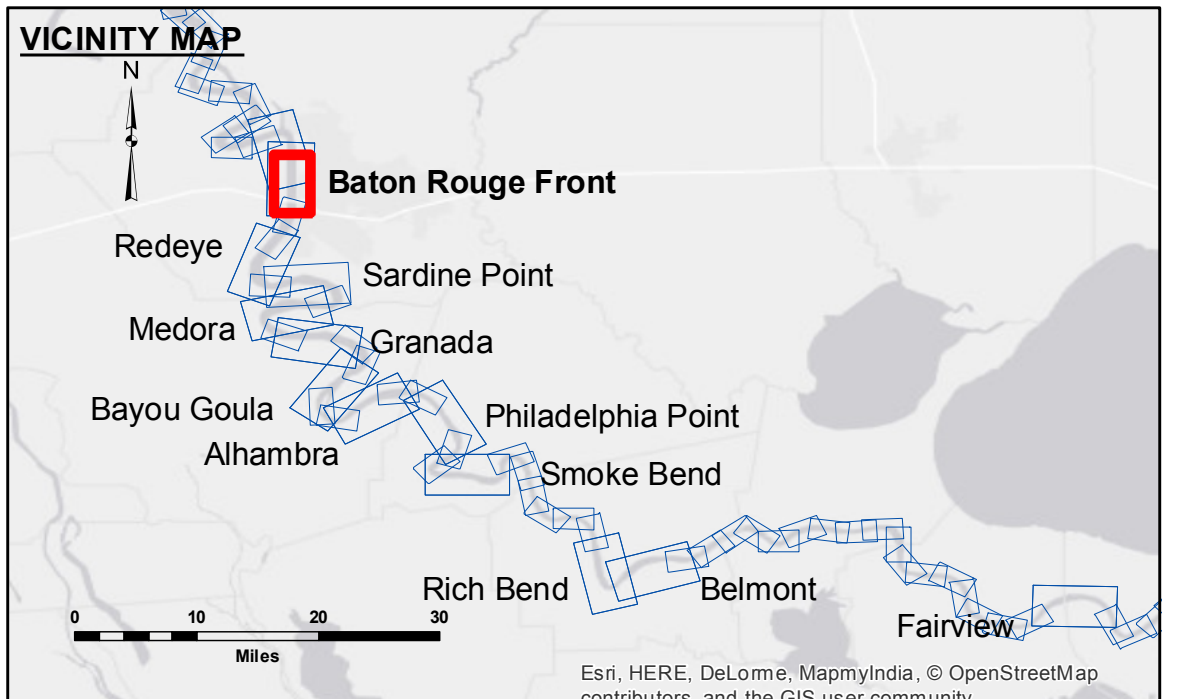
**US Army Corps of Engineers**  
District: CEMVN

**ACCESS NOTES:**  
Access to the map data is provided for informational purposes only. The data is not intended for use in navigation or other critical applications. The user is responsible for the results of any use of the data. The data is not intended for use in navigation or other critical applications. The user is responsible for the results of any use of the data.

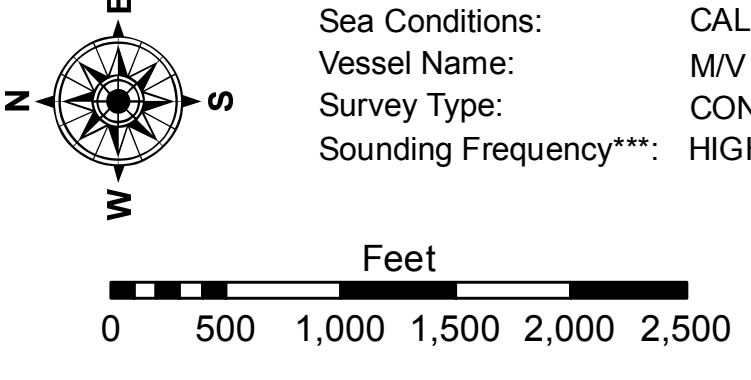
Submitted:	Checked By:
Recommended:	Checked By:
Approved:	Checked By:

U.S. ARMY CORPS OF ENGINEERS  
NEW ORLEANS DISTRICT

**MISSISSIPPI RIVER - B.R. TO GULF**  
**BATON ROUGE FRONT RECON**  
**MR\_01\_BRF\_20170112**  
**12 January 2017**



LEGEND		Depth Contours	
--- Federal Navigation Channel	○ Cable Area	Green	0' and above
— Federal Navigation Center Line	□ Placement Area	Yellow	0' to -5'
— As-built Pipeline/Cable	□ Anchorage Area	Orange	-5' to -10'
..... Unconfirmed Pipeline/Cable	⊗ Obstruction Point	Light Blue	-10' to -20'
— Project Depth Contour	⚓ Wrecks-Submerged	Blue	-20' to -30'
	★ Beacon, General	Dark Blue	-30' to -35'
	◆ Red Navigation Buoy	Light Purple	-35' to -40'
	◆ Green Navigation Buoy	Dark Purple	-40' to -45'
	□ Borrow Area	White	-45' and below
	● Shoalest Sounding**		



LWRP: 2.8  
Gage Reading: BR:20.2 D:12.5 USED:20.5 NGVD  
Sea Conditions: CALM  
Vessel Name: M/V LAFOURCHE  
Survey Type: CONDITION  
Sounding Frequency\*\*\*: HIGH

**NOTES:**  
Horizontal Coordinate System: North American Datum of 1983 (NAD83), projected to the State Plane Coordinate System (SPCS), Louisiana South Zone. Distance units in U.S. Survey Feet.  
Vertical Datum: Soundings are shown in feet and indicate depths below Low Water Reference Plane 2007 (NGVD).  
Distances on the Mississippi River, above and below Head of Passes are shown at 1 mile intervals.  
The location of navigation aids are based on and provided by the U.S. Coast Guard and USACE crew.  
2010 Aerial Photography data source: NAIP, USDA-FSA-APFO Aerial Photography Field Office.  
Reference is N.O.A. Navigation Chart No. 11370.  
\*\*\* Shoalest Sounding per Quarter per Reach.  
\*\*\* High frequency (200 kHz) survey data represents the first signal return at a sounding location and will include suspended solids, known as "fluff", if present. Low frequency (20 kHz) survey data normally penetrates through this "fluff" layer to depict elevations of consolidated bottom material. Low frequency accuracies may vary depending on channel conditions and fathometer settings.

**Sheet Reference Number**  
**1 of 97**