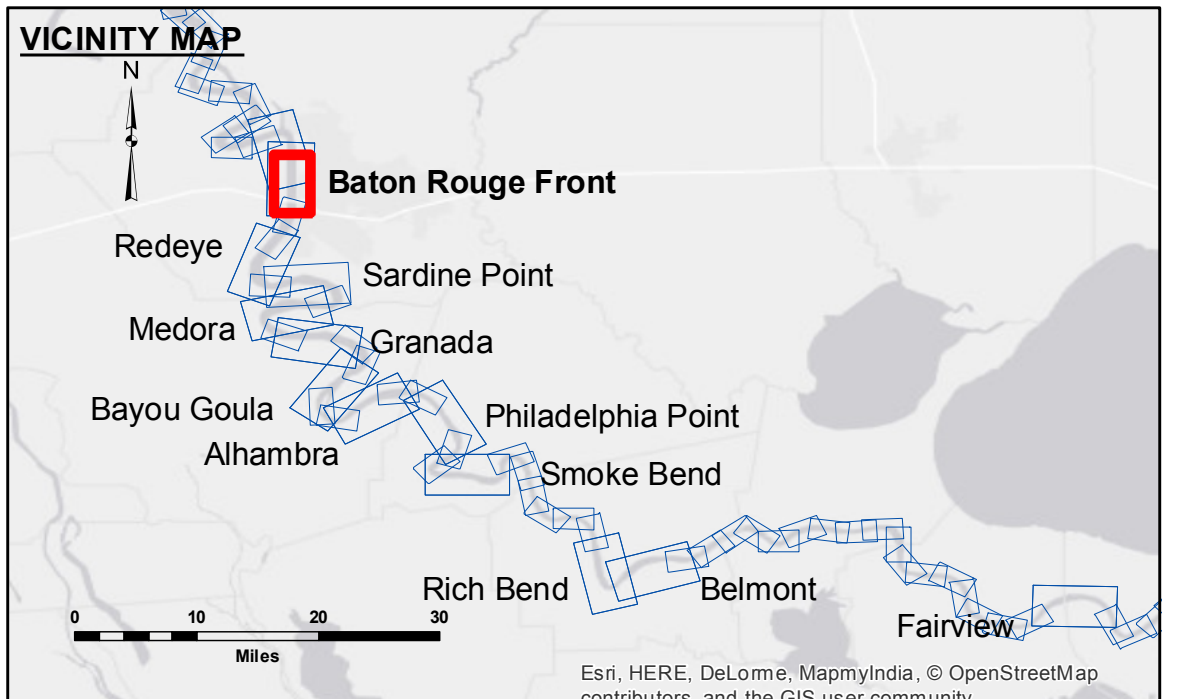


DISCLAIMER: The data represents the results of data collection processing for a specific US Army Corps of Engineers project. This data is not intended for general use and is only valid for its intended use. The user is responsible for the results. The user should verify the accuracy, completeness, reliability, usability, or suitability for any particular purpose of the data. The user should also verify the accuracy, completeness, reliability, usability, or suitability for any particular purpose of the data. The user should also verify the accuracy, completeness, reliability, usability, or suitability for any particular purpose of the data. The user should also verify the accuracy, completeness, reliability, usability, or suitability for any particular purpose of the data. The user should also verify the accuracy, completeness, reliability, usability, or suitability for any particular purpose of the data.

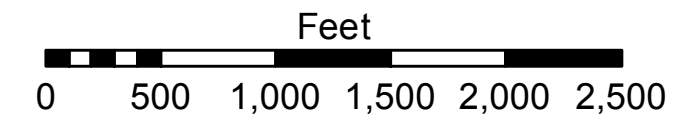
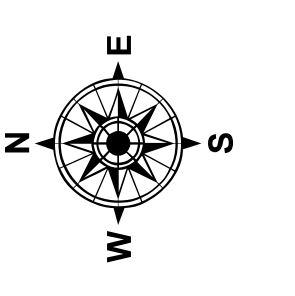
U.S. ARMY CORPERS OF ENGINEERS NEW ORLEANS DISTRICT	
Submitted:	Checked By: AC
Recommended:	Plotted By: AO
Approved:	DS, JA

**MISSISSIPPI RIVER - B.R. TO GULF
BATON ROUGE FRONT RECON
MR_01_BRF_20170711_CS
11 July 2017**



LEGEND

--- Federal Navigation Channel	○ Cable Area	□ Borrow Area	■ 0' and above
— Federal Navigation Center Line	□ Placement Area	● Shoalest Sounding**	■ 0' to -5'
— As-built Pipeline/Cable	□ Anchorage Area	★ Beacon, General	■ -5' to -10'
..... Unconfirmed Pipeline/Cable	⊗ Obstruction Point	◆ Red Navigation Buoy	■ -10' to -20'
— Project Depth Contour	✦ Wrecks-Submerged	◆ Green Navigation Buoy	■ -20' to -30'
			■ -30' to -35'
			■ -35' to -40'
			■ -40' to -45'
			■ -45' and below



LWRP: 2.8
Gage Reading: BR:25.0D;16.1 USED;25.4 NGVD
Sea Conditions: CALM
Vessel Name: BURWOOD
Survey Type: CONDITION
Sounding Frequency***: HIGH

NOTES:

Horizontal Coordinate System:
North American Datum of 1983 (NAD83), projected to the State Plane Coordinate System (SPCS), Louisiana South Zone. Distance units in U.S. Survey Feet.

Vertical Datum:
Soundings are shown in feet and indicate depths below Low Water Reference Plane 2007 (NGVD).

Distances on the Mississippi River, above and below Head of Passes are shown at 1 mile intervals.

The location of navigation aids are base on and provided by the U.S. Coast Guard and USACE crew.

2010 Aerial Photography data source: NAIP, USDA-FSA-APFO Aerial Photography Field Office.

Reference is N.O.A. Navigation Chart No. 11370.

*** Shoalest Sounding per Quarter per Reach.

*** High frequency (200 kHz) survey data represents the first signal return at a sounding location and will include suspended solids, known as "fluff", if present. Low frequency (20 kHz) survey data normally penetrates through this "fluff" layer to depict elevations of consolidated bottom material. Low frequency accuracies may vary depending on channel conditions and fathometer settings.

**Sheet
Reference
Number
1 of 97**

Revision Number:
3.13-20160811