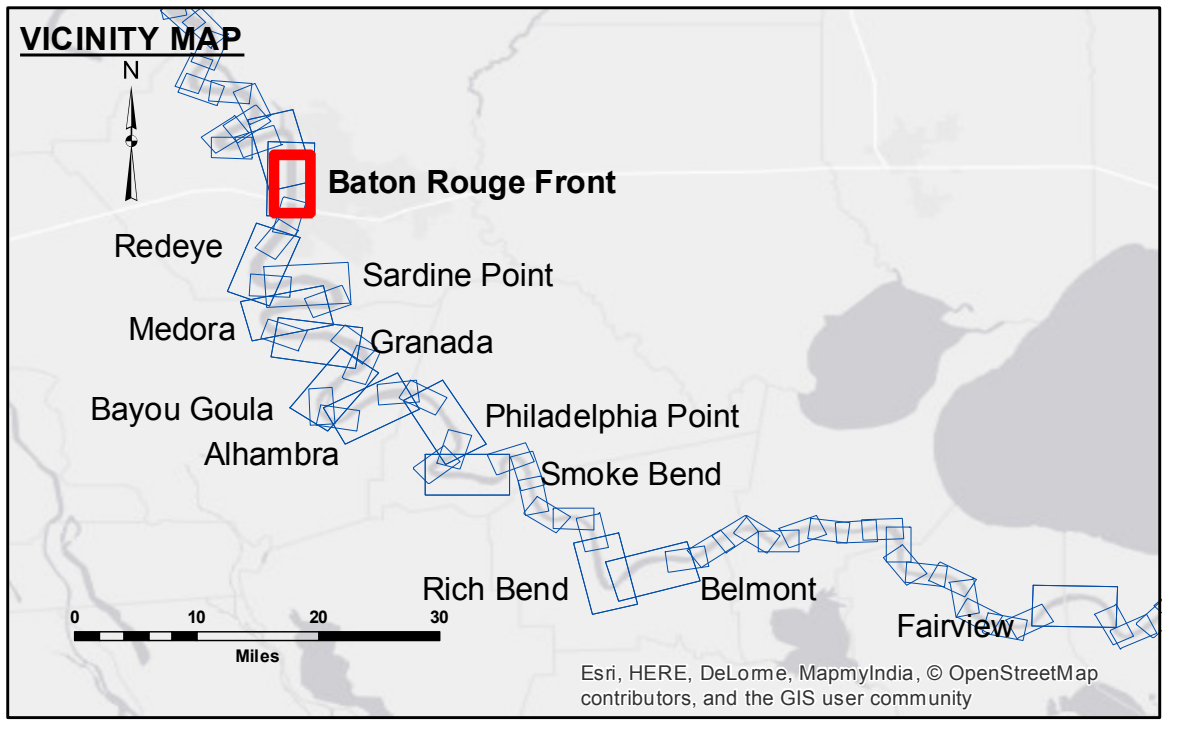


DISCLAIMER
The United States Government furnishes these data and the recipient accepts and uses them with the express understanding that the United States Government makes no warranty, expressed or implied, concerning the accuracy, completeness, reliability, usability or suitability for any particular purpose of the information furnished. The user is responsible for the results obtained from the use of the information. The application of the data for other than its intended purpose is prohibited.
Data Contained: Hydrographic survey data is subject to change rapidly due to several factors including but not limited to dredging, channel shifting, and other factors. The user is advised that the information is not intended for navigation purposes and should not be used for navigation purposes. The information depicted on this map represents the results of a survey conducted in accordance with the standards of the United States Army Corps of Engineers and should not be used for navigation purposes. The information depicted on this map represents the results of a survey conducted in accordance with the standards of the United States Army Corps of Engineers and should not be used for navigation purposes.

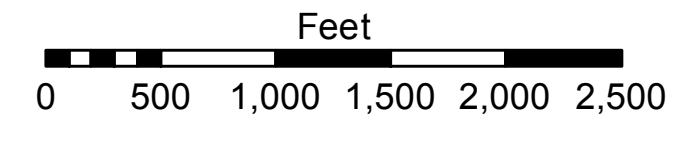
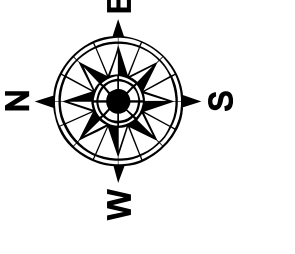
U.S. ARMY CORPS OF ENGINEERS NEW ORLEANS DISTRICT		
Submitted:	Surveyed By:	RYLAND/DADAMS
Recommended:	Plotted By:	AO
Approved:	Checked By:	AO

**MISSISSIPPI RIVER - B.R. TO GULF
BATON ROUGE FRONT RECON
MR_01_BRF_20170719_CS
19 July 2017**



LEGEND

--- Federal Navigation Channel	○ Cable Area	□ Borrow Area	0' and above
— Federal Navigation Center Line	□ Placement Area	● Shoalest Sounding**	0' to -5'
— As-built Pipeline/Cable	□ Anchorage Area	☆ Beacon, General	-5' to -10'
⋯ Unconfirmed Pipeline/Cable	⊗ Obstruction Point	◆ Red Navigation Buoy	-10' to -20'
— Project Depth Contour	⚓ Wrecks-Submerged	◆ Green Navigation Buoy	-20' to -30'
			-30' to -35'
			-35' to -40'
			-40' to -45'
			-45' and below



LWRP: 2.8
Gage Reading: BR:24.1D:15.6 USED:24.40 NGVD
Sea Conditions: CALM
Vessel Name: M/V BURRWOOD
Survey Type: CONDITION
Sounding Frequency***: HIGH

NOTES:
Horizontal Coordinate System:
North American Datum of 1983 (NAD83), projected to the State Plane Coordinate System (SPCS), Louisiana South Zone. Distance units in U.S. Survey Feet.
Vertical Datum:
Soundings are shown in feet and indicate depths below Low Water Reference Plane 2007 (NGVD).
Distances on the Mississippi River, above and below Head of Passes are shown at 1 mile intervals.
The location of navigation aids are base on and provided by the U.S. Coast Guard and USACE crew.
2010 Aerial Photography data source: NAIP, USDA-FSA-APFO Aerial Photography Field Office.
Reference is N.O.A. Navigation Chart No. 11370.
** Shoalest Sounding per Quarter per Reach.
*** High frequency (200 kHz) survey data represents the first signal return at a sounding location and will include suspended solids, known as "fluff", if present. Low frequency (20 kHz) survey data normally penetrates through this "fluff" layer to depict elevations of consolidated bottom material. Low frequency accuracies may vary depending on channel conditions and fathometer settings.

**Sheet Reference Number
1 of 97**

Revision Number:
3.13-20160811