

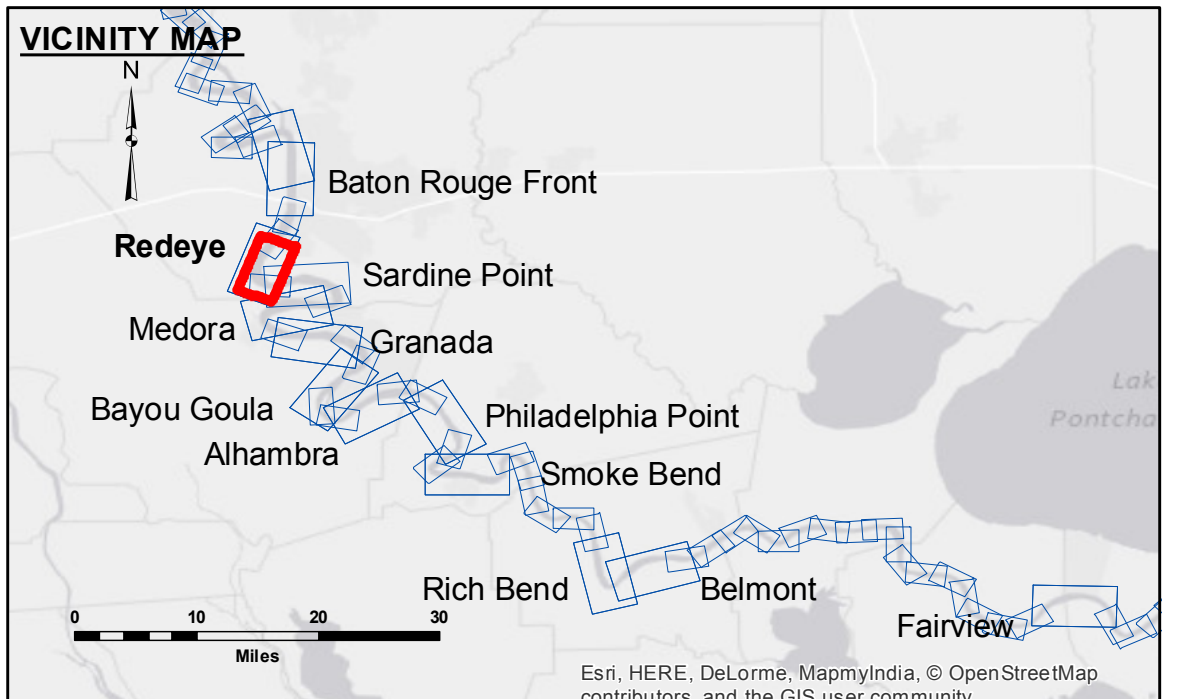
DISCLAIMER
 The information depicted on this map represents the results of a survey conducted by the U.S. Army Corps of Engineers. The user is responsible for the accuracy, reliability, usability, or suitability for any particular purpose of the information. The application of the data for other than its intended purpose is not warranted. The user is responsible for the accuracy, reliability, usability, or suitability for any particular purpose of the information. The application of the data for other than its intended purpose is not warranted. The user is responsible for the accuracy, reliability, usability, or suitability for any particular purpose of the information. The application of the data for other than its intended purpose is not warranted.

Submitted:	Surveyed By:	Checked By:
Recommended:	Plotted By:	MSK
Approved:	Checked By:	

U.S. ARMY CORPS OF ENGINEERS
 NEW ORLEANS DISTRICT

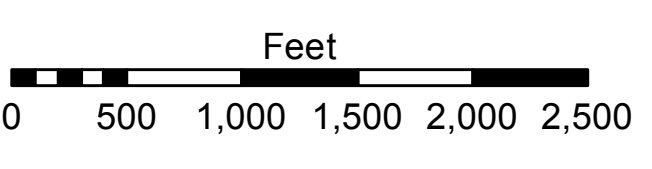
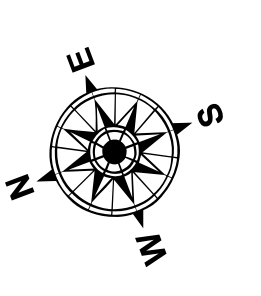
**MISSISSIPPI RIVER - B.R. TO GULF
 REDEYE CROSSING
 MR_04_RED_20150815
 15 August 2015**

**Sheet
 Reference
 Number
 4 of 97**



LEGEND

--- Federal Navigation Channel	○ Cable Area	□ Borrow Area	■ 0' and above
— Federal Navigation Center Line	▭ Placement Area	● Shoalest Sounding**	■ 0' to -5'
— As-built Pipeline/Cable	⊠ Anchorage Area	★ Beacon, General	■ -5' to -10'
⋯ Unconfirmed Pipeline/Cable	⊗ Obstruction Point	◆ Red Navigation Buoy	■ -10' to -20'
— Project Depth Contour	✎ Wrecks-Submerged	◆ Green Navigation Buoy	■ -20' to -30'
			■ -30' to -35'
			■ -35' to -40'
			■ -40' to 45'
			■ -45' and below



LWRP: 2.6
 Gage Reading: BR:29.77 D:20.42 USED:29.0 NGVD
 Sea Conditions: CALM
 Vessel Name: LAFOURCHE
 Survey Type: CONDITION
 Sounding Frequency***: HIGH

NOTES:
 Horizontal Coordinate System:
 North American Datum of 1983 (NAD83), projected to the State Plane Coordinate System (SPCS), Louisiana South Zone. Distance units in U.S. Survey Feet.
 Vertical Datum:
 Soundings are shown in feet and indicate depths below Low Water Reference Plane 2007 (NGVD).
 Distances on the Mississippi River, above and below Head of Passes are shown at 1 mile intervals.
 The location of navigation aids are based on and provided by the U.S. Coast Guard and USACE crew.
 2010 Aerial Photography data source: NAIP, USDA-FSA-APFO Aerial Photography Field Office.
 Reference is N.O.A. Navigation Chart No. 11370.
 ** Shoalest Sounding per Quarter per Reach.
 *** High frequency (200 kHz) survey data represents the first signal return at a sounding location and will include suspended solids, known as "fluff", if present. Low frequency (20 kHz) survey data normally penetrates through this "fluff" layer to depict elevations of consolidated bottom material. Low frequency accuracies may vary depending on channel conditions and fathometer settings.