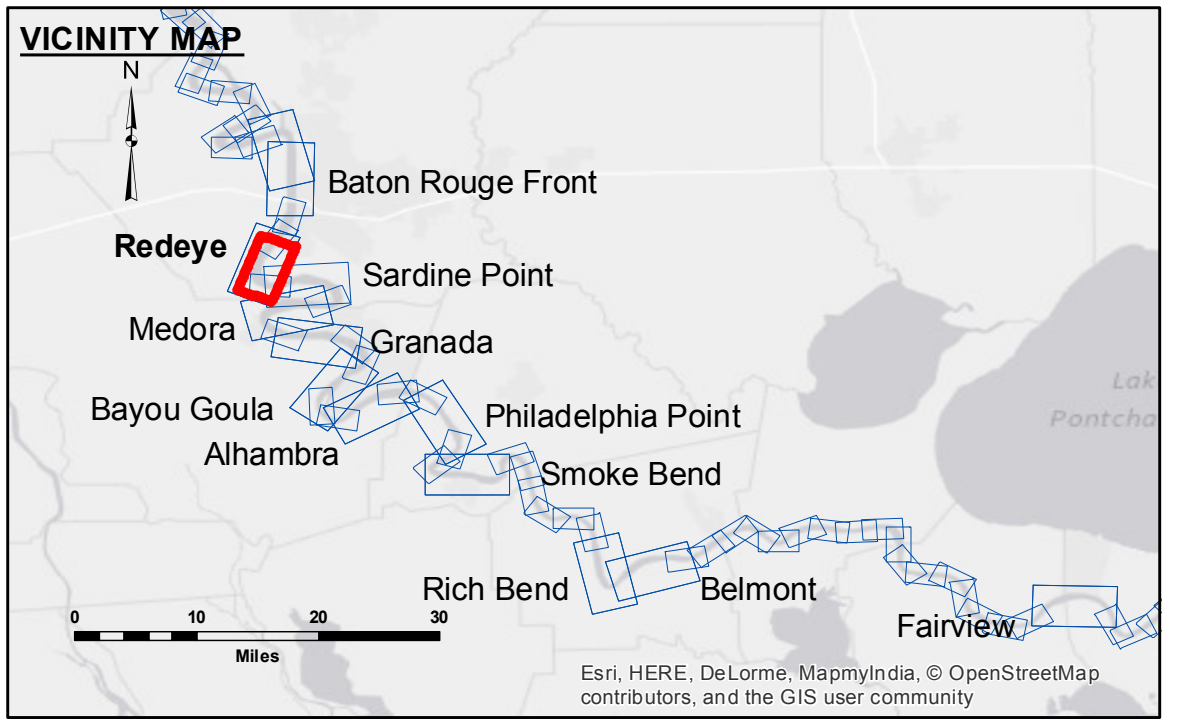


ACCESS NOTES
 The United States Government furnishes these data and the recipient accepts and uses them with the express understanding that the data are not to be used for any purpose other than that for which they were originally prepared. The user is responsible for the reliability, usability or suitability for any particular purpose of the data. The application of the data for other than its intended purpose is at the user's risk. The user is responsible for the accuracy, completeness, timeliness, and accuracy of the data. The user is responsible for the accuracy, completeness, timeliness, and accuracy of the data. The user is responsible for the accuracy, completeness, timeliness, and accuracy of the data. The user is responsible for the accuracy, completeness, timeliness, and accuracy of the data.

Submitted:	Checked By:
Recommended:	Checked By:
Approved:	Checked By:
U.S. ARMY CORPS OF ENGINEERS NEW ORLEANS DISTRICT	
Surveyed By:	Plotted By:
DR, JH	BTD
Checked By:	
MSK	



LEGEND	
--- Federal Navigation Channel	● Cable Area
— Federal Navigation Center Line	■ Placement Area
— As-built Pipeline/Cable	□ Anchorage Area
..... Unconfirmed Pipeline/Cable	⊗ Obstruction Point
— Project Depth Contour	✶ Wrecks-Submerged
□ Borrow Area	★ Beacon, General
● Shoalest Sounding**	◆ Red Navigation Buoy
★ Beacon, General	◆ Green Navigation Buoy

NOTES:

Horizontal Coordinate System:
 North American Datum of 1983 (NAD83), projected to the State Plane Coordinate System (SPCS), Louisiana South Zone. Distance units in U.S. Survey Feet.

Vertical Datum:
 Soundings are shown in feet and indicate depths below Low Water Reference Plane 2007 (NGVD).
 Distances on the Mississippi River, above and below Head of Passes are shown at 1 mile intervals.

The location of navigation aids are based on and provided by the U.S. Coast Guard and USACE crew.
 2010 Aerial Photography data source: NAIP, USDA-FSA-APFO Aerial Photography Field Office.

Reference is N.O.A.A. Navigation Chart No. 11370.
 ** Shoalest Sounding per Quarter per Reach.

*** High frequency (200 kHz) survey data represents the first signal return at a sounding location and will include suspended solids, known as "fluff", if present. Low frequency (20 kHz) survey data normally penetrates through this "fluff" layer to depict elevations of consolidated bottom material. Low frequency accuracies may vary depending on channel conditions and bathymeter settings.

LWRP: 2.6
 Gage Reading: BR:24.05 D:16.42 USED:23.40 NGVD
 Sea Conditions: CALM
 Vessel Name: M/V OB189
 Survey Type: CONDITION
 Sounding Frequency***: HIGH

Feet
 0 500 1,000 1,500 2,000 2,500

**MISSISSIPPI RIVER - B.R. TO GULF
 REDEYE CROSSING
 MR_04_RED_20151203
 03 December 2015**

**Sheet Reference Number
 4 of 97**