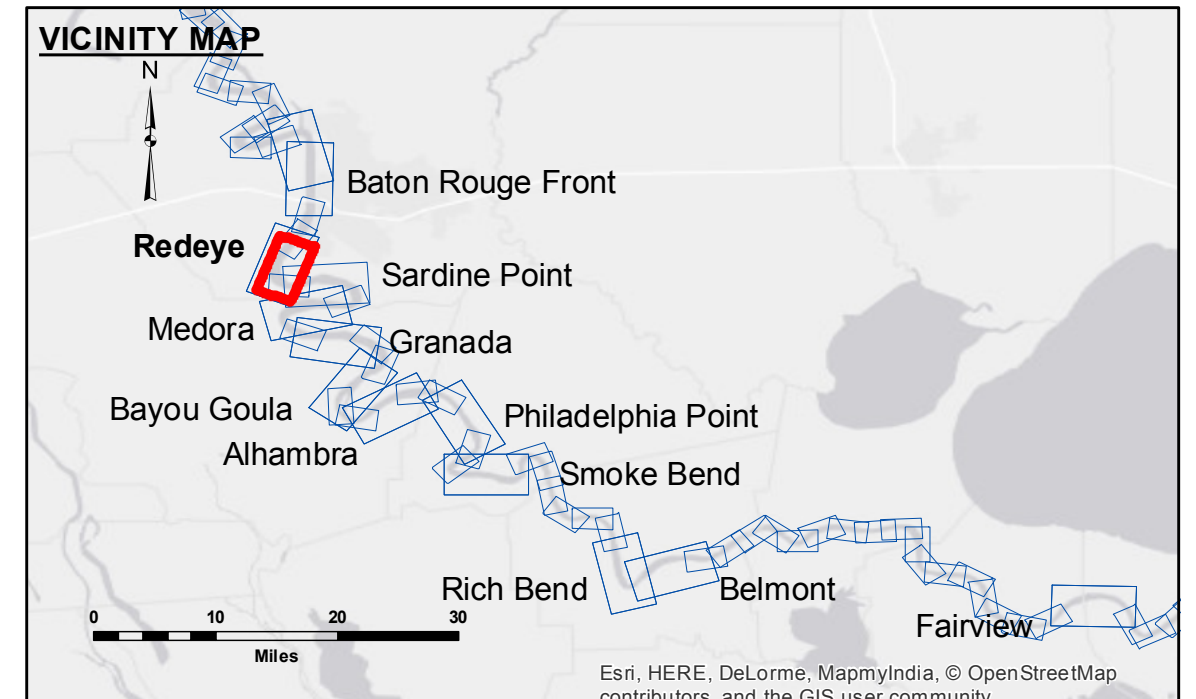


**DISCLAIMER**  
The information depicted on this map represents the results of a survey conducted by the U.S. Army Corps of Engineers. It is not to be used for any purpose other than that intended by the U.S. Army Corps of Engineers. The user assumes all liability for any use of this information. The U.S. Army Corps of Engineers is not responsible for any damages, including consequential, special, or exemplary damages, that result from the use of this information. The U.S. Army Corps of Engineers is not liable for any errors or omissions in this information. The U.S. Army Corps of Engineers is not liable for any use of this information for purposes other than those intended by the U.S. Army Corps of Engineers. The U.S. Army Corps of Engineers is not liable for any use of this information for purposes other than those intended by the U.S. Army Corps of Engineers. The U.S. Army Corps of Engineers is not liable for any use of this information for purposes other than those intended by the U.S. Army Corps of Engineers.

Submitted:	Surveyed By:	DS, JH
Recommended:	Plotted By:	BT, JD
Approved:	Checked By:	MSK

**MISSISSIPPI RIVER - B.R. TO GULF**  
**REDEYE CROSSING**  
**MR\_04\_RED\_20160321**  
**21 March 2016**



<ul style="list-style-type: none"> <li>--- Federal Navigation Channel</li> <li>— Federal Navigation Center Line</li> <li>— As-built Pipeline/Cable</li> <li>..... Unconfirmed Pipeline/Cable</li> <li>— Project Depth Contour</li> </ul>	<ul style="list-style-type: none"> <li>○ Cable Area</li> <li>□ Placement Area</li> <li>□ Anchorage Area</li> <li>⊗ Obstruction Point</li> <li>✈ Wrecks-Submerged</li> </ul>	<ul style="list-style-type: none"> <li>□ Borrow Area</li> <li>● Shoalest Sounding**</li> <li>☆ Beacon, General</li> <li>◆ Red Navigation Buoy</li> <li>◆ Green Navigation Buoy</li> </ul>	<ul style="list-style-type: none"> <li>0' and above</li> <li>0' to -5'</li> <li>-5' to -10'</li> <li>-10' to -20'</li> <li>-20' to -30'</li> <li>-30' to -35'</li> <li>-35' to -40'</li> <li>-40' to -45'</li> <li>-45' and below</li> </ul>
--	---	---	--

**LEGEND**

LWRP: 2.6  
Gage Reading: BR:38.4 D:27.98 USED:37.5 NGVD  
Sea Conditions: ROUGH  
Vessel Name: M/V 189  
Survey Type: CONDITION  
Sounding Frequency\*\*\*: HIGH

Feet  
0 500 1,000 1,500 2,000 2,500

**NOTES:**  
Horizontal Coordinate System:  
North American Datum of 1983 (NAD83), projected to the State Plane Coordinate System (SPCS), Louisiana South Zone. Distance units in U.S. Survey Feet.  
Vertical Datum:  
Soundings are shown in feet and indicate depths below Low Water Reference Plane 2007 (NGVD).  
Distances on the Mississippi River, above and below Head of Passes are shown at 1 mile intervals.  
The location of navigation aids are based on and provided by the U.S. Coast Guard and USACE crew.  
2010 Aerial Photography data source: NAIP, USDA-FSA-APFO Aerial Photography Field Office.  
Reference is N.O.A. Navigation Chart No. 11370.  
\*\* Shoalest Sounding per Quarter per Reach.  
\*\*\* High frequency (200 kHz) survey data represents the first signal return at a sounding location and will include suspended solids, known as "fluff", if present. Low frequency (20 kHz) survey data normally penetrates through this "fluff" layer to depict elevations of consolidated bottom material. Low frequency accuracies may vary depending on channel conditions and fathometer settings.

**Sheet Reference Number**  
**4 of 97**