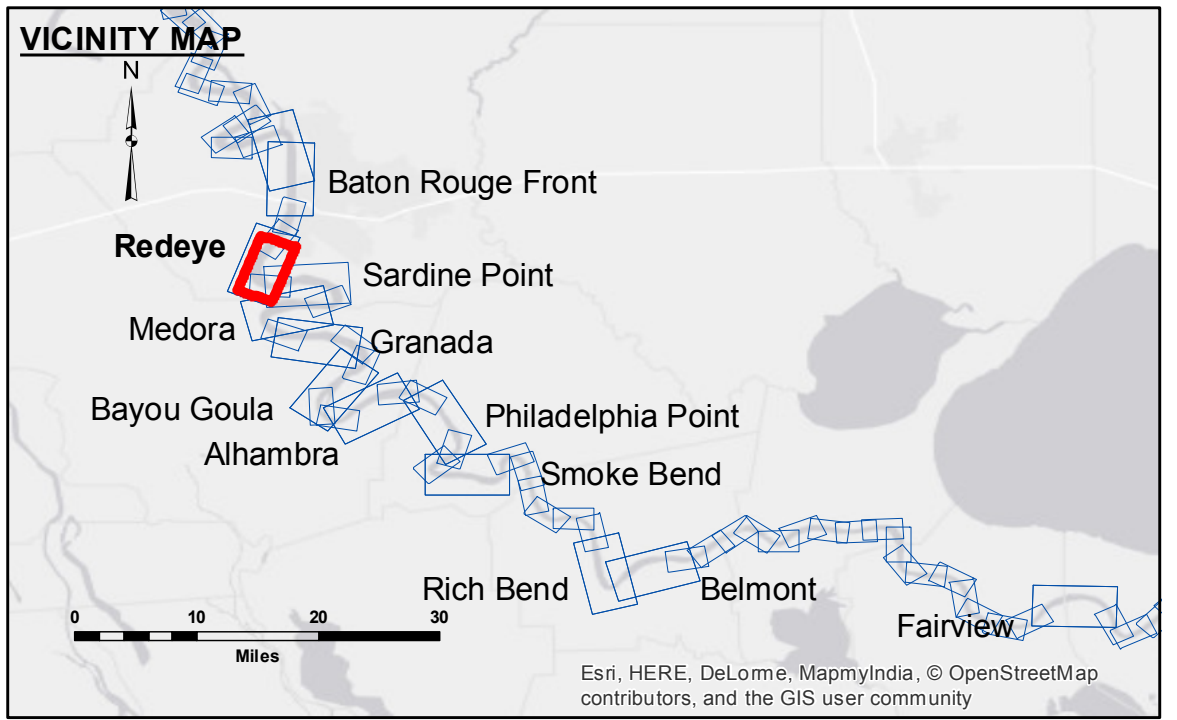


ACCESS NOTES
 These data and the recipient accepts and uses them with the express understanding that the data is provided for informational purposes only. The user is responsible for the accuracy, completeness, reliability, usability or suitability for any particular purpose of the data. The user shall not be held liable for any damages, claims, or expenses, or implied consequences, arising from the use of these data to others without obtaining the permission of the Army Corps of Engineers. The information depicted on this map represents the results of a survey conducted on the ground and is not intended to represent the general condition existing at that time.

Submitted:	Surveyed By: DS/JH
Recommended: Chief, Survey Section	Plotted By: BT/D
Approved: Chief, Waterways Maintenance Section	Checked By: AC

MISSISSIPPI RIVER - B.R. TO GULF REDEYE CROSSING
MR_04_RED_20160809
09 August 2016



LEGEND	
--- Federal Navigation Channel	0' and above
— Federal Navigation Center Line	0' to -5'
— As-built Pipeline/Cable	-5' to -10'
..... Unconfirmed Pipeline/Cable	-10' to -20'
— Project Depth Contour	-20' to -30'
○ Cable Area	-30' to -35'
□ Placement Area	-35' to -40'
□ Anchorage Area	-40' to -45'
⊗ Obstruction Point	-45' and below
★ Beacon, General	
◆ Red Navigation Buoy	
◆ Green Navigation Buoy	
□ Borrow Area	
● Shoalest Sounding**	
★ Wrecks-Submerged	

NOTES:

Horizontal Coordinate System:
 North American Datum of 1983 (NAD83), projected to the State Plane Coordinate System (SPCS), Louisiana South Zone. Distance units in U.S. Survey Feet.

Vertical Datum:
 Soundings are shown in feet and indicate depths below Low Water Reference Plane 2007 (NGVD). Distances on the Mississippi River, above and below Head of Passes are shown at 1 mile intervals.

The location of navigation aids are base on and provided by the U.S. Coast Guard and USACE crew.
 2010 Aerial Photography data source: NAIP, USDA-FSA-APFO Aerial Photography Field Office.

Reference is N.O.A. Navigation Chart No. 11370.

** Shoalest Sounding per Quarter per Reach.

*** High frequency (200 kHz) survey data represents the first signal return at a sounding location and will include suspended solids, known as "fluff", if present. Low frequency (20 kHz) survey data normally penetrates through this "fluff" layer to depict elevations of consolidated bottom material. Low frequency accuracies may vary depending on channel conditions and fathometer settings.

LWRP: 2.6
 Gage Reading: BR:16.79 D:9.82 USED:16.2 NGVD
 Sea Conditions: CALM
 Vessel Name: OB-189
 Survey Type: CONDITION
 Sounding Frequency***: HIGH

Sheet Reference Number
4 of 97