

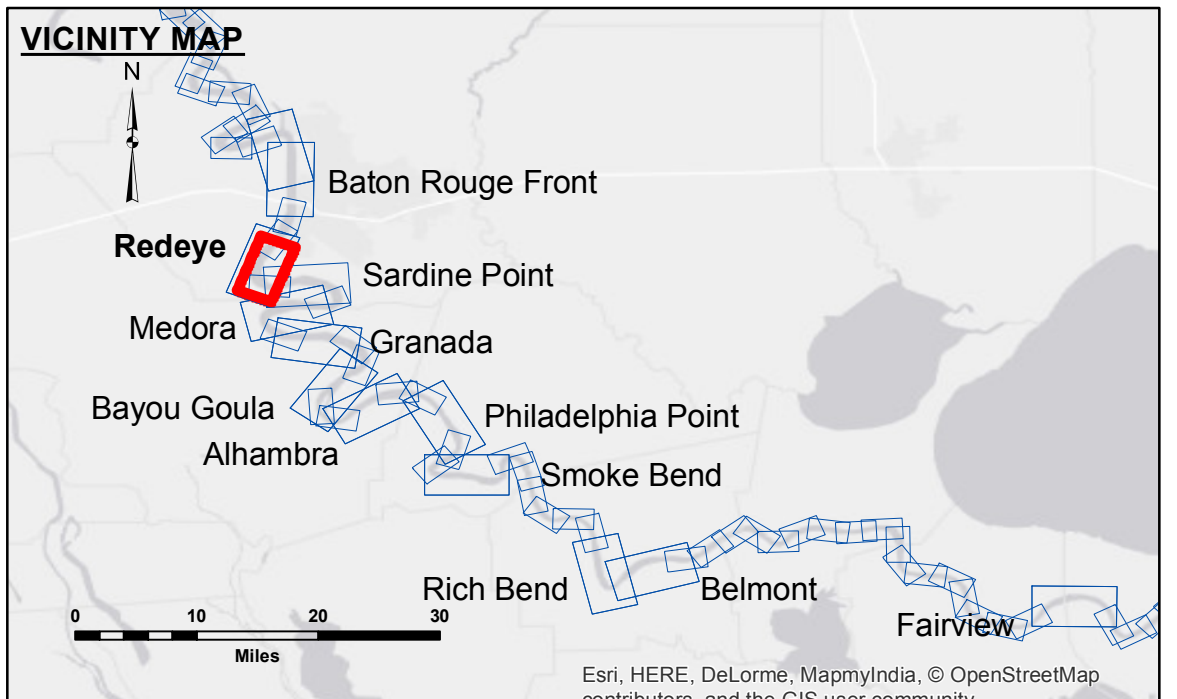
Access/Availability: The United States Government furnishes these data and the recipient accepts and uses them with the express understanding that they are not to be used for any purpose other than that for which they were prepared, or implied concerning the accuracy, completeness, readability, usability or suitability, for any particular purpose of the recipient. The user is responsible for the results of the application of the data for other than its intended purpose.

Data Constraints: Hydrographic survey data is subject to change rapidly due to several factors including but not limited to changing bathymetry, sedimentation, and other factors. The user is responsible for the accuracy of the data used in the design and construction of the project. The user is responsible for the accuracy of the data used in the design and construction of the project.

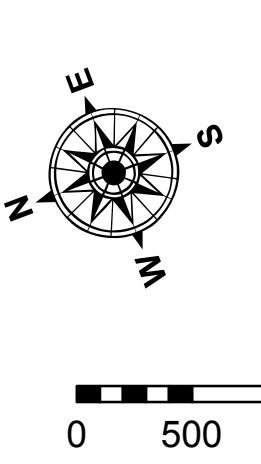
Disclaimer: The information depicted on this map represents the results of a survey conducted on the ground. The user is responsible for the accuracy of the data used in the design and construction of the project. The user is responsible for the accuracy of the data used in the design and construction of the project.

Submitted:	Surveyed By:	Plotted By:	Checked By:
Recommended:	DS/PS	BTD	AC
Approved:	Chief, Survey Section	Chief, Waterways Maintenance Section	

MISSISSIPPI RIVER - B.R. TO GULF
REDEYE CROSSING
MR_04_RED_20160824
24 August 2016



LEGEND		0' and above	
--- Federal Navigation Channel	● Cable Area	■ 0' to -5'	2.6 BR:19.1D:11.2 USED:18.5 NGVD CALM M/V LAFOURCHE CONDITION HIGH
— Federal Navigation Center Line	■ Placement Area	■ -5' to -10'	
— As-built Pipeline/Cable	□ Anchorage Area	■ -10' to -20'	
..... Unconfirmed Pipeline/Cable	⊗ Obstruction Point	■ -20' to -30'	
— Project Depth Contour	★ Beacon, General	■ -30' to -35'	
	◆ Red Navigation Buoy	■ -35' to -40'	
	◆ Green Navigation Buoy	■ -40' to 45'	
	◆ Wrecks-Submerged	■ -45' and below	
	□ Borrow Area		
	● Shoalest Sounding**		



NOTES:

Horizontal Coordinate System:
 North American Datum of 1983 (NAD83), projected to the State Plane Coordinate System (SPCS), Louisiana South Zone. Distance units in U.S. Survey Feet.

Vertical Datum:
 Soundings are shown in feet and indicate depths below Low Water Reference Plane 2007 (NGVD).

Distances on the Mississippi River, above and below Head of Passes are shown at 1 mile intervals.

The location of navigation aids are based on and provided by the U.S. Coast Guard and USACE crew.

2010 Aerial Photography data source: NAIP, USDA-FSA-APFO Aerial Photography Field Office.

Reference is N.O.A. Navigation Chart No. 11370.

** Shoalest Sounding per Quarter per Reach.

*** High frequency (200 kHz) survey data represents the first signal return at a sounding location and will include suspended solids, known as "fluff", if present. Low frequency (20 kHz) survey data normally penetrates through this "fluff" layer to depict elevations of consolidated bottom material. Low frequency accuracies may vary depending on channel conditions and bathymeter settings.

Sheet Reference Number
4 of 97