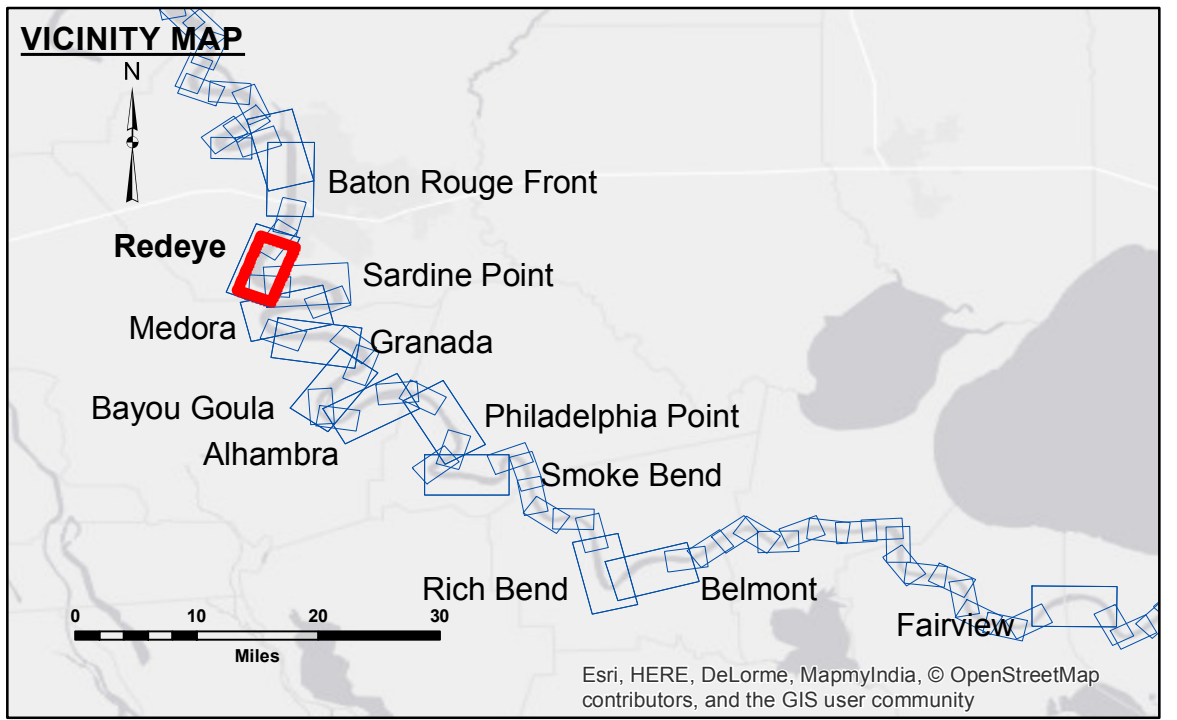


DIKE NO.	CONSTRUCTED DIKE ELEVATION
1	-5 NGVD
2	OR -7.6 LWRP
3	OR -7.6 LWRP
4	0 NGVD
5	OR -2.6 LWRP
6	OR -2.6 LWRP



LEGEND	
--- Federal Navigation Channel	● Cable Area
— Federal Navigation Center Line	■ Placement Area
— As-built Pipeline/Cable	□ Anchorage Area
..... Unconfirmed Pipeline/Cable	⊗ Obstruction Point
— Project Depth Contour	✈ Wrecks-Submerged
□ Borrow Area	★ Beacon, General
● Shoalest Sounding**	◆ Red Navigation Buoy
◆ Green Navigation Buoy	

LWRP: 2.6
Gage Reading: D:7.43 BR:13.13 USED:12.7 NGVD
Sea Conditions: CALM
Vessel Name: M/V BURROWOOD
Survey Type: CONDITION
Sounding Frequency*:** HIGH

NOTES:

Horizontal Coordinate System:
North American Datum of 1983 (NAD83), projected to the State Plane Coordinate System (SPCS), Louisiana South Zone. Distance units in U.S. Survey Feet.

Vertical Datum:
Soundings are shown in feet and indicate depths below Low Water Reference Plane 2007 (NGVD).

Distances on the Mississippi River, above and below Head of Passes are shown at 1 mile intervals.

The location of navigation aids are base on and provided by the U.S. Coast Guard and USACE crew.

2010 Aerial Photography data source: NAIP, USDA-FSA-APFO Aerial Photography Field Office.

Reference is N.O.A. Navigation Chart No. 11370.

** Shoalest Sounding per Quarter per Reach.

*** High frequency (200 kHz) survey data represents the first signal return at a sounding location and will include suspended solids, known as "fluff", if present. Low frequency (20 kHz) survey data normally penetrates through this "fluff" layer to depict elevations of consolidated bottom material. Low frequency accuracies may vary depending on channel conditions and bathymeter settings.



Access/Availability: The United States Government furnishes these data and the recipient accepts and uses them with the express understanding that they are not to be used for any purpose other than that for which they were prepared, or implied concerning the accuracy, completeness, readability, usability or suitability, for any particular purpose of the recipient. The user is responsible for the results of the application of the data for other than its intended purpose.

Data Constraints: Hydrographic survey data is subject to change rapidly due to several factors including but not limited to changing bathymetry, sedimentation, and other factors. The user is responsible for the results of the application of the data for other than its intended purpose.

Disclaimer: The information depicted on this map represents the results of a survey conducted on or about the date shown. It is not to be considered a representation of the general condition existing at that time.

Submitted:	Surveyed By:	Plotted By:	Checked By:
	JA, JH	BD	AC
Recommended:	Chief, Survey Section		
Approved:	Chief, Waterways Maintenance Section		

MISSISSIPPI RIVER - B.R. TO GULF
REDEYE CROSSING
MR_04_RED_20161215
15 December 2016

Sheet Reference Number
4 of 97