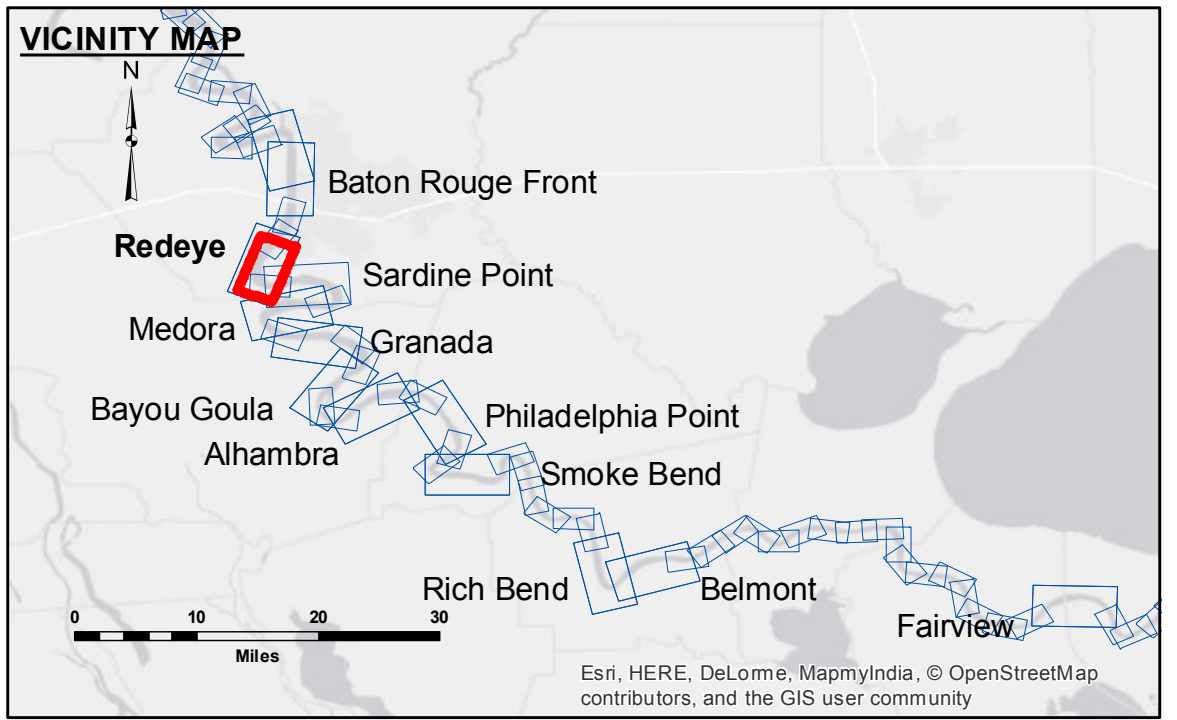


DIKE NO.	CONSTRUCTED DIKE ELEVATION
1	-5 NGVD
2	OR -7.6 LWRP
3	-5 NGVD
4	OR -2.6 LWRP
5	0 NGVD
6	OR -2.6 LWRP
	0 NGVD
	OR -2.6 LWRP
	0 NGVD
	OR -2.6 LWRP



LEGEND	
--- Federal Navigation Channel	● Cable Area
— Federal Navigation Center Line	■ Placement Area
— As-built Pipeline/Cable	□ Anchorage Area
..... Unconfirmed Pipeline/Cable	⊗ Obstruction Point
— Project Depth Contour	✈ Wrecks-Submerged
□ Borrow Area	★ Beacon, General
● Shoalest Sounding**	◆ Red Navigation Buoy
★ Beacon, General	◆ Green Navigation Buoy

LWRP: 2.6
Gage Reading: BR:27.5 D:18.5 USED:26.8 NGVD
Sea Conditions: CALM
Vessel Name: M/V LAFOURCHE
Survey Type: CONDITION
Sounding Frequency*:** HIGH

NOTES:

Horizontal Coordinate System:
 North American Datum of 1983 (NAD83), projected to the State Plane Coordinate System (SPCS), Louisiana South Zone. Distance units in U.S. Survey Feet.

Vertical Datum:
 Soundings are shown in feet and indicate depths below Low Water Reference Plane 2007 (NGVD).

Distances on the Mississippi River, above and below Head of Passes are shown at 1 mile intervals.

The location of navigation aids are base on and provided by the U.S. Coast Guard and USACE crew.

2010 Aerial Photography data source: NAIP, USDA-FSA-APFO Aerial Photography Field Office.

Reference is N.O.A. Navigation Chart No. 11370.

** Shoalest Sounding per Quarter per Reach.

*** High frequency (200 kHz) survey data represents the first signal return at a sounding location and will include suspended solids, known as "fluff", if present. Low frequency (20 kHz) survey data normally penetrates through this "fluff" layer to depict elevations of consolidated bottom material. Low frequency accuracies may vary depending on channel conditions and fathometer settings.



ACCESS NOTES

These data and the recipient accepts and uses them with the express understanding that the data is provided for informational purposes only and is not intended for use in any other manner. The user is responsible for the accuracy, reliability, usability or suitability for any particular purpose of the data. The user shall not be held liable for any damages, claims, or expenses, or any other consequences, arising from the use of this data. The user shall not be held liable for any damages, claims, or expenses, or any other consequences, arising from the use of this data. The user shall not be held liable for any damages, claims, or expenses, or any other consequences, arising from the use of this data.

Submitted:	Surveyed By:	DS/PS
Recommended:	Plotted By:	BD
Approved:	Checked By:	AC

U.S. ARMY CORPS OF ENGINEERS
 NEW ORLEANS DISTRICT

MISSISSIPPI RIVER - B.R. TO GULF
REDEYE CROSSING
MR_04_RED_20170131
31 January 2017

Sheet Reference Number
4 of 97