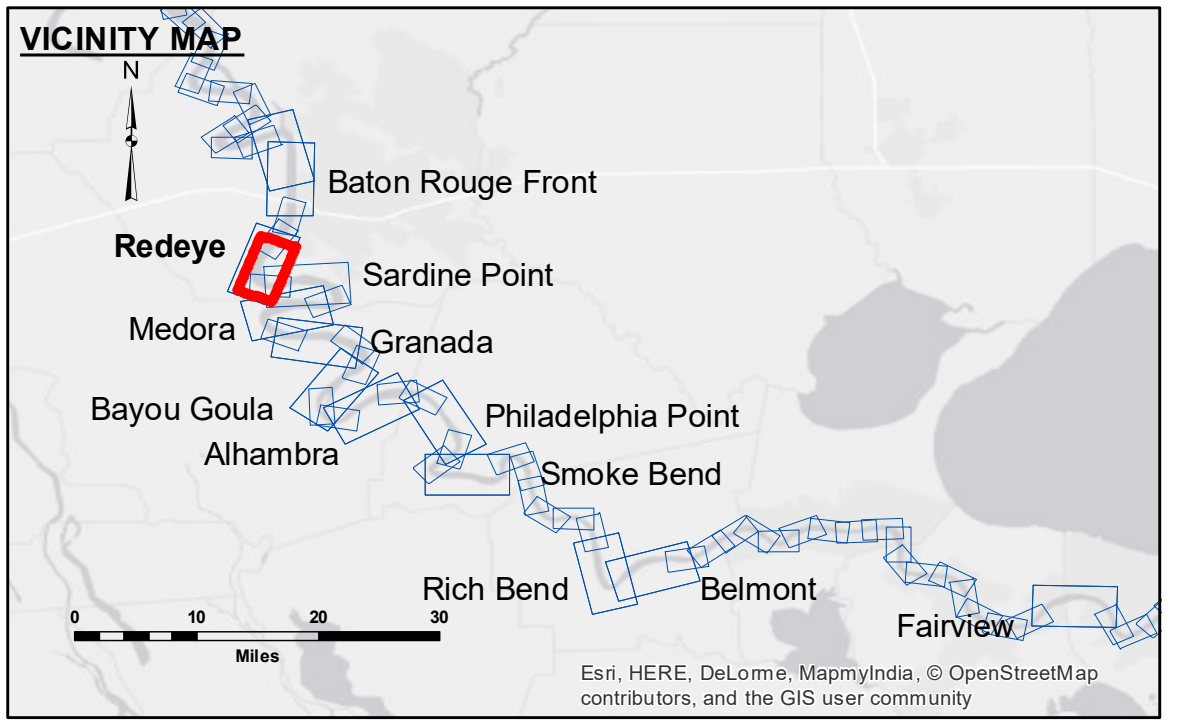


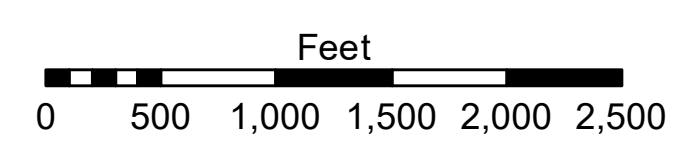
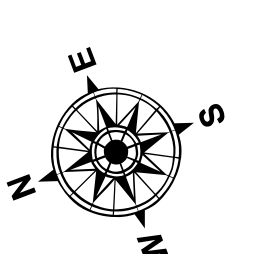
DISCLAIMER: The United States Government furnishes these data and the recipient accepts and uses them with the express understanding that the data are not to be used for any purpose other than that for which they were originally prepared. The user is responsible for the results of any use of the data for other than its intended purpose. The application of the data for other than its intended purpose may result in injury to persons or property. The user is responsible for the results of any use of the data for other than its intended purpose. The application of the data for other than its intended purpose may result in injury to persons or property. The user is responsible for the results of any use of the data for other than its intended purpose.

Submitted:	Surveyed By:	Plotted By:	Checked By:
Recommended:	DS/JA	BD	MS
Approved:	Chief Survey Section	Chief Survey Section	Chief Waterways Maintenance Section

**MISSISSIPPI RIVER - B.R. TO GULF
REDEYE CROSSING
MR_04_RED_20180104_CS
04 January 2018**



LEGEND		Borrow Area		Depth Contours	
--- Federal Navigation Channel	○ Cable Area	□ Borrow Area	■ 0' and above	■ 0' to -5'	■ 0' to -5'
— Federal Navigation Center Line	□ Placement Area	● Shoalest Sounding**	■ -5' to -10'	■ -5' to -10'	■ -5' to -10'
— As-built Pipeline/Cable	□ Anchorage Area	★ Beacon, General	■ -10' to -20'	■ -10' to -20'	■ -10' to -20'
..... Unconfirmed Pipeline/Cable	⊗ Obstruction Point	◆ Red Navigation Buoy	■ -20' to -30'	■ -20' to -30'	■ -20' to -30'
— Project Depth Contour	✈ Wrecks-Submerged	◆ Green Navigation Buoy	■ -30' to -35'	■ -30' to -35'	■ -30' to -35'
			■ -35' to -40'	■ -35' to -40'	■ -35' to -40'
			■ -40' to -45'	■ -40' to -45'	■ -40' to -45'
			■ -45' and below	■ -45' and below	■ -45' and below



LWRP: 2.6
Gage Reading: BR:17.02 D:9.82 USED:16.4 NGVD
Sea Conditions: CALM
Vessel Name: M/V LAFOURCHE
Survey Type: CONDITION
Sounding Frequency***: HIGH

NOTES:
Horizontal Coordinate System:
North American Datum of 1983 (NAD83), projected to the State Plane Coordinate System (SPCS), Louisiana South Zone. Distance units in U.S. Survey Feet.
Vertical Datum:
Soundings are shown in feet and indicate depths below Low Water Reference Plane 2007 (NGVD).
Distances on the Mississippi River, above and below Head of Passes are shown at 1 mile intervals.
The location of navigation aids are based on and provided by the U.S. Coast Guard and USACE crew.
2010 Aerial Photography data source: NAIP, USDA-FSA-APFO Aerial Photography Field Office.
Reference is N.O.A. Navigation Chart No. 11370.
** Shoalest Sounding per Quarter per Reach.
*** High frequency (200 kHz) survey data represents the first signal return at a sounding location and will include suspended solids, known as "fluff", if present. Low frequency (20 kHz) survey data normally penetrates through this "fluff" layer to depict elevations of consolidated bottom material. Low frequency accuracies may vary depending on channel conditions and fathometer settings.

**Sheet Reference Number
4 of 97**