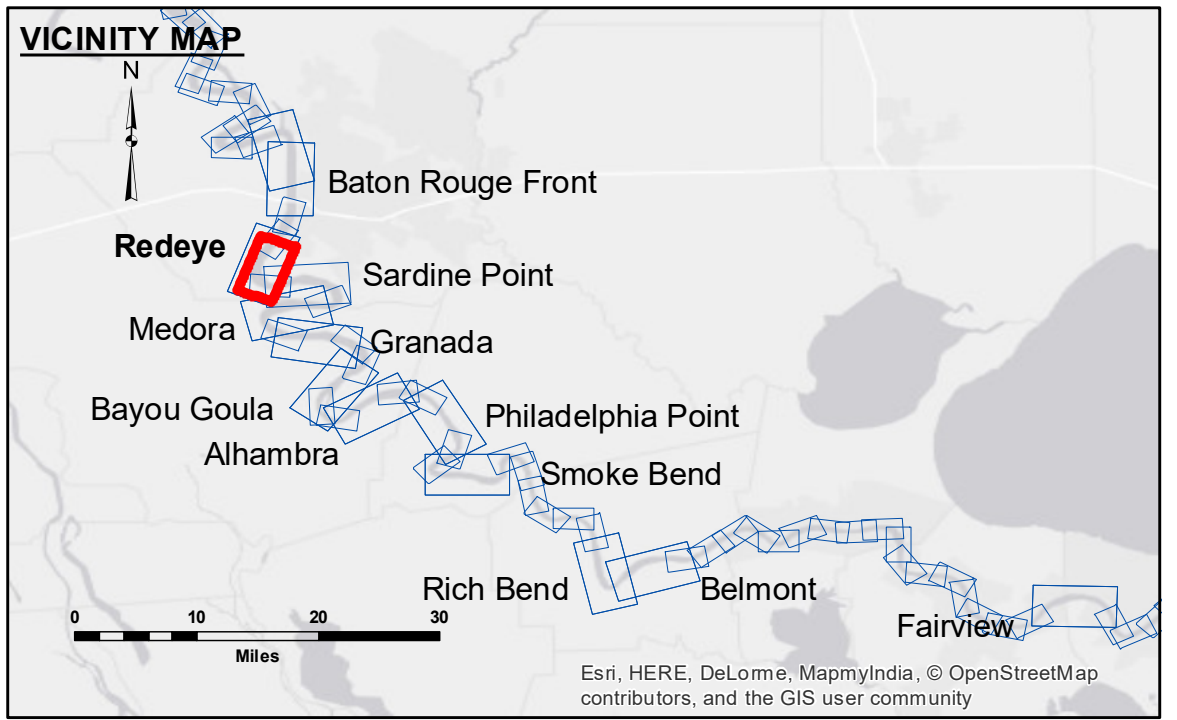


DISCLAIMER
The data represented on this map represents the results of a data collection project for a specific US Army Corps of Engineers project. The data is only valid for its intended use, control, time and accuracy specifications. The user is responsible for the results of the application of the data for other than its intended purpose.
Data Collection: Hydrographic survey data is subject to change rapidly due to several factors including but not limited to dredging, sedimentation, and channel migration. The user is responsible for the accuracy of the data and should not rely solely on this data for navigation purposes. The user should consult the latest hydrographic data available for the area of interest.
The information depicted on this map represents the results of a data collection project for a specific US Army Corps of Engineers project. The data is only valid for its intended use, control, time and accuracy specifications. The user is responsible for the results of the application of the data for other than its intended purpose.

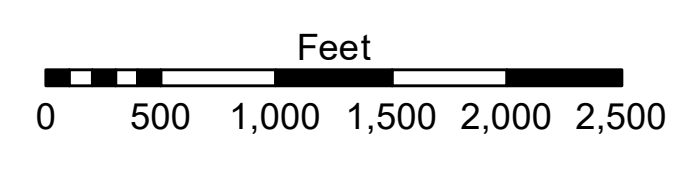
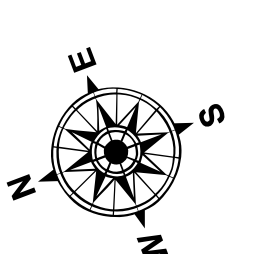
| | | |
|--------------|--------------|-------|
| Submitted: | Surveyed By: | DS/PS |
| Recommended: | Plotted By: | BD |
| Approved: | Checked By: | AC |

U.S. ARMY CORPS OF ENGINEERS
NEW ORLEANS DISTRICT

**MISSISSIPPI RIVER - B.R. TO GULF
REDEYE CROSSING
MR_04_RED_20180205_CS
05 February 2018**



| LEGEND | | Borrow Area | | Depth Contours | |
|----------------------------------|---------------------|-------------------------|------------------|------------------|------------------|
| --- Federal Navigation Channel | ● Cable Area | ■ Borrow Area | ■ 0' and above | ■ 0' to -5' | ■ 0' to -5' |
| — Federal Navigation Center Line | ■ Placement Area | ● Shoalest Sounding** | ■ -5' to -10' | ■ -5' to -10' | ■ -5' to -10' |
| — As-built Pipeline/Cable | ■ Anchorage Area | ★ Beacon, General | ■ -10' to -20' | ■ -10' to -20' | ■ -10' to -20' |
| Unconfirmed Pipeline/Cable | ⊗ Obstruction Point | ◆ Red Navigation Buoy | ■ -20' to -30' | ■ -20' to -30' | ■ -20' to -30' |
| — Project Depth Contour | ✈ Wrecks-Submerged | ◆ Green Navigation Buoy | ■ -30' to -35' | ■ -30' to -35' | ■ -30' to -35' |
| | | | ■ -35' to -40' | ■ -35' to -40' | ■ -35' to -40' |
| | | | ■ -40' to 45' | ■ -40' to 45' | ■ -40' to 45' |
| | | | ■ -45' and below | ■ -45' and below | ■ -45' and below |



LWRP: 2.6
Gage Reading: BR:15.72 D:8.73 USED:15.1 NGVD
Sea Conditions: CALM
Vessel Name: M/V LAFOURCHE
Survey Type: CONDITION
Sounding Frequency***: HIGH

NOTES:
Horizontal Coordinate System:
North American Datum of 1983 (NAD83), projected to the State Plane Coordinate System (SPCS), Louisiana South Zone. Distance units in U.S. Survey Feet.
Vertical Datum:
Soundings are shown in feet and indicate depths below Low Water Reference Plane 2007 (NGVD).
Distances on the Mississippi River, above and below Head of Passes are shown at 1 mile intervals.
The location of navigation aids are based on and provided by the U.S. Coast Guard and USACE crew.
2010 Aerial Photography data source: NAIP, USDA-FSA-APFO Aerial Photography Field Office.
Reference is N.O.A. Navigation Chart No. 11370.
** Shoalest Sounding per Quarter per Reach.
*** High frequency (200 kHz) survey data represents the first signal return at a sounding location and will include suspended solids, known as "fluff", if present. Low frequency (20 kHz) survey data normally penetrates through this "fluff" layer to depict elevations of consolidated bottom material. Low frequency accuracies may vary depending on channel conditions and fathometer settings.

**Sheet Reference Number
4 of 97**