

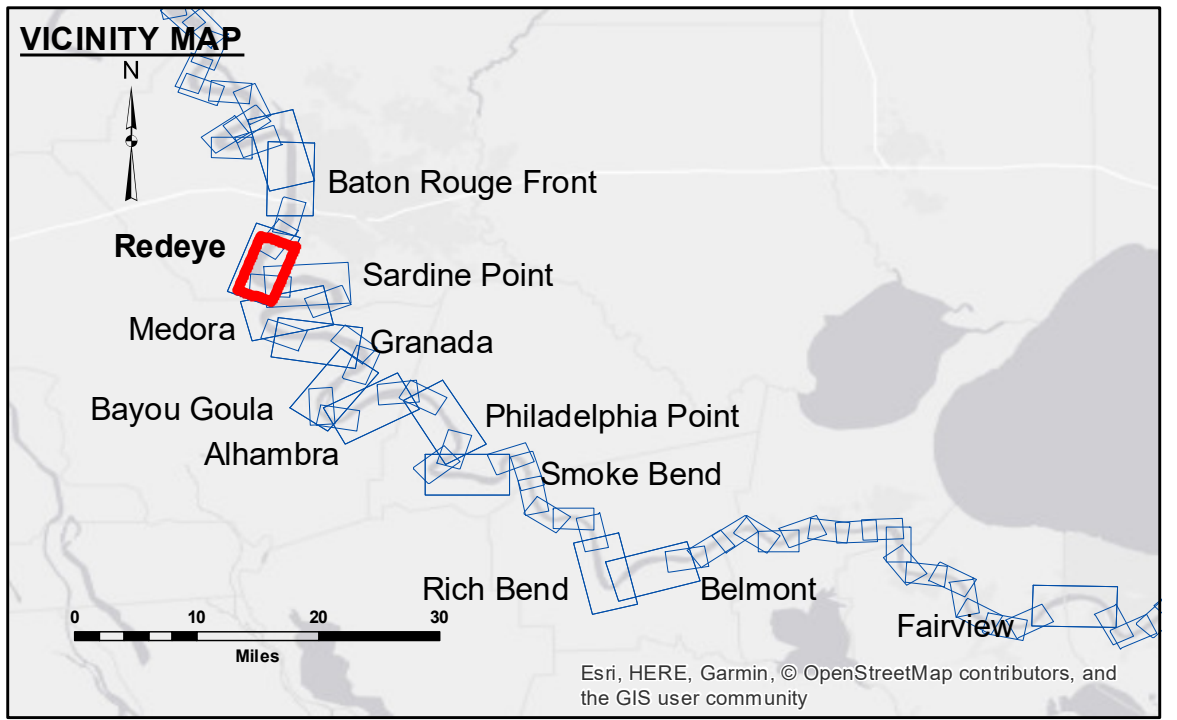
DIKE NO.	CONSTRUCTED DIKE ELEVATION
1	-5 NGVD
2	OR -7.6 LWRP
3	-5 NGVD
4	OR -2.6 LWRP
5	0 NGVD
6	OR -2.6 LWRP
	0 NGVD
	OR -2.6 LWRP
	0 NGVD
	OR -2.6 LWRP



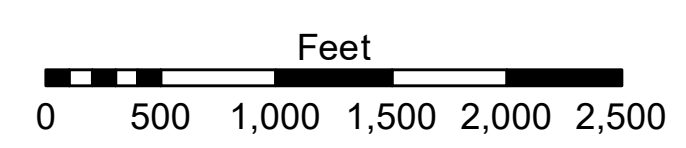
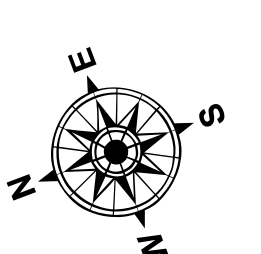
DISCLAIMER: The United States Government furnishes these data and the recipient accepts and uses them with the express understanding that the Government makes no warranty, expressed or implied, concerning the accuracy, completeness, reliability, usability or suitability for any particular purpose of the data. The user is responsible for the results of the application of the data for other than its intended purpose. The information depicted on this map represents the results of a survey conducted on or after the date of the data. The user is responsible for the results of the application of the data for other than its intended purpose. The information depicted on this map represents the results of a survey conducted on or after the date of the data. The user is responsible for the results of the application of the data for other than its intended purpose.

Submitted:	Surveyed By: DS/PS
Recommended: Chief Survey Section	Plotted By: AO
Approved: Chief Waterways Maintenance Section	Checked By: AO

**MISSISSIPPI RIVER - B. R. TO GULF
REDEYE CROSSING
MR_04_RED_20180925_AD
25 September 2018**



LEGEND	
--- Federal Navigation Channel	0' and above
— Federal Navigation Center Line	0' to -5'
— As-built Pipeline/Cable	-5' to -10'
..... Unconfirmed Pipeline/Cable	-10' to -20'
— Project Depth Contour	-20' to -30'
○ Cable Area	-30' to -35'
□ Placement Area	-35' to -40'
□ Anchorage Area	-40' to 45'
⊗ Obstruction Point	-45' and below
★ Beacon, General	
◆ Red Navigation Buoy	
◆ Green Navigation Buoy	
□ Borrow Area	
● Shoalest Sounding**	
★ Beacon, General	
◆ Red Navigation Buoy	
◆ Green Navigation Buoy	



LWRP: 2.6
 Gage Reading: BR:25.5D:16.2 USED:24.7 NGVD
 Sea Conditions: SMOOTH
 Vessel Name: LAFOURCHE
 Survey Type: CS
 Sounding Frequency***: HIGH

NOTES:
 Horizontal Coordinate System:
 North American Datum of 1983 (NAD83), projected to the State Plane Coordinate System (SPCS), Louisiana South Zone. Distance units in U.S. Survey Feet.
 Vertical Datum:
 Soundings are shown in feet and indicate depths below Low Water Reference Plane 2007 (NGVD).
 Distances on the Mississippi River, above and below Head of Passes are shown at 1 mile intervals.
 The location of navigation aids are base on and provided by the U.S. Coast Guard and USACE crew.
 2015 Aerial Photography data source: NAIP, USDA-FSA-APFO Aerial Photography Field Office.
 Reference is N.O.A. Navigation Chart No. 11370.
 ** Shoalest Sounding per Quarter per Reach.
 *** High frequency (200 kHz) survey data represents the first signal return at a sounding location and will include suspended solids, known as "fluff", if present. Low frequency (20 kHz) survey data normally penetrates through this "fluff" layer to depict elevations of consolidated bottom material. Low frequency accuracies may vary depending on channel conditions and fathometer settings.

**Sheet Reference Number
4 of 97**