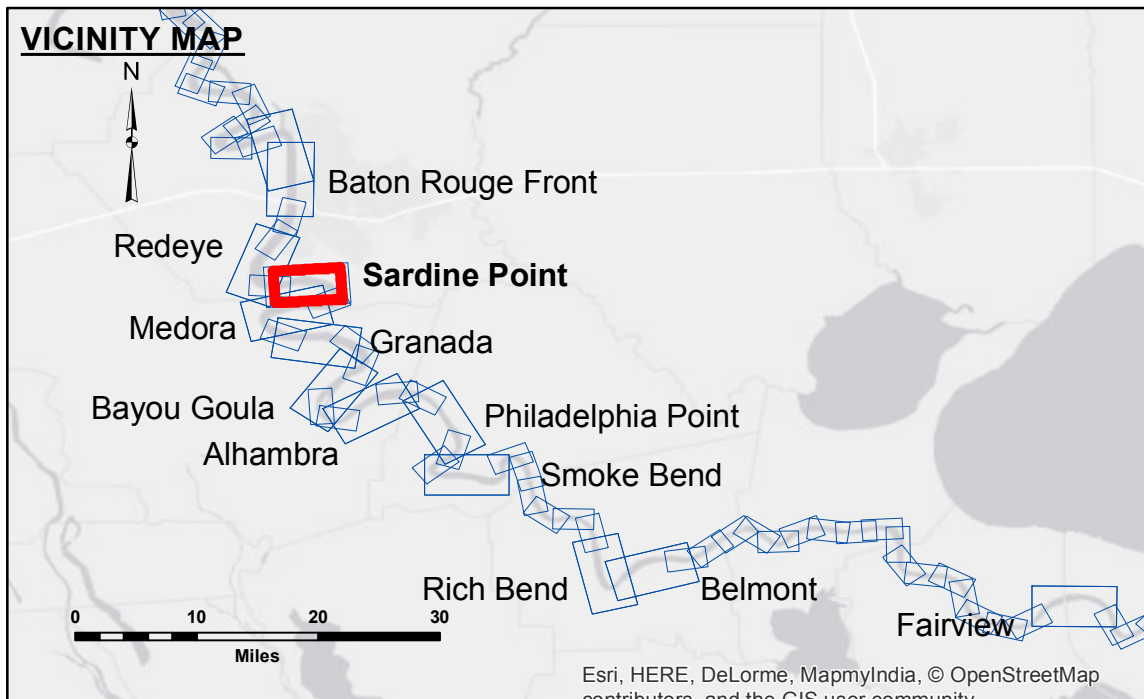


DISCLAIMER
 The United States Government furnishes these data and the recipient accepts and uses them with the express understanding that they are for informational purposes only. The data is not to be used for any purpose other than that for which it was prepared. The user is responsible for the accuracy, completeness, and reliability of the data for other than its intended purpose. The application of the data for other than its intended purpose is at the user's risk. The Corps of Engineers does not accept any liability for the use of the data for other than its intended purpose. The information depicted on this map represents the results of a survey conducted by the Corps of Engineers and is not to be used for any other purpose without the written consent of the District Engineer. The information depicted on this map represents the results of a survey conducted by the Corps of Engineers and is not to be used for any other purpose without the written consent of the District Engineer.

| | |
|--|---------------------|
| U.S. ARMY CORPS OF ENGINEERS NEW ORLEANS DISTRICT | |
| Submitted: | Surveyed By: JA, JH |
| Recommended: Chief, Survey Section | Plotted By: BD |
| Approved: Chief, Waterways Maintenance Section | Checked By: AC |

MISSISSIPPI RIVER - B.R. TO GULF
SARDINE POINT RECON
MR_06_SDP_20161215
15 December 2016

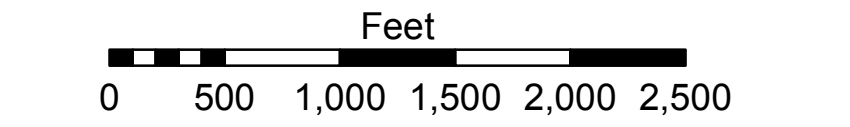


LEGEND

| | | | |
|----------------------------------|---------------------|-------------------------|----------------|
| - - - Federal Navigation Channel | ○ Cable Area | □ Borrow Area | 0' and above |
| — Federal Navigation Center Line | ■ Placement Area | ● Shoalest Sounding** | 0' to -5' |
| — As-built Pipeline/Cable | □ Anchorage Area | ★ Beacon, General | -5' to -10' |
| ... Unconfirmed Pipeline/Cable | ⊗ Obstruction Point | ◆ Red Navigation Buoy | -10' to -20' |
| — Project Depth Contour | ✈ Wrecks-Submerged | ◆ Green Navigation Buoy | -20' to -30' |
| | | | -30' to -35' |
| | | | -35' to -40' |
| | | | -40' to -45' |
| | | | -45' and below |

NOTES:
 Horizontal Coordinate System:
 North American Datum of 1983 (NAD83), projected to the State Plane Coordinate System (SPCS), Louisiana South Zone. Distance units in U.S. Survey Feet.
 Vertical Datum:
 Soundings are shown in feet and indicate depths below Low Water Reference Plane 2007 (NGVD).
 Distances on the Mississippi River, above and below Head of Passes are shown at 1 mile intervals.
 The location of navigation aids are based on and provided by the U.S. Coast Guard and USACE crew.
 2010 Aerial Photography data source: NAIP, USDA-FSA-APFO Aerial Photography Field Office.
 Reference is N.O.A. Navigation Chart No. 11370.
 ** Shoalest Sounding per Quarter per Reach.
 *** High frequency (200 kHz) survey data represents the first signal return at a sounding location and will include suspended solids, known as "fluff", if present. Low frequency (20 kHz) survey data normally penetrates through this "fluff" layer to depict elevations of consolidated bottom material. Low frequency accuracies may vary depending on channel conditions and fathometer settings.

LWRP: 2.4
 Gage Reading: D:7.43 BR:13.13 USED:12.2 NGVD
 Sea Conditions: CALM
 Vessel Name: M/V BURWOOD
 Survey Type: CONDITION
 Sounding Frequency***: HIGH



Sheet Reference Number
6 of 97